



# Table of Contents

Welcome from the Co-Directors	2
MODR Administration	3
MODR Members	4
Member Highlights	6
MODR Trainee Committee	8
9 <sup>th</sup> Annual Symposium	9
MODR Seminar Series	10
Trainee Development Series	12
Research Funding	13
Research Impact	14
Publication Highlights	16
Papers and Publications	19



## MESSAGE FROM THE CO-DIRECTORS

---

Although the challenges of the global pandemic persisted in 2021, McMaster University's Centre for Metabolism, Obesity and Diabetes Research (MODR) maintained the momentum that has brought our group success since 2018. We balanced a hybrid approach to patient care, mentorship, and collaboration. We broke ground on the MODR Energy Lab, our physical footprint within McMaster University Medical Centre. This lab will host two state of the art metabolic chambers, as well as work spaces for our trainees and a comfortable place for our membership to gather.



Our assembly of Investigators welcomed Dr. Saman Sadeghi from the Department of Chemistry and Chemical Biology. MODR's ever evolving team of over 45 faculty members continues to mentor the next generation of researchers across the McMaster campus. This growth brings innovation, solidifies the multi-disciplinary nature of MODR and builds our collaborative ties across disciplines.

Our 9<sup>th</sup> annual MODR symposium, delivered again this year utilizing a virtual platform, incorporated both international and local expertise on the topic of "*Metabolic Imaging*". The reach and connections that are made from this virtual platform continues to strengthen us. Our bi-weekly seminar series continued to rise in attendance in 2021. Hosted by our MODR Trainee committee, the lineup included internationally renowned scientists and faculty & trainees from McMaster.



In this report we are delighted to present our collective advancements and highlight key contributions of our faculty and trainees! We are proud of the continued engagement and commitment of the MODR members to precipitate knowledge, translate across disciplines and develop future scientists focussed on metabolism, obesity, and diabetes research.

# MODR ADMINISTRATION

---



Nora Roberge  
Pediatrics  
Administrative Assistant  
[nroberge@mcmaster.ca](mailto:nroberge@mcmaster.ca)



Elizabeth Gunn, BKin, MSc  
Pediatrics  
Clinical Research Coordinator  
[gunne@mcmaster.ca](mailto:gunne@mcmaster.ca)



James Lally, PhD  
Medicine  
Pre-Clinical Research Coordinator  
[lallyjs@mcmaster.ca](mailto:lallyjs@mcmaster.ca)



# MODR MEMBERS

---

**Sonia Anand, MD, PhD**

Professor  
Medicine, Cardiology  
Health Research Methods,  
Evidence, and Impact

**Laura Anderson, PhD**

Assistant Professor  
Health Research Methods,  
Evidence, and Impact

**Richard Austin, PhD**

Professor,  
Medicine, Nephrology

**Karen Bailey, MD, FRCSC,  
FACS**

Associate Professor  
Surgery, Pediatrics

**Ereny Bassilious, MD, FRCPC,  
FAAP**

Associate Professor  
Pediatrics, Endocrinology

**Russell Brown, MD, FRCPC**

Assistant Professor  
Anesthesia

**Rahul Chanchlani**

Assistant Professor  
Pediatrics, Nephrology

**Tony Chetty, MD, FRCPC**

Associate Professor  
Pathology & Molecular Medicine,  
Anatomical Pathology

**Russell De Souza**

Associate Professor  
Health Research Methods,  
Evidence, and Impact

**Aristithes Gerard Doumouras,  
MD, MPH, FRCSC**

Assistant Professor  
Surgery, General Surgery

**Hertzel Gerstein, MD, MSc,  
FRCPC**

Professor  
Medicine, Endocrinology &  
Metabolism

**Martin Gibala, PhD**

Professor  
Kinesiology

**Thomas Hawke, PhD**

Professor, Pathology &  
Molecular Medicine, Anatomy

**Alison Holloway, PhD**

Professor  
Obstetrics & Gynecology,  
Reproductive Biology (Basic  
Science)

**Eileen Hutton, PhD**

Professor Emeritus  
Midwifery Education Program

**Waliul Khan, PhD, FRCPath  
(UK)**

Professor  
Pathology & Molecular Medicine,  
Clinical Pathology

**Joan Krepinsky, MSc, MD,  
FRCPC**

Professor  
Medicine, Nephrology

**Vladimir Ljubicic, PhD**

Associate Professor  
Kinesiology

**Andrew McArthur, PhD**

Associate Professor  
Biochemistry & Biomedical  
Sciences

**Sarah McDonald, MD, MSc,  
FRCSC**

Professor  
Obstetrics & Gynecology,  
Maternal Fetal Medicine

**Natalia McInnes, MD, MSc,  
FRCPC**

Associate Professor  
Medicine, Endocrinology &  
Metabolism

**Katherine Morrison, MD,  
FRCPC**

Professor  
Pediatrics, Endocrinology &  
Metabolism

**Michael Noseworthy, PhD**

Professor  
Electrical & Computer  
Engineering

**Joyce Obeid, PhD**

Assistant Professor  
Pediatrics

**Nikhil Pai, MD, FAAP, FRCPC**

Assistant Professor  
Pediatrics, Gastroenterology

# MODR MEMBERS

---

**Guillaume Pare, MD, MSc**

Associate Professor Pathology & Molecular Medicine  
Health Research Methods, Evidence, and Impact

**Stuart Phillips, PhD**

Professor  
Kinesiology

**Marie Pigeyre, MD, PhD**

Assistant Professor  
Medicine, Endocrinology & Metabolism

**Marco Puglia, MD, FRCPC**

Associate Professor  
Medicine, Gastroenterology

**Zubin Punthakee, MD, FRCPC, ABIM**

Associate Professor  
Medicine, Endocrinology & Metabolism

**Sandeep Raha, PhD**

Associate Professor  
Pediatrics

**Elyanne Ratcliffe, PhD**

Associate Professor  
Pediatrics, Gastroenterology

**Saman Sadeghi, PhD**

Associate Professor  
Chemistry & Chemical Biology

**Constantine Samaan, MD, MSc**

Associate Professor  
Pediatrics, Endocrinology & Metabolism

**Jonathan Schertzer, PhD**

Associate Professor  
Biochemistry & Biomedical Sciences

**Diana Sherifali, RN, PhD, CDE**

Associate Professor  
Nursing

**Deborah Sloboda, PhD**

Professor  
Biochemistry & Biomedical Sciences

**Jennifer Stearns, PhD**

Assistant Professor  
Medicine, Gastroenterology

**Gregory Steinberg, PhD**

Professor  
Medicine, Endocrinology & Metabolism

**Michael Surette, PhD**

Professor  
Medicine, Gastroenterology

**Mark Tarnopolsky, MD, PhD, FRCPC**

Professor  
Pediatrics, Neuromuscular & Neurometabolic Disease  
Medicine, Neurology

**Jean-Eric Tarride, PhD**

Professor  
Health Research Methods, Evidence, and Impact

**Brian Timmons, PhD**

Associate Professor  
Pediatrics

**Bernardo Trigatti, PhD**

Professor  
Biochemistry & Biomedical Sciences

**Theos Tsakiridis, MSc, PhD, MD, FRCPC**

Associate Professor  
Pathology and Molecular  
Medicine, Oncology

**Gita Wahi, MD, FRCPC**

Associate Professor  
Pediatrics, General Pediatrics

**Geoff Werstuck, PhD**

Professor  
Medicine, Hematology & Thromboembolism

# MEMBER HIGHLIGHTS

---

A collection of Brighter World news stories highlighting the MODR members

## **Stair climbing offers significant cardiovascular and muscular benefits for heart patients**

Stuart Phillips

A team of researchers studied heart patients to find that moderate or vigorous stair climbing routines provide significant cardiovascular and muscular benefits, making it a safe and feasible option for cardiac rehabilitation. Assigned an exercise protocol to follow for a few months, the cardiac patients saw improved cardiorespiratory fitness and muscular improvement. [FULL STORY](#)



## **AMR and coronavirus variants: These researchers spot new threats to global health**

Andrew McArthur

Andrew McArthur's lab is studying anti-microbial resistance (AMR) caused by the lack of response from bacteria, parasites, viruses or fungi to medicines. McArthur raises the concern of the threat that AMR will have on the human population after the COVID-19 pandemic. The data collected by his lab is used to help clinicians, physicians and public health officials make the best decisions. [FULL STORY](#)

## **Common pesticide may contribute to global obesity crisis**

Gregory Steinberg

Chlorpyrifos, a pesticide banned in Canada but used on imported produce, was discovered by Gregory Steinberg's team to slow down the burning of calories in brown adipose tissue of mice through a process known as diet induced thermogenesis, causing extra stored calories to promote obesity. Steinberg says chlorpyrifos would only need to inhibit use of brown fat by 40 calories a day to trigger an extra weight gain of 5lbs a year leading to obesity. [FULL STORY](#)



## **Analysis: Bullying, racism and being 'different': Why some families are opting for remote learning regardless of COVID-19**

Sandeep Raha

A team of multidisciplinary researchers interested in children's rights and education conducted parent, student, and teacher surveys to learn more about remote education at the elementary level. The responses revealed that some students found the lack of bullying, peer pressure and social anxiety a welcomed change. Others mentioned lack of social interaction, limited exercise and increased screen time contributing to a negative experience. The team highlights that these responses should be used to re-imagine what post-COVID schooling looks like. [FULL STORY](#)



## **McMaster scientists pinpoint key trigger of Crohn's disease**

Waliul Khan

Waliul Khan and his team identified serotonin as a potential trigger for flare-ups of Chron's disease. They show that serotonin increases inflammation of inflammation bowel diseases (IBD) acting to stop cell autophagy, ultimately changing gut bacteria producing more inflammatory cytokines and severe disease. The results were obtained by analyzing blood and biopsy samples from 18 Chron's disease patients. [FULL STORY](#)

## **Bacteria do not colonize the gut before birth, study shows**

Deborah Sloboda

Research led by scientists from McMaster University and Charité – Universitätsmedizin Berlin in Germany found that a person's gut microbiome develops during and after birth. This discovery was made by examining 20 prenatal stool samples during breech Cesarean delivery to avoid transmission of bacteria that occurs during vaginal birth. [FULL STORY](#)





# MODR TRAINEE COMMITTEE 2021

---



**Andrew Mikhail**  
Seminar Series  
Co-Chair  
PhD Candidate  
Ljubicic Lab



**Anita Singh**  
9th Annual Symposium  
Co-Chair  
MSc Candidate  
Schertzer Lab



**Darryl Chan**  
9th Annual Symposium  
Co-Chair  
MSc Candidate  
Schertzer Lab



**Erin Webb**  
Seminar Series  
Co-Chair  
PhD Candidate  
Ljubicic Lab



**Evelyn Tsakiridis**  
Seminar Series  
Co-Chair  
PhD Candidate  
Steinberg Lab



**Marisa Morrow**  
Seminar Series  
Co-Chair  
PhD Candidate  
Steinberg Lab



**Olia Biziotis**  
Journal Club  
Organizer  
PhD Candidate  
Tsakiridis Lab



**Robert Gutgesell**  
Student Development  
Seminar Chair  
MSc Candidate  
Holloway Lab



**Yumna Makda**  
Seminar Series Co-Chair  
PhD Candidate – Austin Lab



# 9<sup>th</sup> ANNUAL SYMPOSIUM

McMaster's Centre for Metabolism, Obesity and Diabetes Research hosted a virtual symposium on October 22, 2021 titled *Metabolic Imaging*. This virtual half-day symposium welcomed 97 attendees. We were honored to host a panel of international scientists who shared advancements in preclinical and clinical metabolic imaging.

## Symposium Speakers

### **Christoph Thiele, University of Bonn**

The Dynamics of Fatty Acid Storage

### **Michael Czech, University of Massachusetts Medical School**

Imaging of Thermogenic Adipocytes in Pursuit of Cell Therapies

### **Basma Ahmed – Morrison and Steinberg Lab, McMaster University**

Assessment of Brown Adipose Tissue Activity Using MRI in Children and Adults

### **Marisa Morrow – PhD Candidate Steinberg Lab, McMaster University**

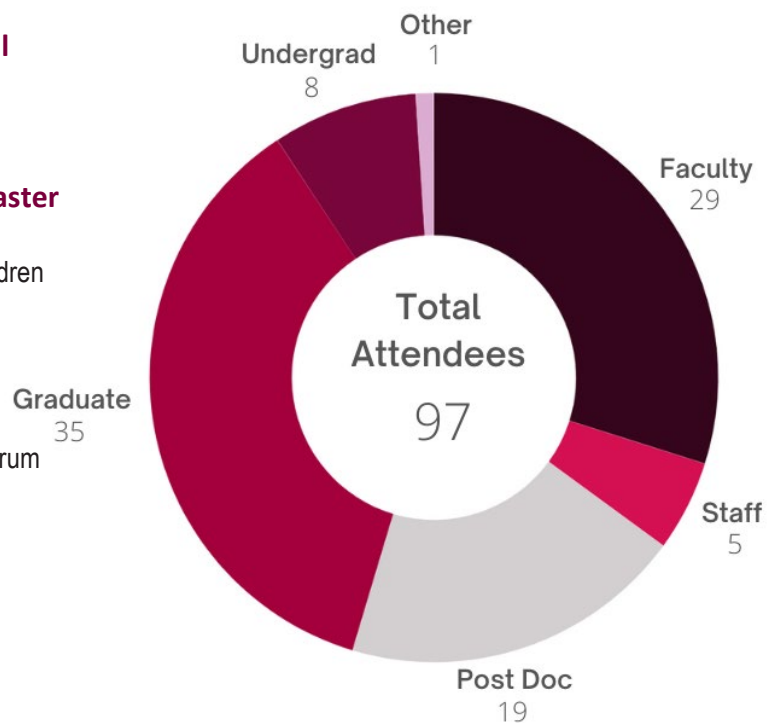
Inhibition of ATP-Citrate Lyase Reduces NASH, Fibrosis and Serum Triglycerides

### **Michael Noseworthy, McMaster University**

MRI Approaches for Assessing Skeletal Muscle Metabolism and Composition

### **Kitt Petersen, Yale School of Medicine**

Mitochondrial Metabolism in Health and Disease



# MODR SEMINAR SERIES

McMaster’s Centre for Metabolism, Obesity and Diabetes Research hosts a well-attended bi-weekly seminar series highlighting advancements in basic science and clinical research. 19 seminars were organized by the MODR trainee committee and hosted by graduate student co-chairs, Evelyn Tsakiridis, Marisa Morrow, Andrew Mikhail & Yumna Makda. This series featured graduate students from McMaster University as well as scientists from Universities in North America, South America and Europe in the field of metabolism, obesity, and diabetes research. These events are accredited by the Royal College of Physicians and Surgeons of Canada and adhere to their accreditation standards.

## 2021 Event Listings

### **Rick Austin - McMaster University**

All roads to good health and longevity lead to Quebec: Protective effects of the loss-of- function PCSK9-Q152H variant

### **Rana Gupta - UT Southwestern**

Multi-faceted roles for perivascular stromal cells in the regulation of adipose tissue remodeling

### **Matthew Hirschev - Duke University**

Data-driven hypothesis: a resource for biological discovery

### **Rachel Perry - Yale University**

Obesity and Cancer: Is there a role for new drugs or old tricks?

### **Phillip White - Duke University**

Defining the molecular networks linking branched-chain amino acids to metabolic disease

### **Jon Campbell - Duke University**

Expanding on the definition of the incretin axis

### **Efrah Yousuf, PhD Candidate, McMaster University**

Exploring the gut microbiota of preterm and full term infants

### **Devanjith Ganepola, MSc Candidate, McMaster University**

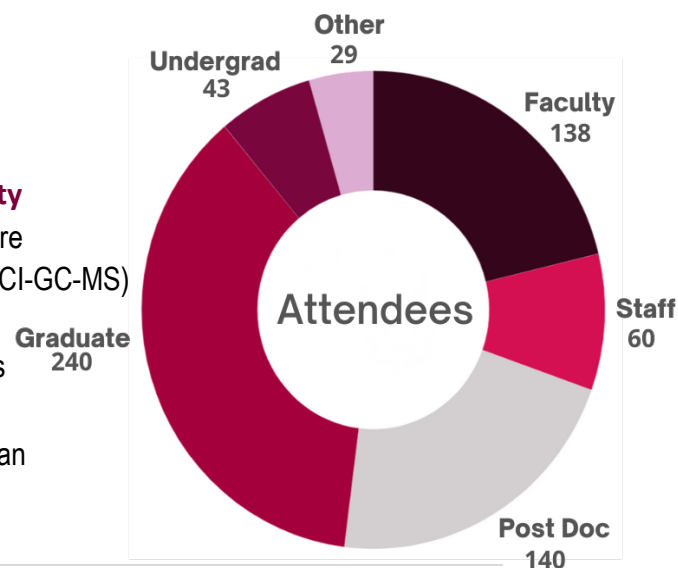
Quantification of urine organic acids through atmospheric pressure chemical ionization gas chromatography mass spectrometry (APCI-GC-MS)

### **Irfan Khan, MSc Candidate, McMaster University**

Individualizing BMI targets using genetics and clinical biomarkers

### **Anita Layton, University of Waterloo**

A multiscale computational model of metabolism in a virtual human



**Deborah Sloboda, McMaster University**

Bugs, babies and the early origins of disease risk

**Harmeet Gurm, MSc Candidate, McMaster University**

The implications of delta-9-THC on localized immune and hormonal responses mediated by trophoblasts of the human placenta

**Zarwa Saqib, PhD student, McMaster University**

The microbiota and immune-modulating effects of dietary fiber in gastrointestinal disorders

**Jeremy Walsh, McMaster University**

Using exercise to build better brains: in search of neurogenic triggers

**Jonathan Schertzer – McMaster University**

What flavour is your LPS? It might change blood glucose

**Logan Townsend – McMaster University**

Investigating the role of AMPK in regulating GDF15

**Sonia Rehal – McMaster University**

Lymphatic Dysfunction in Obesity: a role for iNOS

**Alexandre Caron - Université Laval**

Autonomic control of metabolism

**Kristen Nadeau – University of Colorado**

Cardiometabolic mechanisms and consequences of youth-onset type 1 and type 2 diabetes

**Jonathan McGavock – University of Manitoba**

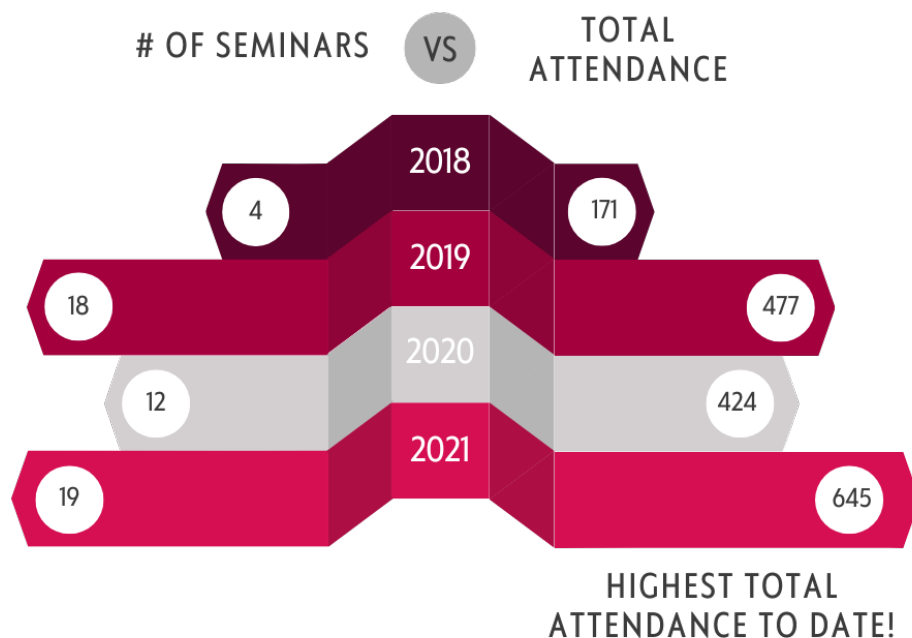
Prevention and treatment of type 2 diabetes in youth: Mechanisms and moral obligations

**Gabriel Anhé - University of Campinas**

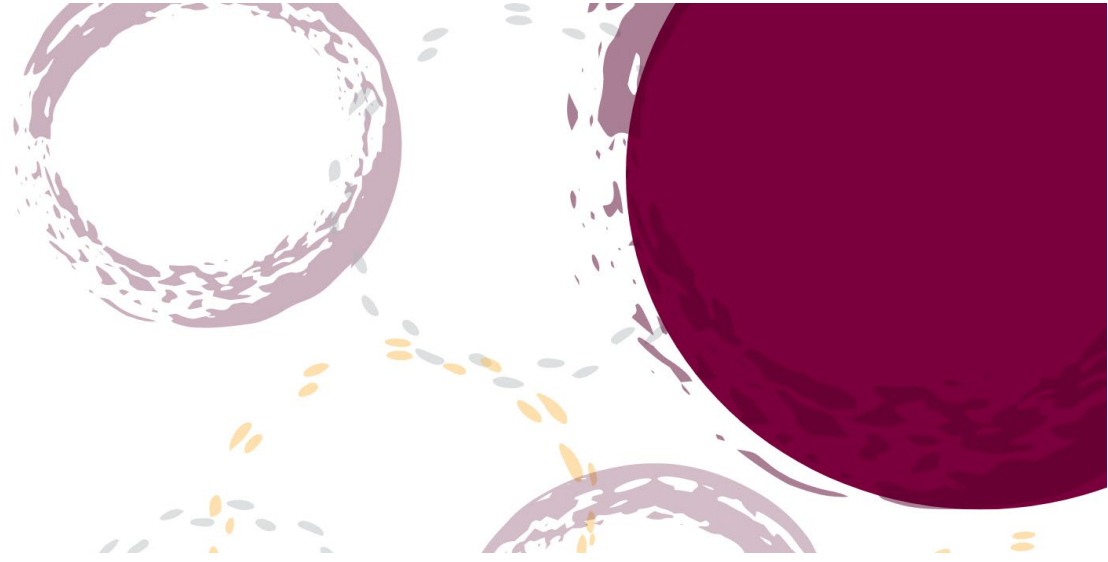
Hypercaloric diets exacerbate allergic asthma during different moments of life

**Rashmi Kothary – University of Ottawa**

Extraneuronal manifestations in Spinal Muscular Atrophy







## TRAINEE DEVELOPMENT SERIES

---

McMaster's Centre for Metabolism, Obesity and Diabetes Research continued the trainee development series in 2021 in a virtual capacity. This series was formed in 2020 to add enrichment to the trainees within our research Centre and the University. The series is organized by MODR trainees Eric Desjardins, Olia Biziotis and Robert Gutgesell. The series is comprised of journal clubs and seminars featuring guest speakers from all avenues of research to inspire and propel the next generation.

### **Taban Saifi, Medical Science Liaison, Novo Nordisk Canada Inc.**

Non-Academic Careers Q&A

### **Emma Griffiths- Simon Fraser University**

It's just semantics - or is it? How data science improves your health, gets you a job, and so much more

### **Journal Club – led by James McKendry**

The effect of short-term exercise prehabilitation on skeletal muscle protein synthesis and atrophy during bed rest in older men

### **Dr. Smita Halder – McMaster University**

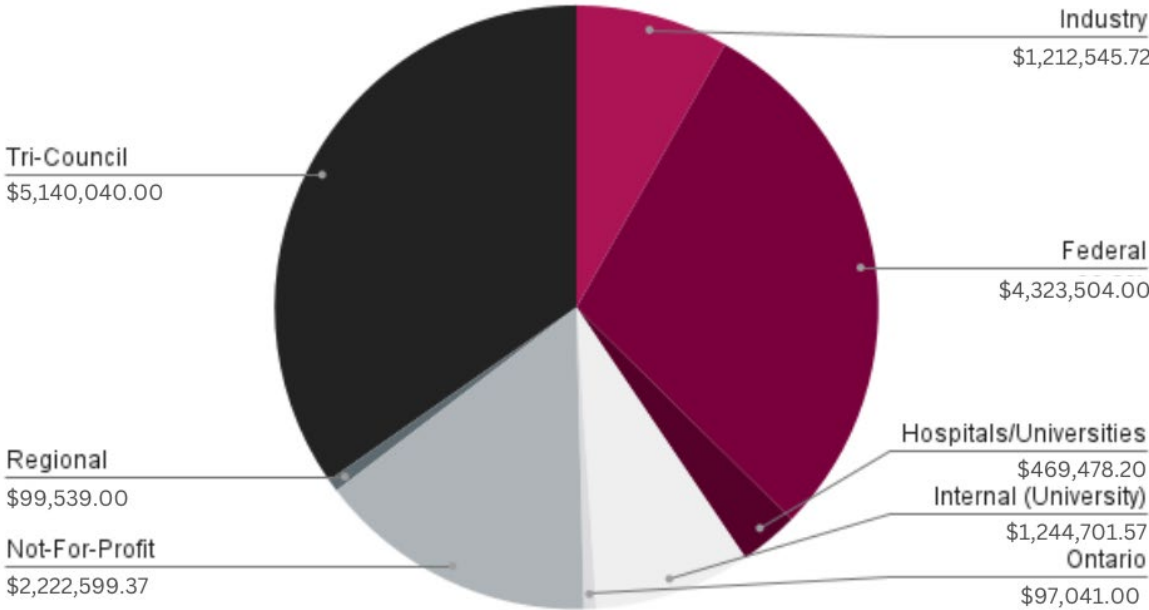
Coaching: Realizing the full potential of Faculty

### **Dr. Landry Nfonsam –Hamilton Regional Laboratory Program**

Transitioning from basic research to a clinical laboratory analyst: A personal experience

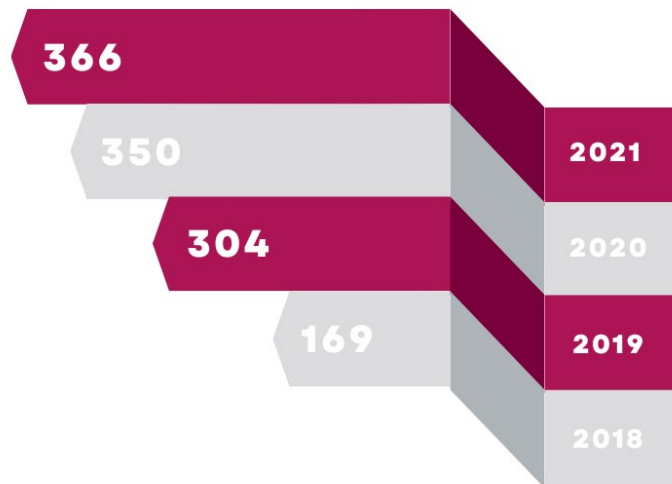
# RESEARCH FUNDING

The chart below shows the composition of the funding dollars for MODR research in 2021.



# RESEARCH IMPACT

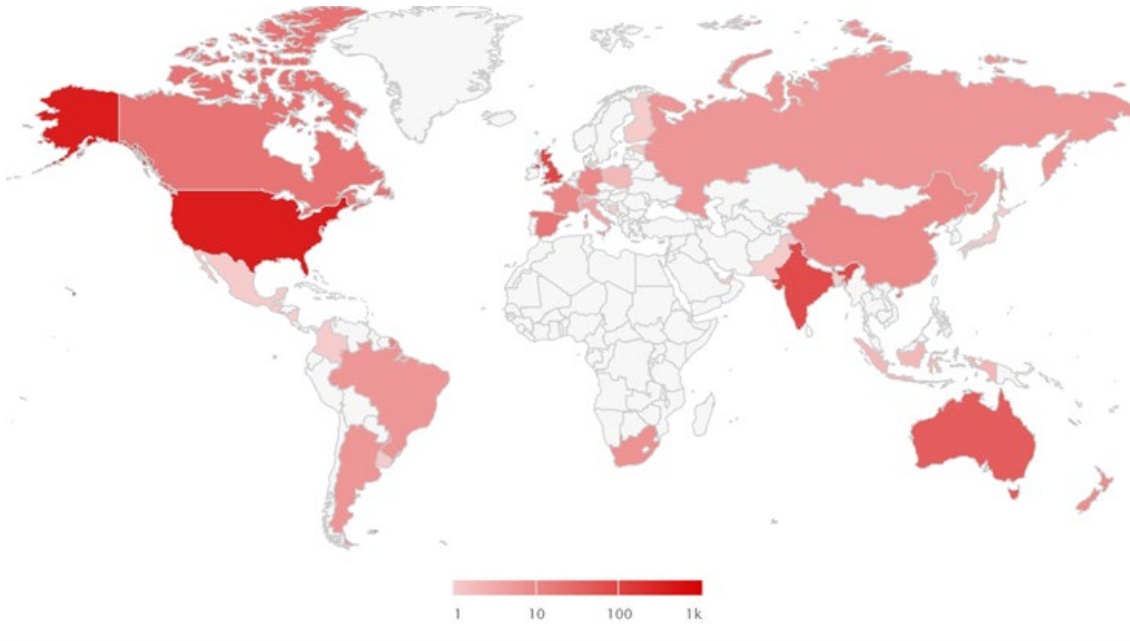
MODR's current membership includes 47 faculty, spanning 14 different departments at McMaster University. 2021 was our most productive year as a Centre, with 366 publications in 258 different Journals.



According to Web of Science, MODR members were cited over 116 000 times between July 1, 2018 and December 31, 2021. This Treemap depicts the number of publications across different research categories in the same time frame.



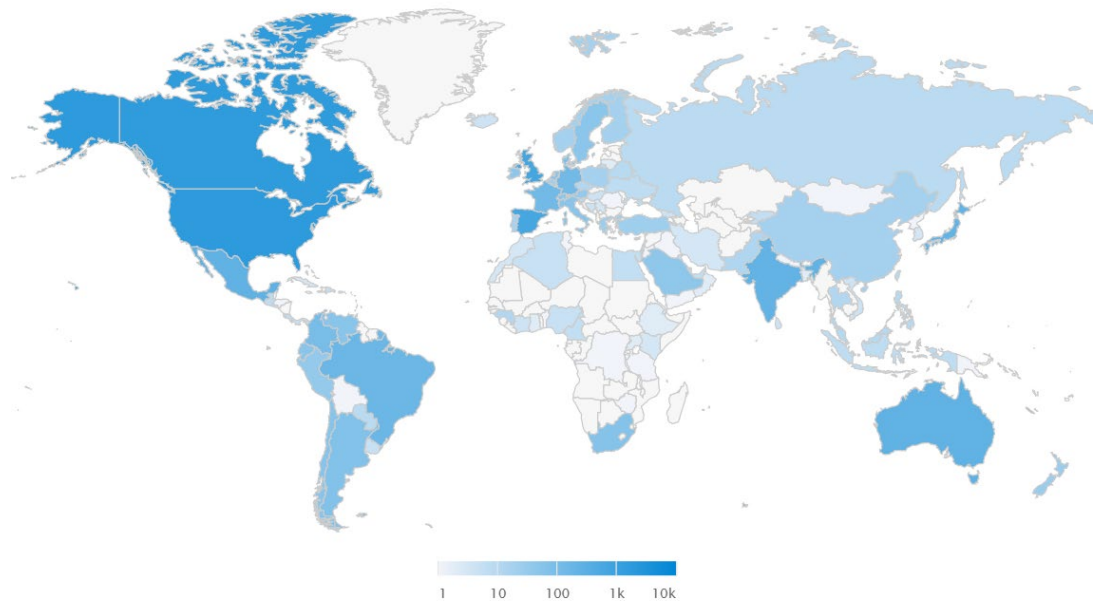




In 2021, the translational findings from MODR Investigators have been shared through 703 news stories in 32 countries.



There have been 12,095 tweets about this content by 7,262 unique tweeters in 119 countries.



# PUBLICATION HIGHLIGHTS

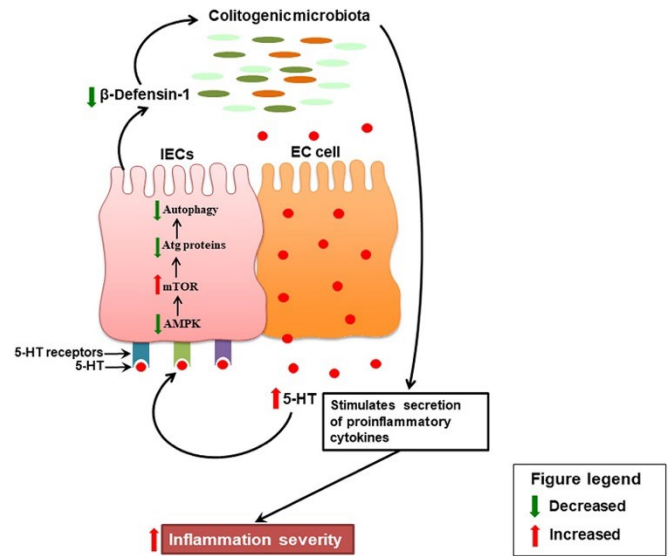
Interdisciplinary collaboration & exciting research findings

## Disruption of autophagy by increased 5-HT alters gut microbiota and enhances susceptibility to experimental colitis and Crohn's disease

Haq S, Wang H, Grondin J, Banskota S, Marshall JK, Khan II, Chauhan U, Cote F, Kwon YH, Philpott D, Brumell JH, Surette M, Steinberg GR, Khan WI

*Science Advances* 7(45)

This paper reports about the impact of the interaction between serotonin (5-HT) and autophagy in colitis in mice and human subjects. In mice, increased 5-HT inhibited autophagy, an intracellular recycling process, and increased colitis susceptibility. Decreased 5-HT up regulated autophagy and decreased colitis susceptibility. This study suggests 5-HT as a therapeutic target for intestinal inflammatory disorders.



## Fetal meconium does not have a detectable microbiota before birth

Kennedy KM, Gerlach MJ, Adam T, Heimesaat MM, Rossi L, Surette MG, Sloboda DM, Braun T

*Nature Microbiology* 6(1)

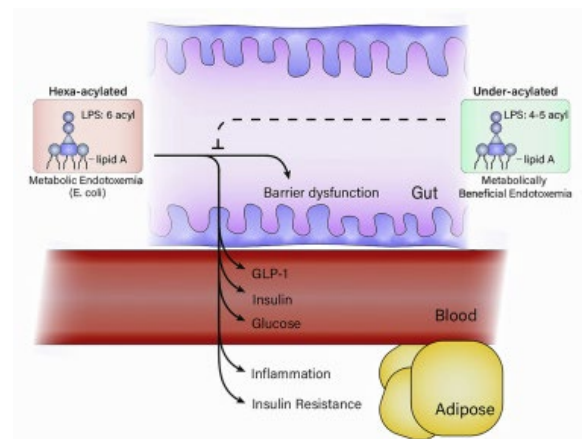
This study investigated if bacteria could be detected in the meconium before birth. By collecting sample swabs, the study found that fetal gut colonization of healthy term infants did not occur before birth and the microbial profiles that were collected from the swabs were reflections of what was acquired before and after birth.

## Metabolic endotoxemia is dictated by the type of lipopolysaccharide (LPS)

Anhê FF, Barra NG, Cavallari JF, Henriksbo BD, Schertzer JD

*Cell Reports Volume* 36(11)

This article explores how LPSs can promote metabolic endotoxemia, which is considered inflammatory and metabolically detrimental based on Toll-like receptor (TLR)4 agonists. It was found that *E. coli* derived LPS impairs gut barrier function such as dysglycemia and adipose inflammation and delays intestinal glucose absorption whereas *R. sphaeroides* derived LPS counteract these effects. It was concluded that LPS characteristics such as lipid A acylation should be considered to determine the effect on metabolic endotoxemia.



## Impaired function and altered morphology in the skeletal muscles of adult men and women with type 1 diabetes

Dial AG, Monaco CMF, Grafham GK, Patel TP, Tarnopolsky MA, Hawke TJ

*The Journal of Clinical Endocrinology & Metabolism* 106(8)

The data collected from this study through maximal contraction testing, resting muscle biopsy, and venous blood sampling suggest impairments to skeletal muscle function and morphology in those diagnosed with type 1 diabetes (T1D). After 35 years of age, those with T1D experience an accelerated decline in strength which may speak to the earlier onset of frailty. This acceleration was especially seen in older women as they expressed more myofibers.

## Income and neighbourhood deprivation in relation to obesity in urban dwelling children 0–12 years of age: a cross-sectional study from 2013 to 2019

Anderson LN, Fatima T, Shah B, Smith BT, Fuller AE, Borkhoff CM, Keown-Stoneman CDG, Maguire JL, Birken CS

*Journal of Epidemiology and Community Health* 76(3)

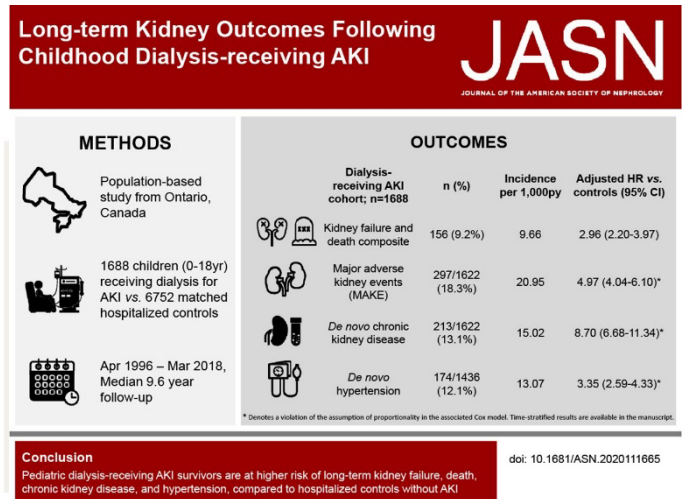
This cross-sectional study looked at family income and the child's height and weight were measured, as well as the BMI calculated. A total of 5962 children were included. Children of lower income families or high deprivation neighborhoods were found to have higher OR of obesity. The study concludes that socioeconomic inequalities at both individual and neighborhood levels should be addressed in childhood obesity interventions.

## Long-Term Kidney Outcomes Following Dialysis-Treated Childhood Acute Kidney Injury: A Population-Based Cohort Study

Robinson CH, Jeyakumar N, Luo B, Wald R, Garg AX, Nash DM, McArthur E, Greenberg JH, Askenazi D, Mammen C, Thabane L, Goldstein S, Parekh RS, Zappitelli M, Chanchlani R

*Journal of the American Society of Nephrology* 32(8)

This study was conducted in order to observe the long-term effects of kidney failure. The study identified 1688 pediatric dialysis-treated acute kidney injury survivors and 6752 matched comparators. In a 9.6 year follow up, the survivors had a higher risk of a composite outcome of kidney failure or death. The survivors were also at a significantly higher risk of developing chronic kidney disease and hypertension. The risk was greatest in the first year after discharge and decreased over time.



## Low dietary fiber promotes enteric expansion of a Crohn's disease-associated pathobiont independent of obesity

Lau TC, Fiebig-Comyn AA, Shaler CR, McPhee JB, Coombes BK, Schertzer JD

*American Journal Physiology- Endocrinology & Metabolism* 321(3)

This study investigated varying diets for mice to illustrate the effect of the expansion of intestinal pathobionts linked to Crohn's disease (CD). The results reveal that lower dietary fiber is a key factor for the expansion of a gut pathobiont linked to CD, trumping the common thought that high-fat diets alter pathogenic bacteria to promote inflammatory gut diseases.



## Metformin in combination with chemoradiotherapy in locally advanced non-small cell lung cancer

Tsakiridis T, Pond GR, Wright J, Ellis PM, Ahmed N, Abdulkarim B, Roa W, Robinson A, Swaminath A, Okawara G, Wierzbicki M, Valdes M, Levine M

*JAMA Oncology* 7(9)

In this randomized trial, it was concluded that the addition of a diabetes agent, metformin, to chemoradiotherapy was affiliated with increased toxic effects and decreased treatment efficacy. This addition is not recommended for the treatment of locally advanced non-small cell lung cancer in patients who do not have diabetes.

## The association between late preterm birth and cardiometabolic conditions across the life course: A systematic review and meta-analysis

Yoshida-Montezuma Y, Stone E, Iftikhar S, De Rubeis V, Andreacchi AT, Keown-Stoneman C, Mbuagbaw L, Brown HK, de Souza RJ, Anderson LN

*Paediatric and Perinatal Epidemiology* 36(2)

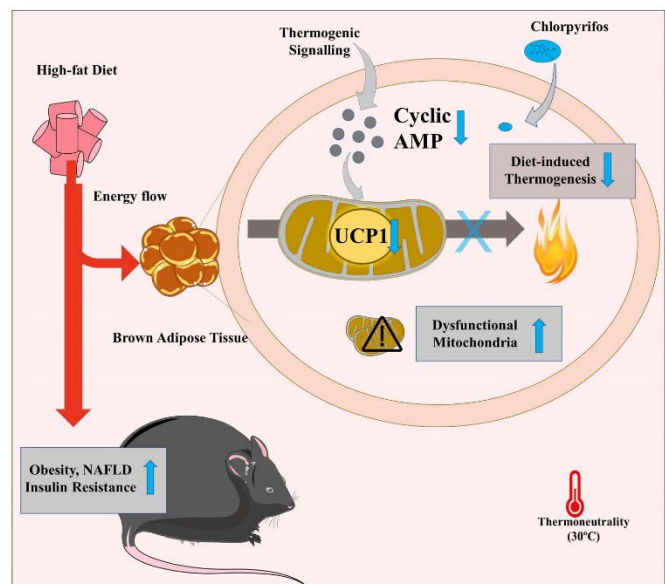
This paper studied the relationship between late preterm birth and cardiometabolic outcomes in children and adults. Through observational studies and analysis of data, the study found that late preterm birth was linked to higher occurrences of diabetes and hypertension in both children and adults. There was also an association between late preterm birth and lower BMI z-scores.

## The pesticide chlorpyrifos promotes obesity by inhibiting diet-induced thermogenesis in brown adipose tissue

Wang B, Tsakiridis EE, Zhang S, Llanos A, Desjardins EM, Yabut JM, Green AE, Day EA, Smith BK, Lally JSV, Wu J, Raphenya AR, Srinivasan KA, McArthur AG, Kajimura S, Patel JS, Wade MG, Morrison KM, Holloway AC, Steinberg GR

*Nature Communications* 12(1)

From this study, it was discovered that the commonly used pesticide chlorpyrifos (CPF) suppresses diet-induced thermogenesis and activation of brown adipose tissue (BAT). This promotes obesity, non-alcoholic fatty liver disease and insulin resistance. It will be important to determine associations between BAT metabolic activity and CPF in humans.



# PAPERS & PUBLICATIONS

---

\* Names of MODR Investigators bolded

Abdessemed, M., Mougharbel, F., Hafizi, K., Cameron, J. D., Heidinger, B., Barnes, J., D'Angiulli, A., Adamo, K. B., Carson, V., Okely, A. D., Lang, J. J., **Timmons, B. W.**, Longmuir, P. E., Tremblay, M. S., Tucker, P., & Goldfield, G. S. (2021). Associations between physical activity, sedentary time and social-emotional functioning in young children. *Mental Health and Physical Activity*, 21, 100422.

<https://doi.org/10.1016/j.mhpa.2021.100422>

Abdollahi, S., Kazemi, A., **de Souza, R. J.**, Clark, C. C. T., & Soltani, S. (2021). The effect of meal frequency on biochemical cardiometabolic factors: A systematic review and meta-analysis of randomized controlled trials. *Clin Nutr*, 40(5), 3170-3181. <https://doi.org/10.1016/j.clnu.2020.12.038>

Abdollahi, S., Soltani, S., **de Souza, R. J.**, Forbes, S. C., Toupchian, O., & Salehi-Abargouei, A. (2021). Associations between Maternal Dietary Patterns and Perinatal Outcomes: A Systematic Review and Meta-Analysis of Cohort Studies. *Adv Nutr*, 12(4), 1332-1352.

<https://doi.org/10.1093/advances/nmaa156>

Acosta, N., Thornton, C. S., **Surette, M. G.**, Somayaji, R., Rossi, L., Rabin, H. R., & Parkins, M. D. (2021). Azithromycin and the microbiota of cystic fibrosis sputum. *BMC Microbiol*, 21(1), 96.

<https://doi.org/10.1186/s12866-021-02159-5>

Adachi, J. D., Brown, J. P., Schemitsch, E., **Tarride, J. E.**, Brown, V., Bell, A. D., Reiner, M., Packalen, M., Motsepe-Ditshego, P., Burke, N., & Slatkowska, L. (2021). Fragility fracture identifies patients at imminent risk for subsequent fracture: real-world retrospective database study in Ontario, Canada. *BMC Musculoskelet Disord*, 22(1), 224. <https://doi.org/10.1186/s12891-021-04051-9>

Ahmed, B. A., Ong, F. J., Barra, N. G., Blondin, D. P., Gunn, E., Oreskovich, S. M., Szamosi, J. C., Syed, S. A., Hutchings, E. K., Konyer, N. B., Singh, N. P., Yabut, J. M., Desjardins, E. M., Anhe, F. F., Foley, K. P., **Holloway, A. C.**, **Noseworthy, M. D.**, Haman, F., Carpentier, A. C., **Surette, M.G.**, **Schertzer, J.D.**, **Punthakee, Z.**, **Steinberg, G.R.**, **Morrison, K. M.** (2021). Lower brown adipose tissue activity is associated with non-alcoholic fatty liver disease but not changes in the gut microbiota. *Cell Rep Med*, 2(9), 100397.

<https://doi.org/10.1016/j.xcrm.2021.100397>

Ahmed, R. J., Gafni, A., **Hutton, E. K.**, Hu, Z. J., Sanchez, J. J., Murphy, H. R., Feig, D. S., & Group, C. C. (2021). The cost implications of continuous glucose monitoring in pregnant women with type 1 diabetes in 3 Canadian provinces: a posthoc cost analysis of the CONCEPTT trial. *CMAJ Open*, 9(2), E627-E634.

<https://doi.org/10.9778/cmajo.20200128>

Alabbas, A., Harvey, E., Kirpalani, A., Teoh, C. W., Mammen, C., Pederson, K., Nemec, R., Davis, T. K., Mathew, A., McCormick, B., Banks, C. A., Frenette, C. H., Clark, D. A., Zimmerman, D., Qirjazi, E., Mac-Way, F., Vorster, H., Antonsen, J. E., Kappel, J. E., **Chanchlani, R.** (2021). Canadian Association of Paediatric Nephrologists COVID-19 Rapid Response: Home and In-Center Dialysis Guidance. *Can J Kidney Health Dis*, 8, 20543581211053458. <https://doi.org/10.1177/20543581211053458>

Alabbas, A., Kirpalani, A., Morgan, C., Mammen, C., Licht, C., Phan, V., Wade, A., Harvey, E., Zappitelli, M., Clark, E. G., Hiremath, S., Soroka, S. D., Wald, R., Weir, M. A., **Chanchlani, R.**, & Lemaire, M. (2021). Canadian Association of Paediatric Nephrologists COVID-19 Rapid Response: Guidelines for Management of Acute Kidney Injury in Children. *Can J Kidney Health Dis*, 8, 2054358121990135. <https://doi.org/10.1177/2054358121990135>

**Anand, S. S.**, Bell, A. D., & Szalay, D. (2021). The Time Has Come for Vascular Medicine in Canada. *Can J Cardiol*, 37(10), 1677. <https://doi.org/10.1016/j.cjca.2021.01.011>

**Anderson, L. N.**, Fatima, T., Shah, B., Smith, B. T., Fuller, A. E., Borkhoff, C. M., Keown-Stoneman, C. D. G., Maguire, J. L., & Birken, C. S. (2022). Income and neighbourhood deprivation in relation to obesity in urban dwelling children 0-12 years of age: a cross-sectional study from 2013 to 2019. *J Epidemiol Community Health*, 76(3), 274-280. <https://doi.org/10.1136/jech-2021-216455>

Andreacchi, A. T., Griffith, L. E., Guindon, G. E., Mayhew, A., Bassim, C., **Pigeyre, M.**, Stranges, S., & **Anderson, L. N.** (2021). Body mass index, waist circumference, waist-to-hip ratio, and body fat in relation to health care use in the Canadian Longitudinal Study on Aging. *Int J Obes (Lond)*, 45(3), 666-676. <https://doi.org/10.1038/s41366-020-00731-z>

Andreacchi, A. T., Oz, U. E., Bassim, C., Griffith, L. E., Mayhew, A., **Pigeyre, M.**, Stranges, S., Verschoor, C. P., & **Anderson, L. N.** (2021). Clustering of obesity-related characteristics: A latent class analysis from the Canadian Longitudinal Study on Aging. *Prev Med*, 153, 106739. <https://doi.org/10.1016/j.pmed.2021.106739>

Anhe, F. F., Barra, N. G., Cavallari, J. F., Henriksbo, B. D., & **Schertzer, J. D.** (2021). Metabolic endotoxemia is dictated by the type of lipopolysaccharide. *Cell Rep*, 36(11), 109691. <https://doi.org/10.1016/j.celrep.2021.109691>

Anhe, F. F., Jensen, B. A. H., Perazza, L. R., Tchernof, A., **Schertzer, J. D.**, & Marette, A. (2021). Bacterial Postbiotics as Promising Tools to Mitigate Cardiometabolic Diseases. *J Lipid Atheroscler*, 10(2), 123-129. <https://doi.org/10.12997/jla.2021.10.2.123>

Apatu, E., Sinnott, W., Piggott, T., Butler-Jones, D., **Anderson, L. N.**, Alvarez, E., Dobbins, M., Harrison, L., & Neil-Sztramko, S. E. (2021). Where Are We Now? A Content Analysis of Canadian Master of Public Health Course Descriptions and the Public Health Agency of Canada's Core Competencies. *J Public Health Manag Pract*, 27(2), 201-207. <https://doi.org/10.1097/PHH.0000000000001173>

Apatu, E., Stallings-Smith, S., Alvarez, E., **Anderson, L.N.**, & Spaulding, A. (2021). Does community engaged Carnegie status matter for county health rankings in the United States? *J Public Health (Oxf)*, 43(1), 164-171. <https://doi.org/10.1093/pubmed/fdz066>

Arabi Belaghi, R., Beyene, J., & **McDonald, S. D.** (2021). Clinical risk models for preterm birth less than 28 weeks and less than 32 weeks of gestation using a large retrospective cohort. *J Perinatal*, 41(9), 2173-2181. <https://doi.org/10.1038/s41372-021-01109-3>

Arabi Belaghi, R., Beyene, J., & **McDonald, S. D.** (2021). Prediction of preterm birth in nulliparous women using logistic regression and machine learning. *PLoS One*, 16(6), e0252025. <https://doi.org/10.1371/journal.pone.0252025>

Archila, L. R., Bostad, W., Joyner, M. J., & **Gibala, M. J.** (2021). Simple Bodyweight Training Improves Cardiorespiratory Fitness with Minimal Time Commitment: A Contemporary Application of the 5BX Approach. *Int J Exerc Sci*, 14(3), 93-100. <https://www.ncbi.nlm.nih.gov/pubmed/34055156>

Aukes, A. M., Arion, K., Bone, J. N., Li, J., Vidler, M., Bellad, M. B., Charantimath, U., Goudar, S. S., Hoodbhoy, Z., Katageri, G., Macuacua, S., Mallapur, A. A., Munguambe, K., Qureshi, R. N., Saco, C., Sevens, E., Sheikh, S., Valá, A., Lewis, G., . . . Adetoro, O. O. (2021). Causes and circumstances of maternal death: a secondary analysis of the Community-Level Interventions for Pre-eclampsia (CLIP) trials cohort. *The Lancet Global Health*, 9(9), e1242–e1251. [https://doi.org/10.1016/s2214-109x\(21\)00263-1](https://doi.org/10.1016/s2214-109x(21)00263-1)

Avelar Rodriguez, D., Popov, J., **Ratcliffe, E. M.**, & Toro Monjaraz, E. M. (2020). Functional Constipation and the Gut Microbiome in Children: Preclinical and Clinical Evidence. *Front Pediatr*, 8, 595531. <https://doi.org/10.3389/fped.2020.595531>

Aviram, A., Berger, H., Abdulaziz, K. E., Barrett, J. F. R., Murray-Davis, B., **McDonald, S. D.**, Geary, M., Melamed, N., for, D.-N., & Investigators, S. (2021). Outcomes Associated With Hypertensive Disorders of Pregnancy in Twin Compared With Singleton Gestations. *Obstet Gynecol*, 138(3), 449-458. <https://doi.org/10.1097/AOG.0000000000004506>

Ayoub-Charette, S., Chiavaroli, L., Liu, Q., Khan, T. A., Zurbau, A., Au-Yeung, F., Cheung, A., Ahmed, A., Lee, D., Choo, V. L., Blanco Mejia, S., **de Souza, R. J.**, Wolever, T. M., Leiter, L. A., Kendall, C. W., Jenkins, D. J., & Sievenpiper, J. L. (2021). Different Food Sources of Fructose-Containing Sugars and Fasting Blood Uric Acid Levels: A Systematic Review and Meta-Analysis of Controlled Feeding Trials. *J Nutr*, 151(8), 2409-2421. <https://doi.org/10.1093/jn/nxab144>

Ayyash, A., & **Holloway, A. C.** (2021). Fluoxetine-induced hepatic lipid accumulation is linked to elevated serotonin production. *Can J Physiol Pharmacol*, 99(9), 983-988. <https://doi.org/10.1139/cjpp-2020-0721>

Ayyash, A., & **Holloway, A. C.** (2022). Fluoxetine-induced hepatic lipid accumulation is mediated by prostaglandin endoperoxide synthase 1 and is linked to elevated 15-deoxy-Delta(12,14) PGJ2. *J Appl Toxicol*, 42(6), 1004-1015. <https://doi.org/10.1002/jat.4272>



Azab, S. M., **de Souza, R. J.**, Lamri, A., Shanmuganathan, M., Kroezen, Z., Schulze, K. M., Desai, D., Williams, N. C., **Morrison, K. M.**, Atkinson, S. A., Teo, K. K., Britz-McKibbin, P., & **Anand, S. S.** (2021). Metabolite profiles and the risk of metabolic syndrome in early childhood: a case-control study. *BMC Med*, 19(1), 292. <https://doi.org/10.1186/s12916-021-02162-7>

Azamar-Alonso, A., Bautista-Arredondo, S. A., Smaill, F., Mbuagbaw, L., Costa, A. P., & **Tarride, J. E.** (2021). Patient characteristics and determinants of CD4 at diagnosis of HIV in Mexico from 2008 to 2017: a 10-year population-based study. *AIDS Res Ther*, 18(1), 84. <https://doi.org/10.1186/s12981-021-00409-0>

Bajaj, H. S., **Gerstein, H. C.**, Rao-Melacini, P., Basile, J., Colhoun, H., Conget, I., Cushman, W. C., Dagenais, G. R., Franek, E., Hanefeld, M., Keltai, M., Lakshmanan, M., Lanus, F., Leiter, L. A., Lopez-Jaramillo, P., Pirags, V., Pogossova, N., Probstfield, J., Raubenheimer, P., Xavier, D. (2021). Erectile function in men with type 2 diabetes treated with dulaglutide: an exploratory analysis of the REWIND placebo-controlled randomised trial. *The Lancet Diabetes & Endocrinology*, 9(8), 484–490. [https://doi.org/10.1016/s2213-8587\(21\)00115-7](https://doi.org/10.1016/s2213-8587(21)00115-7)

Balabanski, A. H., Dos Santos, A., Woods, J. A., Thrift, A. G., Kleinig, T. J., Suchy-Dicey, A., Siri, S. R., Boden-Albala, B., Krishnamurthi, R., Feigin, V. L., Buchwald, D., Ranta, A., Mienna, C. S., Zavaleta, C., Churilov, L., Burchill, L., Zion, D., Longstreth, W. T., Jr., Tirschwell, D. L., **Anand, S.S.**, Katzenellenbogen, J. M. (2021). The Incidence of Stroke in Indigenous Populations of Countries With a Very High Human Development Index: A Systematic Review Protocol. *Front Neurol*, 12, 661570. <https://doi.org/10.3389/fneur.2021.661570>

Ball, G., Levine, M., Thabane, L., & **Tarride, J. E.** (2021). Onwards and Upwards: A Systematic Survey of Economic Evaluation Methods in Oncology. *Pharmacoecon Open*, 5(3), 397-410. <https://doi.org/10.1007/s41669-021-00263-w>

Bamhraz, A. A., Franken, G. A. C., de Baaij, J. H. F., Rodrigues, A., Grady, R., Deveau, S., & **Chanchlani, R.** (2021). Diagnostic Dilemma in an Adolescent Girl with an Eating Disorder, Intellectual Disability, and Hypomagnesemia. *Nephron*, 145(6), 717-720. <https://doi.org/10.1159/000518173>

Banerjee, A. T., Mahajan, A., Mathur-Balendra, A., Qureshi, N., Teekah, M., Yogaratnam, S., Prabhakar, P., Ahmed, S., Shah, B. R., Velummailum, R., Price, J. A., **de Souza, R. J.**, & Bajaj, H. S. (2021). Impact of the South Asian Adolescent Diabetes Awareness Program (SAADAP) on diabetes knowledge, risk perception and health behaviour. *Health Education Journal*, 81(1), 96–108. <https://doi.org/10.1177/00178969211051054>

Banerjee, A., El-Sayes, N., Budyłowski, P., Jacob, R. A., Richard, D., Maan, H., Aguiar, J. A., Demian, W. L., Baid, K., D'Agostino, M. R., Ang, J. C., Murdza, T., Tremblay, B. J., Afkhami, S., Karimzadeh, M., Irving, A. T., Yip, L., Ostrowski, M., Hirota, J. A., Kozak R, Capellini T.D., Miller, M.S., Wang B, Mubareka S, McGeer, A.J., McArthur, A.G., Doxey, A.C., Mossman, K. (2021). Experimental and natural evidence of SARS-CoV-2-infection-induced activation of type I interferon responses. *iScience*, 24(5), 102477. <https://doi.org/10.1016/j.isci.2021.102477>

Banskota, S., Brim, H., Kwon, Y. H., Singh, G., Sinha, S. R., Wang, H., **Khan, W. I.**, & Ashktorab, H. (2021). Saffron Pre-Treatment Promotes Reduction in Tissue Inflammatory Profiles and Alters Microbiome Composition in Experimental Colitis Mice. *Molecules*, 26(11).

<https://doi.org/10.3390/molecules26113351>

Banskota, S., Wang, H., Kwon, Y. H., Gautam, J., Gurung, P., Haq, S., Hassan, F. M. N., Bowdish, D. M., Kim, J. A., Carling, D., Fullerton, M. D., **Steinberg, G. R.**, & **Khan, W. I.** (2021). Salicylates Ameliorate Intestinal Inflammation by Activating Macrophage AMPK. *Inflamm Bowel Dis*, 27(6), 914-926.

<https://doi.org/10.1093/ibd/izaa305>

Bardugo, A., Bendor, C. D., Zucker, I., Lutski, M., Cukierman-Yaffe, T., Derazne, E., Mosenzon, O., Tzur, D., Beer, Z., Pinhas-Hamiel, O., Ben-Ami, M., Fishman, B., Ben-Ami Shor, D., Raz, I., Afek, A., **Gerstein, H. C.**, Haring, H. U., Tirosh, A., Levi, Z., & Twig, G. (2021). Adolescent Nonalcoholic Fatty Liver Disease and Type 2 Diabetes in Young Adulthood. *J Clin Endocrinol Metab*, 106(1), e34-e44.

<https://doi.org/10.1210/clinem/dgaa753>

Bardugo, A., Derazne, E., Zucker, I., Bendor, C. D., Puris, G., Lutski, M., Pinhas-Hamiel, O., Cukierman-Yaffe, T., Mosenzon, O., Schechter, M., Tzur, D., Afek, A., Tirosh, A., **Gerstein, H. C.**, Raz, I., & Twig, G. (2021). Adolescent Thyroid Disorders and Risk for Type 2 Diabetes in Young Adulthood. *J Clin Endocrinol Metab*, 106(9), e3426-e3435. <https://doi.org/10.1210/clinem/dgab382>

Barra, N. G., Anhe, F. F., Cavallari, J. F., Singh, A. M., Chan, D. Y., & **Schertzer, J. D.** (2021). Micronutrients impact the gut microbiota and blood glucose. *J Endocrinol*, 250(2), R1-R21. <https://doi.org/10.1530/JOE-21-0081>

Basu, R. K., Bjornstad, E. C., Gist, K. M., Starr, M., Khandhar, P., **Chanchlani, R.**, Krallman, K. A., Zappitelli, M., Askenazi, D., Goldstein, S. L., & Investigators, S. (2022). Acute kidney injury in critically ill children and young adults with suspected SARS-CoV2 infection. *Pediatr Res*, 91(7), 1787-1796.

<https://doi.org/10.1038/s41390-021-01667-4>

Bauersachs, R. M., Szarek, M., Brodmann, M., Gudz, I., Debus, E. S., Nehler, M. R., **Anand, S. S.**, Patel, M. R., Hess, C. N., Capell, W. H., Rogers, K., Muehlhofer, E., Haskell, L. P., Berkowitz, S. D., Hiatt, W. R., Bonaca, M. P., Committees, V. P., & Investigators. (2021). Total Ischemic Event Reduction With Rivaroxaban After Peripheral Arterial Revascularization in the VOYAGER PAD Trial. *J Am Coll Cardiol*, 78(4), 317-326. <https://doi.org/10.1016/j.jacc.2021.05.003>

Bethel, M. A., Diaz, R., Castellana, N., Bhattacharya, I., **Gerstein, H. C.**, & Lakshmanan, M. C. (2021). HbA1c Change and Diabetic Retinopathy During GLP-1 Receptor Agonist Cardiovascular Outcome Trials: A Meta-analysis and Meta-regression. *Diabetes Care*, 44(1), 290-296. <https://doi.org/10.2337/dc20-1815>

Bharwani, A., Szamosi, J. C., Taylor, V. H., Lee, Y., Bala, A., Mansur, R., Subramaniapillai, M., **Surette, M.**, & McIntyre, R. S. (2021). Changes in the gut microbiome associated with infliximab in patients with bipolar disorder. *Brain Behav*, 11(8), e2259. <https://doi.org/10.1002/brb3.2259>

Bhasin, S., Hatfield, D. L., Hoffman, J. R., Kraemer, W. J., Labotz, M., **Phillips, S. M.**, & Ratamess, N. A. (2021). Anabolic-Androgenic Steroid Use in Sports, Health, and Society. *Med Sci Sports Exerc*, 53(8), 1778-1794. <https://doi.org/10.1249/MSS.0000000000002670>

Bhat, S. F., Pinney, S. E., Kennedy, K. M., McCourt, C. R., Mundy, M. A., **Surette, M. G.**, **Sloboda, D. M.**, & Simmons, R. A. (2021). Exposure to high fructose corn syrup during adolescence in the mouse alters hepatic metabolism and the microbiome in a sex-specific manner. *J Physiol*, 599(5), 1487-1511. <https://doi.org/10.1113/JP280034>

Bjornstad, E. C., Krallman, K. A., Askenazi, D., Zappitelli, M., Goldstein, S. L., Basu, R. K., & Investigators, S. (2021). Preliminary Assessment of Acute Kidney Injury in Critically Ill Children Associated with SARS-CoV-2 Infection: A Multicenter Cross-Sectional Analysis. *Clin J Am Soc Nephrol*, 16(3), 446-448. <https://doi.org/10.2215/CJN.11470720>

Black, M. N., Wilkinson, J. A., Webb, E. K., Kamal, M., Bahniwal, R., McGlory, C., **Phillips, S. M.**, & Devries, M. C. (2021). Two weeks of single-leg immobilization alters intramyocellular lipid storage characteristics in healthy, young women. *J Appl Physiol* (1985), 130(4), 1247-1258. <https://doi.org/10.1152/jappphysiol.00878.2019>

Bone, J. N., Magee, L. A., Singer, J., Nathan, H., Qureshi, R. N., Sacoar, C., Sevene, E., Shennan, A., Bellad, M. B., Goudar, S. S., Mallapur, A. A., Munguambe, K., Vidler, M., Bhutta, Z. A., von Dadelszen, P., Woo Kinshella, M. L., Wong, H., Vilanculo, F., Vala, A., . . . Adetoro, O. O. (2021). Blood pressure thresholds in pregnancy for identifying maternal and infant risk: a secondary analysis of Community-Level Interventions for Pre-eclampsia (CLIP) trial data. *The Lancet Global Health*, 9(8), e1119–e1128. [https://doi.org/10.1016/s2214-109x\(21\)00219-9](https://doi.org/10.1016/s2214-109x(21)00219-9)

Bostad, W., Valentino, S. E., McCarthy, D. G., Richards, D. L., MacInnis, M. J., MacDonald, M. J., & **Gibala, M. J.** (2021). Twelve weeks of sprint interval training increases peak cardiac output in previously untrained individuals. *Eur J Appl Physiol*, 121(9), 2449-2458. <https://doi.org/10.1007/s00421-021-04714-4>

Botta, A., Barra, N. G., Lam, N. H., Chow, S., Pantopoulos, K., **Schertzer, J. D.**, & Sweeney, G. (2021). Iron Reshapes the Gut Microbiome and Host Metabolism. *J Lipid Atheroscler*, 10(2), 160-183. <https://doi.org/10.12997/jla.2021.10.2.160>

Bouzanis, K., Joshi, S., Lokker, C., Pavalagantharajah, S., Qiu, Y., Sidhu, H., Mbuagbaw, L., Qutob, M., Henedi, A., Levine, M. A. H., Lennox, R., **Tarride, J. E.**, Kalina, D., & Alvarez, E. (2021). Health programmes and services addressing the prevention and management of infectious diseases in people who inject drugs in Canada: a systematic integrative review. *BMJ Open*, 11(9), e047511. <https://doi.org/10.1136/bmjopen-2020-047511>

Breznik, J. A., Foley, K. P., Maddiboina, D., **Schertzer, J. D.**, **Sloboda, D. M.**, & Bowdish, D. M. E. (2021). Effects of Obesity-Associated Chronic Inflammation on Peripheral Blood Immunophenotype Are Not Mediated by TNF in Female C57BL/6J Mice. *Immunohorizons*, 5(6), 370-383. <https://doi.org/10.4049/immunohorizons.2100038>

Breznik, J. A., Schulz, C., Ma, J., **Sloboda, D. M.**, & Bowdish, D. M. E. (2021). Biological sex, not reproductive cycle, influences peripheral blood immune cell prevalence in mice. *J Physiol*, 599(8), 2169-2195. <https://doi.org/10.1113/JP280637>

Brown, D. M. Y., McPhee, P. G., Kwan, M. Y., & **Timmons, B. W.** (2021). Implications of Disability Severity on 24-Hour Movement Guideline Adherence Among Children With Neurodevelopmental Disorders in the United States. *J Phys Act Health*, 18(11), 1325-1331. <https://doi.org/10.1123/jpah.2021-0282>

Brown, J. P., Adachi, J. D., Schemitsch, E., **Tarride, J. E.**, Brown, V., Bell, A., Reiner, M., Oliveira, T., Motsepe-Ditshego, P., Burke, N., & Slatkowska, L. (2021). Mortality in older adults following a fragility fracture: real-world retrospective matched-cohort study in Ontario. *BMC Musculoskelet Disord*, 22(1), 105. <https://doi.org/10.1186/s12891-021-03960-z>

Brozek, J. L., Canelo-Aybar, C., Akl, E. A., Bowen, J. M., Bucher, J., Chiu, W. A., Cronin, M., Djulbegovic, B., Falavigna, M., Guyatt, G. H., Gordon, A. A., Hilton Boon, M., Hutubessy, R. C. W., Joore, M. A., Katikireddi, V., LaKind, J., Langendam, M., Manja, V., Magnuson, K., Alexander G. Mathioudakis, Meerpohl, J., Mertz, D., Mezencev, R., Morgan, R., Morgano, G.P., Mustafa, R., O'Flaherty, M., Patlewicz, G., Riva, J.J., Posso, M., Rooney, A., Schlosser, P.M., Schwartz, L., Shemilt, I., **Tarride, J.E.**, Thayer, K.A., Tsaion, K., Vale, L., Wambough, J., Wignall, J., Williams, A., Xie, F., Zhang, Y., Schünemann, H.J., (2021). GRADE Guidelines 30: the GRADE approach to assessing the certainty of modeled evidence-An overview in the context of health decision-making. *J Clin Epidemiol*, 129, 138-150. <https://doi.org/10.1016/j.jclinepi.2020.09.018>

Bruijns, B. A., Vanderloo, L. M., **Timmons, B. W.**, & Tucker, P. (2021). Exploring Preschoolers' Physical Activity and Sedentary Time During Outdoor Play at Childcare: A Cross-Sectional Analysis of the Supporting Physical Activity in the Childcare Environment Study. *J Phys Act Health*, 18(8), 949-956. <https://doi.org/10.1123/jpah.2020-0849>

Caldwell, H. A., Di Cristofaro, N. A., Cairney, J., Bray, S. R., & **Timmons, B. W.** (2021). Measurement properties of the Physical Literacy Assessment for Youth (PLAY) Tools. *Appl Physiol Nutr Metab*, 46(6), 571-578. <https://doi.org/10.1139/apnm-2020-0648>

Carcel-Marquez, J., Cullell, N., Muino, E., Gallego-Fabrega, C., Lledos, M., Ibanez, L., Krupinski, J., Montaner, J., Cruchaga, C., Lee, J. M., Gill, D., **Pare, G.**, Mola-Caminal, M., Roquer, J., Jimenez-Conde, J., Marti-Fabregas, J., & Fernandez-Cadenas, I. (2021). Causal Effect of MMP-1 (Matrix Metalloproteinase-1), MMP-8, and MMP-12 Levels on Ischemic Stroke: A Mendelian Randomization Study. *Stroke*, 52(7), e316-e320. <https://doi.org/10.1161/STROKEAHA.120.033041>

Carino, M., Elia, Y., Sellers, E., Curtis, J., McGavock, J., Scholey, J., Hamilton, J., Clarson, C., Pinto, T., Hadjiyannakis, S., Mertens, L., **Samaan, M. C.**, Ho, J., Nour, M., Panagiotopoulos, C., Jetha, M., Gabbs, M., Mahmud, F. H., Wicklow, B., & Dart, A. (2021). Comparison of Clinical and Social Characteristics of Canadian Youth Living With Type 1 and Type 2 Diabetes. *Can J Diabetes*, 45(5), 428-435. <https://doi.org/10.1016/j.cjcd.2021.01.008>



- Carlisle, R. E., Mohammed-Ali, Z., Lu, C., Yousof, T., Tat, V., Nademi, S., MacDonald, M. E., **Austin, R. C.**, & Dickhout, J. G. (2021). TDAG51 induces renal interstitial fibrosis through modulation of TGF-beta receptor 1 in chronic kidney disease. *Cell Death Dis*, 12(10), 921. <https://doi.org/10.1038/s41419-021-04197-3>
- Chan, K. K. W., Cheung, M. C., Regier, D. A., Hay, A., Louie, A. V., Cheung, W. Y., **Tarride, J. E.**, Udayakumar, S., & Mittmann, N. (2021). The Past, Present, and Future of Economic Evaluations of Precision Medicine at the Committee for Economic Analyses of the Canadian Cancer Trials Group. *Curr Oncol*, 28(5), 3649-3658. <https://doi.org/10.3390/curroncol28050311>
- Charpentier, C., **McDonald, S.**, Elwood, C., Ting, J., Grigoriu, A., Pylypjuk, C., Yudin, M., Van Schalkwyk, J., & Boucoiran, I. (2022). A Survey on Variation in Diagnosis and Treatment of Chorioamnionitis in Tertiary Centres in Canada. *J Obstet Gynaecol Can*, 44(1), 28-33. <https://doi.org/10.1016/j.jogc.2021.06.003>
- Chawar, C., Hillmer, A., Lamri, A., Kapczinski, F., Thabane, L., **Pare, G.**, & Samaan, Z. (2021). Implications of OPRM1 and CYP2B6 variants on treatment outcomes in methadone-maintained patients in Ontario: Exploring sex differences. *PLoS One*, 16(12), e0261201. <https://doi.org/10.1371/journal.pone.0261201>
- Chawar, C., Hillmer, A., Sanger, S., D'Elia, A., Panesar, B., Guan, L., Xie, D. X., Bansal, N., Abdullah, A., Kapczinski, F., **Pare, G.**, Thabane, L., & Samaan, Z. (2021). A systematic review of GWAS identified SNPs associated with outcomes of medications for opioid use disorder. *Addict Sci Clin Pract*, 16(1), 70. <https://doi.org/10.1186/s13722-021-00278-y>
- Cheng, A. J., & **Hawke, T. J.** (2021). Wasting away: AJP-Cell Physiology initiates thematic reviews on skeletal muscle wasting. *Am J Physiol Cell Physiol*, 321(1), C38-C39. <https://doi.org/10.1152/ajpcell.00165.2021>
- Chu, L., **Morrison, K. M.**, Riddell, M. C., **Raha, S.**, & **Timmons, B. W.** (2021). Metabolic Flexibility during Exercise in Children with Obesity and Matched Controls. *Med Sci Sports Exerc*, 53(1), 159-164. <https://doi.org/10.1249/MSS.0000000000002428>
- Chuang, S. J., Johanns, M., Pyr Dit Ruys, S., **Steinberg, G. R.**, Kemp, B. E., Viollet, B., & Rider, M. H. (2021). AMPK activation by SC4 inhibits noradrenaline-induced lipolysis and insulin-stimulated lipogenesis in white adipose tissue. *Biochem J*, 478(21), 3869-3889. <https://doi.org/10.1042/BCJ20210411>
- Cioana, M., Deng, J., Hou, M., Nadarajah, A., Qiu, Y., Chen, S. S. J., Rivas, A., Banfield, L., **Chanchlani, R.**, Dart, A., Wicklow, B., Alfaraidi, H., Alotaibi, A., Thabane, L., & **Samaan, M. C.** (2021). Prevalence of Hypertension and Albuminuria in Pediatric Type 2 Diabetes: A Systematic Review and Meta-analysis. *JAMA Netw Open*, 4(4), e216069. <https://doi.org/10.1001/jamanetworkopen.2021.6069>
- Coles, V. E., Darveau, P., Zhang, X., Harvey, H., Henriksbo, B. D., Yang, A., **Schertzer, J. D.**, Magolan, J., & Burrows, L. L. (2021). Exploration of BAY 11-7082 as a Potential Antibiotic. *ACS Infectious Diseases*, 8(1), 170-182. <https://doi.org/10.1021/acscinfecdis.1c00522>
- Colley, R. C., Clarke, J., Doyon, C. Y., Janssen, I., Lang, J. J., **Timmons, B. W.**, & Tremblay, M. S. (2021). Do fit kids have fit parents? *Health Rep*, 32(1), 3-12. <https://doi.org/10.25318/82-003-x202100100001-eng>

Collins-Nelsen, R., Koziarz, F., Levinson, B., Allard, E., Verkoeyen, S., & **Raha, S.** (2021). Social context and transferable skill development in experiential learning. *Innovations in Education and Teaching International*, 1–10. <https://doi.org/10.1080/14703297.2021.1886970>

Collins, J., Maughan, R. J., Gleeson, M., Bilsborough, J., Jeukendrup, A., Morton, J. P., Phillips, S. M., Armstrong, L., Burke, L. M., Close, G. L., Duffield, R., Larson-Meyer, E., Louis, J., Medina, D., Meyer, F., Rollo, I., Sundgot-Borgen, J., Wall, B. T., Boullosa, B., . . . McCall, A. (2021). UEFA expert group statement on nutrition in elite football. Current evidence to inform practical recommendations and guide future research. *Br J Sports Med*, 55(8), 416. <https://doi.org/10.1136/bjsports-2019-101961>

Collins, J., Maughan, R. J., Gleeson, M., Bilsborough, J., Jeukendrup, A., Morton, J. P., **Phillips, S. M.**, Armstrong, L. E., Burke, L. M., Close, G. L., Duffield, R., Larson-Meyer, E., Louis, J., Medina, D., Meyer, F., Rollo, I., Sundgot-Borgen, J. K., Wall, B., Boullosa, B., Dupont, G., Lizarraga, A., Res, P., Bizzini, M., Castagna, C., Cowie, C.M., D'Hooghe, M., Geyer, H., Meyer, T., Papadimitriou, N., Vouillamoz, M., McCall, A. (2021). Infographic. UEFA expert group 2020 statement on nutrition in elite football. *Br J Sports Med*, 55(8), 453-455. <https://doi.org/10.1136/bjsports-2020-103410>

Cukierman-Yaffe, T., McClure, L. A., Risoli, T., Bosch, J., Sharma, M., **Gerstein, H. C.**, & Benavente, O. (2021). The Relationship Between Glucose Control and Cognitive Function in People With Diabetes After a Lacunar Stroke. *J Clin Endocrinol Metab*, 106(4), e1521-e1528. <https://doi.org/10.1210/clinem/dgab022>

D'Alessandro, M., Vanniyasingam, T., Patel, A., Gupta, R., Giglia, L., Federici, G., & **Wahi, G.** (2021). Factors associated with treatment failure of high-flow nasal cannula among children with bronchiolitis: a single-centre retrospective study. *Paediatr Child Health*, 26(5), e229-e235. <https://doi.org/10.1093/pch/pxaa087>

D'Souza, A. C., Lau, K. J., & **Phillips, S. M.** (2022). Exercise in the maintenance of weight loss: health benefits beyond lost weight on the scale. *Br J Sports Med*, 56(13), 771-772. <https://doi.org/10.1136/bjsports-2021-104754>

Day, E. A., Ford, R. J., Smith, B. K., Houde, V. P., Stypa, S., Rehal, S., Lhotak, S., Kemp, B. E., **Trigatti, B. L.**, **Werstuck, G. H.**, **Austin, R. C.**, Fullerton, M. D., & **Steinberg, G. R.** (2021). Salsalate reduces atherosclerosis through AMPKbeta1 in mice. *Mol Metab*, 53, 101321. <https://doi.org/10.1016/j.molmet.2021.101321>

De Paoli, M., Zakharia, A., & **Werstuck, G. H.** (2021). The Role of Estrogen in Insulin Resistance: A Review of Clinical and Preclinical Data. *Am J Pathol*, 191(9), 1490-1498. <https://doi.org/10.1016/j.ajpath.2021.05.011>

De Rubeis, V., Andreacchi, A. T., Sharpe, I., Griffith, L. E., Keown-Stoneman, C. D. G., & **Anderson, L. N.** (2021). Group-based trajectory modeling of body mass index and body size over the life course: A scoping review. *Obesity Science & Practice*, 7(1), 100-128. <https://doi.org/10.1002/osp4.456>

De Rubeis, V., Lee, J., Anwer, M. S., Yoshida-Montezuma, Y., Andreacchi, A. T., Stone, E., Iftikhar, S., Morgenstern, J. D., Rebinsky, R., Neil-Sztramko, S. E., Alvarez, E., Apatu, E., & **Anderson, L. N.** (2021). Impact of disasters, including pandemics, on cardiometabolic outcomes across the life-course: a systematic review. *BMJ Open*, 11(5), e047152. <https://doi.org/10.1136/bmjopen-2020-047152>

Debus, E. S., Nehler, M. R., Govskyeyev, N., Bauersachs, R. M., **Anand, S. S.**, Patel, M. R., Fanelli, F., Capell, W. H., Brackin, T., Hinterreiter, F., Krievins, D., Nault, P., Piffaretti, G., Svetlikov, A., Jaeger, N., Hess, C. N., Sillesen, H. H., Conte, M., Mills, J., . . . Bonaca, M. P. (2021). Effect of Rivaroxaban and Aspirin in Patients With Peripheral Artery Disease Undergoing Surgical Revascularization: Insights From the VOYAGER PAD Trial. *Circulation*, 144(14), 1104-1116. <https://doi.org/10.1161/CIRCULATIONAHA.121.054835>

Debus, E. S., Nehler, M., executive committee of the, V. P. A. D. t., Hiatt, W. R., Bauersachs, R. M., Bonaca, M. P., **Anand, S. S.**, Patel, M. R., Debus, E. S., Nehler, M. R., & Fanelli, F. (2021). Reply to "The VOYAGER PAD Trial in Surgical Perspective: A Debate". *Eur J Vasc Endovasc Surg*, 61(5), 723-724. <https://doi.org/10.1016/j.ejvs.2021.02.051>

Desai, D., Kandasamy, S., Limbachia, J., Zulyniak, M. A., Ritvo, P., **Sherifali, D.**, **Wahi, G.**, **Anand, S. S.**, & **de Souza, R. J.** (2021). Studies to Improve Perinatal Health through Diet and Lifestyle among South Asian Women Living in Canada: A Brief History and Future Research Directions. *Nutrients*, 13(9). <https://doi.org/10.3390/nu13092932>

Desjardins, E. M., Smith, B. K., **Steinberg, G. R.**, & **Brown, R. E.** (2021). Sevoflurane-induced hyperglycemia is attenuated by salsalate in obese insulin-resistant mice. *Can J Anaesth*, 68(7), 972-979. <https://doi.org/10.1007/s12630-021-01935-1>

Dharel, D., Singhal, N., Wood, C., Cieslak, Z., Bacchini, F., Shah, P. S., Ye, X. Y., Alshaikh, B., Canadian Neonatal, N., & Canadian Preterm Birth Network, I. (2021). Rates and Determinants of Mother's Own Milk Feeding in Infants Born Very Preterm. *J Pediatr*, 236, 21-27 e24. <https://doi.org/10.1016/j.jpeds.2021.04.037>

Dial, A. G., Grafham, G. K., Monaco, C. M. F., Voth, J., Brandt, L., **Tarnopolsky, M. A.**, & **Hawke, T. J.** (2021). Alterations in skeletal muscle repair in young adults with type 1 diabetes mellitus. *Am J Physiol Cell Physiol*, 321(5), C876-C883. <https://doi.org/10.1152/ajpcell.00322.2021>

Dial, A. G., Monaco, C. M. F., Grafham, G. K., Patel, T. P., **Tarnopolsky, M. A.**, & **Hawke, T. J.** (2021). Impaired Function and Altered Morphology in the Skeletal Muscles of Adult Men and Women With Type 1 Diabetes. *J Clin Endocrinol Metab*, 106(8), 2405-2422. <https://doi.org/10.1210/clinem/dgab261>  
Diaz-Manera, J., Kishnani, P. S., Kushlaf, H., Ladha, S., Mozaffar, T., Straub, V., Toscano, A., van der Ploeg, A. T., Berger, K. I., Clemens, P. R., Chien, Y. H., Day, J. W., Illarioshkin, S., Roberts, M., Attarian, S., Borges, J. L., Bouhour, F., Choi, Y. C., Erdem-Ozdamar, S., Zagnoli, F. (2021). Safety and efficacy of avalglucosidase alfa versus alglucosidase alfa in patients with late-onset Pompe disease (COMET): a phase 3, randomised, multicentre trial. *The Lancet Neurology*, 20(12), 1012-1026. [https://doi.org/10.1016/s1474-4422\(21\)00241-6](https://doi.org/10.1016/s1474-4422(21)00241-6)

Dizzell, S., **Stearns, J. C.**, Li, J., van Best, N., Bervoets, L., Mommers, M., Penders, J., **Morrison, K. M.**, **Hutton, E. K.**, & Partners, G.-M. C. (2021). Investigating colonization patterns of the infant gut microbiome during the introduction of solid food and weaning from breastmilk: A cohort study protocol. *PLoS One*, 16(4), e0248924. <https://doi.org/10.1371/journal.pone.0248924>

Dodig, D., Fritzler, M. J., Naraghi, A., **Tarnopolsky, M. A.**, & Lu, J. Q. (2022). Immune-mediated necrotizing myopathy after BNT162b2 vaccination in a patient with antibodies against receptor-binding domain of SARS-CoV-2 and signal recognition particle. *Muscle Nerve*, 65(4), E11-E13. <https://doi.org/10.1002/mus.27483>

**Doumouras, A. G.**, Lee, Y., Paterson, J. M., **Gerstein, H. C.**, Shah, B. R., Sivapathasundaram, B., **Tarride, J. E.**, Anvari, M., & Hong, D. (2021). Association Between Bariatric Surgery and Major Adverse Diabetes Outcomes in Patients With Diabetes and Obesity. *JAMA Netw Open*, 4(4), e216820. <https://doi.org/10.1001/jamanetworkopen.2021.6820>

**Doumouras, A. G.**, Wong, J. A., Paterson, J. M., Lee, Y., Sivapathasundaram, B., **Tarride, J. E.**, Thabane, L., Hong, D., Yusuf, S., & Anvari, M. (2021). Bariatric Surgery and Cardiovascular Outcomes in Patients With Obesity and Cardiovascular Disease:: A Population-Based Retrospective Cohort Study. *Circulation*, 143(15), 1468-1480. <https://doi.org/10.1161/CIRCULATIONAHA.120.052386>

Doyon, C. Y., Colley, R. C., Clarke, J., Janssen, I., **Timmons, B. W.**, Tomkinson, G. R., Tremblay, M. S., & Lang, J. J. (2021). Trends in physical fitness among Canadian adults, 2007 to 2017. *Health Rep*, 32(11), 3-15. <https://doi.org/10.25318/82-003-x202101100001-eng>

Drake, J. C., Wilson, R. J., Laker, R. C., Guan, Y., Spaulding, H. R., Nichenko, A. S., Shen, W., Shang, H., Dorn, M. V., Huang, K., Zhang, M., Bandara, A. B., Brisendine, M. H., Kashatus, J. A., Sharma, P. R., Young, A., Gautam, J., Cao, R., Wallrabe, H., . . . **Steinberg, G.**, Yan, Z. (2021). Mitochondria-localized AMPK responds to local energetics and contributes to exercise and energetic stress-induced mitophagy. *Proc Natl Acad Sci U S A*, 118(37). <https://doi.org/10.1073/pnas.2025932118>

Dubern, B., Mosbah, H., **Pigeyre, M.**, Clement, K., & Poitou, C. (2022). Rare genetic causes of obesity: Diagnosis and management in clinical care. *Ann Endocrinol (Paris)*, 83(1), 63-72. <https://doi.org/10.1016/j.ando.2021.12.003>

Duggan, B. M., Tamrakar, A. K., Barra, N. G., Anhê, F. F., Paniccchia, G., Wallace, J. G., Stacey, H. D., Miller, M. S., **Sloboda, D. M.**, & **Schertzer, J. D.** (2021). Gut microbiota-based vaccination engages innate immunity to improve blood glucose control in obese mice. *Molecular Metabolism*. <https://doi.org/10.1101/2021.07.15.452537>

Dunford, E. C., Valentino, S. E., Dubberley, J., Oikawa, S. Y., McGlory, C., Lonn, E., Jung, M. E., **Gibala, M. J.**, **Phillips, S. M.**, & MacDonald, M. J. (2021). Brief Vigorous Stair Climbing Effectively Improves Cardiorespiratory Fitness in Patients With Coronary Artery Disease: A Randomized Trial. *Front Sports Act Living*, 3, 630912. <https://doi.org/10.3389/fspor.2021.630912>



Durrani, R., Friedrich, M. G., Schulze, K. M., Awadalla, P., Balasubramanian, K., Black, S. E., Broet, P., Busseuil, D., Desai, D., Dummer, T., Dick, A., Hicks, J., Iype, T., Kelton, D., Kirpalani, A., Lear, S. A., Leipsic, J., Li, W., McCreary, C. R., **Noseworthy, M.D.**, **Anand, S.S.**, Smith, E. E. (2021). Effect of Cognitive Reserve on the Association of Vascular Brain Injury With Cognition: Analysis of the PURE and CAHMM Studies. *Neurology*, 97(17), e1707-e1716. <https://doi.org/10.1212/WNL.00000000000012765>

Eikelboom, J. W., Bhatt, D. L., Fox, K. A. A., Bosch, J., Connolly, S. J., **Anand, S. S.**, Avezum, A., Berkowitz, S. D., Branch, K. R. H., Dagenais, G. R., Felix, C., Guzik, T. J., Hart, R. G., Maggioni, A. P., Muehlhofer, E., Sharma, M., Shestakovska, O., & Yusuf, S. (2021). Mortality Benefit of Rivaroxaban Plus Aspirin in Patients With Chronic Coronary or Peripheral Artery Disease. *J Am Coll Cardiol*, 78(1), 14-23. <https://doi.org/10.1016/j.jacc.2021.04.083>

Eikelboom, R., & **Anand, S. S.** (2021). A Prevention Approach to Reducing Gender-Based Harassment and Discrimination in Cardiovascular Medicine. *CJC Open*, 3(12 Suppl), S9-S11. <https://doi.org/10.1016/j.cjco.2021.09.007>

Estiar, M. A., Yu, E., Haj Salem, I., Ross, J. P., Mufti, K., Akcimen, F., Leveille, E., Spiegelman, D., Ruskey, J. A., Asayesh, F., Dagher, A., Yoon, G., **Tarnopolsky, M.**, Boycott, K. M., Dupre, N., Dion, P. A., Suchowersky, O., Trempe, J. F., Rouleau, G. A., & Gan-Or, Z. (2021). Evidence for Non-Mendelian Inheritance in Spastic Paraplegia 7. *Mov Disord*, 36(7), 1664-1675. <https://doi.org/10.1002/mds.28528>

Evans, V., Behr, M., Gangwar, A., **Noseworthy, M. D.**, & Kumbhare, D. (2021). Potential Role of MRI Imaging for Myofascial Pain: A Scoping Review for the Clinicians and Theoretical Considerations. *J Pain Res*, 14, 1505-1514. <https://doi.org/10.2147/JPR.S302683>

Feng, Y. Y., Korale-Liyanage, S., Jarde, A., & **McDonald, S. D.** (2021). Psychological or educational eHealth interventions on depression, anxiety or stress following preterm birth: a systematic review. *J Reprod Infant Psychol*, 39(2), 140-152. <https://doi.org/10.1080/02646838.2020.1750576>

Feng, Y. Y., Yu, Z. M., van Blyderveen, S., Schmidt, L., Sword, W., Vanstone, M., Biringer, A., McDonald, H., Beyene, J., & **McDonald, S. D.** (2021). Gestational weight gain outside the 2009 Institute of Medicine recommendations: novel psychological and behavioural factors associated with inadequate or excess weight gain in a prospective cohort study. *BMC Pregnancy Childbirth*, 21(1), 70. <https://doi.org/10.1186/s12884-021-03555-5>

Ferdinandusse, S., McWalter, K., Te Brinke, H., L, I. J., Mooijer, P. M., Ruiten, J. P. N., van Lint, A. E. M., Pras-Raves, M., Wever, E., Millan, F., Guillen Sacoto, M. J., Begtrup, A., **Tarnopolsky, M.**, Brady, L., Ladda, R. L., Sell, S. L., Nowak, C. B., Douglas, J., Tian, C., . . . Vaz, F. M. (2021). Correction to: An autosomal dominant neurological disorder caused by de novo variants in FAR1 resulting in uncontrolled synthesis of ether lipids. *Genet Med*, 23(12), 2467. <https://doi.org/10.1038/s41436-021-01189-8>

Ferrannini, G., **Gerstein, H.**, Colhoun, H. M., Dagenais, G. R., Diaz, R., Dyal, L., Lakshmanan, M., Mellbin, L., Probstfield, J., Riddle, M. C., Shaw, J. E., Avezum, A., Basile, J. N., Cushman, W. C., Jansky, P., Keltai, M., Lanas, F., Leiter, L. A., Lopez-Jaramillo, P., . . . Ryden, L. (2021). Similar cardiovascular outcomes in patients with diabetes and established or high risk for coronary vascular disease treated with dulaglutide with and without baseline metformin. *Eur Heart J*, 42(26), 2565-2573.

<https://doi.org/10.1093/eurheartj/ehaa777>

Ferro, M. A., Lipman, E. L., Van Lieshout, R. J., **Timmons, B.**, Shanahan, L., Gorter, J. W., Georgiades, K., & Boyle, M. (2021). Cohort Profile: Multimorbidity in Children and Youth Across the Life-course (MY LIFE) Study. *J Can Acad Child Adolesc Psychiatry*, 30(2), 104-115.

<https://www.ncbi.nlm.nih.gov/pubmed/33953762>

Fishman, B., Grossman, E., Zucker, I., Orr, O., Lutski, M., Bardugo, A., Bendor, C. D., Leiba, Y., Cukierman-Yaffe, T., Derazne, E., Mosenzon, O., Tzur, D., Beer, Z., Pinhas-Hamiel, O., Fishman, T., Afek, A., Tirosh, A., Raz, I., **Gerstein, H. C.**, & Twig, G. (2021). Adolescent Hypertension and Risk for Early-Onset Type 2 Diabetes: A Nationwide Study of 1.9 Million Israeli Adolescents. *Diabetes Care*, 44(1), e6-e8.

<https://doi.org/10.2337/dc20-1752>

Fitzpatrick-Lewis, D., Ali, M. U., Horvath, S., Nagpal, S., Ghanem, S., & **Sherifali, D.** (2022). Effectiveness of Workplace Interventions to Reduce the Risk for Type 2 Diabetes: A Systematic Review and Meta-Analysis. *Can J Diabetes*, 46(1), 84-98. <https://doi.org/10.1016/j.icjd.2021.04.003>

Foley, K. P., Chen, Y., Barra, N. G., Heal, M., Kwok, K., Tamrakar, A. K., Chi, W., Duggan, B. M., Henriksbo, B. D., Liu, Y., & **Schertzer, J. D.** (2021). Inflammation promotes adipocyte lipolysis via IRE1 kinase. *J Biol Chem*, 296, 100440. <https://doi.org/10.1016/j.jbc.2021.100440>

Fry, A. E., Marra, C., Derrick, A. V., Pickrell, W. O., Higgins, A. T., Te Water Naude, J., McClatchey, M. A., Davies, S. J., Metcalfe, K. A., Tan, H. J., Mohanraj, R., Avula, S., Williams, D., Brady, L. I., Mesterman, R., Tarnopolsky, M. A., Zhang, Y., Yang, Y., Wang, X., . . . Chung, S. K. (2021). Missense variants in the N-terminal domain of the A isoform of FHF2/FGF13 cause an X-linked developmental and epileptic encephalopathy. *Am J Hum Genet*, 108(1), 176-185. <https://doi.org/10.1016/j.ajhg.2020.10.017>

Galipeau, H. J., Caminero, A., Turpin, W., Bermudez-Brito, M., Santiago, A., Libertucci, J., Constante, M., Raygoza Garay, J. A., Rueda, G., Armstrong, S., Clarizio, A., Smith, M. I., **Surette, M. G.**, Bercik, P., Ccc Genetics, E. M. P. R. C., Croitoru, K., & Verdu, E. F. (2021). Novel Fecal Biomarkers That Precede Clinical Diagnosis of Ulcerative Colitis. *Gastroenterology*, 160(5), 1532-1545.

<https://doi.org/10.1053/j.gastro.2020.12.004>

Gatti, A. A., Keir, P. J., **Noseworthy, M. D.**, Beauchamp, M. K., & Maly, M. R. (2021). Hip and ankle kinematics are the most important predictors of knee joint loading during bicycling. *J Sci Med Sport*, 24(1), 98-104. <https://doi.org/10.1016/j.jsams.2020.07.001>

Gatti, A. A., Keir, P. J., **Noseworthy, M. D.**, Beauchamp, M. K., & Maly, M. R. (2022). Equations to Prescribe Bicycle Saddle Height based on Desired Joint Kinematics and Bicycle Geometry. *Eur J Sport Sci*, 22(3), 344-353. <https://doi.org/10.1080/17461391.2021.1902570>

- Gerstein, H. C., & Khurmi, N. S.** (2021). Epeglenatide and Heart and Kidney Outcomes in Type 2 Diabetes. Reply. *N Engl J Med*, 385(22), 2107. <https://doi.org/10.1056/NEJMc2115776>
- Gerstein, H. C., & Ruddy, C. J.** (2021). Insulin Therapy: The Discovery That Shaped a Century. *Can J Diabetes*, 45(8), 798-803. <https://doi.org/10.1016/j.jcid.2021.03.002>
- Gerstein, H. C., Ramasundarahettige, C., & Bangdiwala, S. I.** (2021). Creating Composite Indices From Continuous Variables for Research: The Geometric Mean. *Diabetes Care*, 44(5), e85-e86. <https://doi.org/10.2337/dc20-2446>
- Gerstein, H. C., Sattar, N., Rosenstock, J., Ramasundarahettige, C., Pratley, R., Lopes, R. D., Lam, C. S. P., Khurmi, N. S., Heenan, L., Del Prato, S., Dyal, L., Branch, K., & Investigators, A.-O. T.** (2021). Cardiovascular and Renal Outcomes with Epeglenatide in Type 2 Diabetes. *N Engl J Med*, 385(10), 896-907. <https://doi.org/10.1056/NEJMoa2108269>
- Gerstein, H. C., Smith, E. E., Ramasundarahettige, C., Desai, D., Awadalla, P., Broet, P., Black, S., Dummer, T. J. B., Hicks, J., Moody, A., Tardif, J. C., Teo, K. K., Vena, J., Yusuf, S., Lee, D. S., Friedrich, M. G., & Anand, S. S.** (2021). Diabetes, Brain Infarcts, Cognition, and Small Vessels in the Canadian Alliance for Healthy Hearts and Minds Study. *J Clin Endocrinol Metab*, 106(2), e891-e898. <https://doi.org/10.1210/clinem/dgaa815>
- Gillis, C., & **Phillips, S. M.** (2021). Protein for the Pre-Surgical Cancer Patient: a Narrative Review. *Current Anesthesiology Reports*, 12(1), 138–147. <https://doi.org/10.1007/s40140-021-00494-x>
- Gluais-Dagorn, P., Foretz, M., **Steinberg, G. R.**, Batchuluun, B., Zawistowska-Deniziak, A., Lambooj, J. M., Guigas, B., Carling, D., Monternier, P. A., Moller, D. E., Bolze, S., & Hallakou-Bozec, S. (2022). Direct AMPK Activation Corrects NASH in Rodents Through Metabolic Effects and Direct Action on Inflammation and Fibrogenesis. *Hepatol Commun*, 6(1), 101-119. <https://doi.org/10.1002/hep4.1799>
- Gonzalez-Gronow, M., Gopal, U., **Austin, R. C.**, & Pizzo, S. V. (2021). Glucose-regulated protein (GRP78) is an important cell surface receptor for viral invasion, cancers, and neurological disorders. *IUBMB Life*, 73(6), 843-854. <https://doi.org/10.1002/iub.2502>
- Gouda, P., Ramasundarahettige, C., **Anand, S.**, Muhlhoffer, E., Berkowitz, S., Fox, K. A., Eikelboom, J., & Welsh, R. (2021). Clinical factors associated with peripheral artery disease in patients with documented coronary artery disease: A post hoc analysis of the COMPASS trial. *Atherosclerosis*, 331, 38-44. <https://doi.org/10.1016/j.atherosclerosis.2021.07.003>
- Gould, M. J., Mahmud, F. H., Clarke, A. B. M., McDonald, C., Saibil, F., **Punthakee, Z.**, & Marcon, M. A. (2021). Accuracy of Screening Tests for Celiac Disease in Asymptomatic Patients With Type 1 Diabetes. *Am J Gastroenterol*, 116(7), 1545-1549. <https://doi.org/10.14309/ajg.0000000000001193>
- Grabovac, M., Beltempo, M., Lodha, A., O'Quinn, C., Grigoriu, A., Barrington, K., Yang, J., & **McDonald, S. D.** (2021). Impact of Deferred Cord Clamping on Mortality and Severe Neurologic Injury in Twins Born at <30 Weeks of Gestation. *J Pediatr*, 238, 118-123 e113. <https://doi.org/10.1016/j.jpeds.2021.07.058>

Greenberg, J. H., McArthur, E., Thiessen-Philbrook, H., Zappitelli, M., Wald, R., Kaushal, S., Ng, D. K., Everett, A. D., **Chanchlani, R.**, Garg, A. X., & Parikh, C. R. (2021). Long-term Risk of Hypertension After Surgical Repair of Congenital Heart Disease in Children. *JAMA Netw Open*, 4(4), e215237. <https://doi.org/10.1001/jamanetworkopen.2021.5237>

Guolla, L., **Morrison, K. M.**, & Barr, R. D. (2021). Adiposity in Survivors of Cancer in Childhood: How is it Measured and Why Does it Matter? *J Pediatr Hematol Oncol*, 43(1), 1-11. <https://doi.org/10.1097/MPH.0000000000001988>

Gurm, H., Hirota, J. A., & **Raha, S.** (2021). Cannabinoid Signalling in Immune-Reproductive Crosstalk during Human Pregnancy. *Biomedicines*, 9(3). <https://doi.org/10.3390/biomedicines9030267>

Haq, S., Grondin, J. A., & **Khan, W. I.** (2021). Tryptophan-derived serotonin-kynurenine balance in immune activation and intestinal inflammation. *FASEB J*, 35(10), e21888. <https://doi.org/10.1096/fj.202100702R>

Haq, S., Wang, H., Grondin, J., Banskota, S., Marshall, J. K., Khan, I., Chauhan, U., Cote, F., Kwon, Y. H., Philpott, D., Brumell, J. H., **Surette, M.**, **Steinberg, G. R.**, & **Khan, W. I.** (2021). Disruption of autophagy by increased 5-HT alters gut microbiota and enhances susceptibility to experimental colitis and Crohn's disease. *Sci Adv*, 7(45), eabi6442. <https://doi.org/10.1126/sciadv.abi6442>

Hardee, J. P., Martins, K. J. B., Miotto, P. M., Ryall, J. G., Gehrig, S. M., Reljic, B., Naim, T., Chung, J. D., Trieu, J., Swiderski, K., Philp, A. M., Philp, A., Watt, M. J., Stroud, D. A., Koopman, R., **Steinberg, G. R.**, & Lynch, G. S. (2021). Metabolic remodeling of dystrophic skeletal muscle reveals biological roles for dystrophin and utrophin in adaptation and plasticity. *Mol Metab*, 45, 101157. <https://doi.org/10.1016/j.molmet.2020.101157>

Hart, L., Verburgt, C. M., Wine, E., Zachos, M., Poppen, A., Chavannes, M., Van Limbergen, J., & **Pai, N.** (2021). Nutritional Therapies and Their Influence on the Intestinal Microbiome in Pediatric Inflammatory Bowel Disease. *Nutrients*, 14(1). <https://doi.org/10.3390/nu14010004>

Hernandez-Valdes, D., & **Sadeghi, S.** (2021). Electrochemical Radiofluorination of Small Molecules: New Advances. *Chem Rec*, 21(9), 2397-2410. <https://doi.org/10.1002/tcr.202100086>

Hess, C. N., Debus, E. S., Nehler, M. R., **Anand, S. S.**, Patel, M. R., Szarek, M., Capell, W. H., Hsia, J., Beckman, J. A., Brodmann, M., Diaz, R., Habertheuer, P., Leeper, N. J., Powell, R. J., Sillesen, H., Muehlhofer, E., Berkowitz, S. D., Haskell, L. P., Bauersachs, R. M., & Bonaca, M. P. (2021). Reduction in Acute Limb Ischemia With Rivaroxaban Versus Placebo in Peripheral Artery Disease After Lower Extremity Revascularization: Insights From VOYAGER PAD. *Circulation*, 144(23), 1831-1841. <https://doi.org/10.1161/CIRCULATIONAHA.121.055146>



Hess, C. N., Patel, M. R., Bauersachs, R. M., **Anand, S. S.**, Debus, E. S., Nehler, M. R., Fanelli, F., Yeh, R. W., Secemsky, E. A., Beckman, J. A., Mauri, L., Govsyeyev, N., Capell, W. H., Brackin, T., Berkowitz, S. D., Muehlhofer, E., Haskell, L. P., Hiatt, W. R., & Bonaca, M. P. (2021). Safety and Effectiveness of Paclitaxel Drug-Coated Devices in Peripheral Artery Revascularization: Insights From VOYAGER PAD. *J Am Coll Cardiol*, 78(18), 1768-1778. <https://doi.org/10.1016/j.jacc.2021.08.052>

Hevia-Larrain, V., Gualano, B., Longobardi, I., Gil, S., Fernandes, A. L., Costa, L. A. R., Pereira, R. M. R., Artioli, G. G., **Phillips, S. M.**, & Roschel, H. (2021). High-Protein Plant-Based Diet Versus a Protein-Matched Omnivorous Diet to Support Resistance Training Adaptations: A Comparison Between Habitual Vegans and Omnivores. *Sports Med*, 51(6), 1317-1330. <https://doi.org/10.1007/s40279-021-01434-9>

Hiersch, L., Ray, J. G., Barrett, J., Berger, H., Geary, M., **McDonald, S. D.**, Diong, C., Gandhi, S., Guan, J., Murray-Davis, B., Melamed, N., & Doh, N. E. T. (2021). Maternal cardiovascular disease after twin pregnancies complicated by hypertensive disorders of pregnancy: a population-based cohort study. *CMAJ*, 193(37), E1448-E1458. <https://doi.org/10.1503/cmaj.202837>

Hiersch, L., Shah, B. R., Berger, H., Geary, M., **McDonald, S. D.**, Murray-Davis, B., Halperin, I., Retnakaran, R., Barrett, J., Melamed, N., for, D.-N., & Investigators, S. (2021). Oral Glucose Tolerance Test Results in Pregnancy Can Be Used to Individualize the Risk of Future Maternal Type 2 Diabetes Mellitus in Women With Gestational Diabetes Mellitus. *Diabetes Care*, 44(8), 1860-1867. <https://doi.org/10.2337/dc21-0659>

Hiersch, L., Shah, B. R., Berger, H., Geary, M., **McDonald, S. D.**, Murray-Davis, B., Guan, J., Halperin, I., Retnakaran, R., Barrett, J., Melamed, N., & for Doh-Net, S. I. (2021). DEVELOPING twin-specific 75-g oral glucose tolerance test diagnostic thresholds for gestational diabetes based on the risk of future maternal diabetes: a population-based cohort study. *BJOG*, 128(12), 1975-1985. <https://doi.org/10.1111/1471-0528.16773>

Hiersch, L., Shah, P. S., Khurshid, F., Masse, E., Murphy, K., **McDonald, S. D.**, Carson, G., Barrett, J., Melamed, N., Canadian Neonatal Network, I., & the Canadian Preterm Birth Network, I. (2021). Mode of delivery and neonatal outcomes in extremely preterm Vertex/nonVertex twins. *Am J Obstet Gynecol*, 224(6), 613 e611-613 e610. <https://doi.org/10.1016/j.ajog.2020.12.002>

Hill, L., Popov, J., Figueiredo, M., Caputi, V., Hartung, E., Moshkovich, M., & **Pai, N.** (2021). Protocol for a systematic review on the role of the gut microbiome in paediatric neurological disorders. *Acta Neuropsychiatr*, 33(4), 211-216. <https://doi.org/10.1017/neu.2021.8>

Hill, L., Sharma, R., Hart, L., Popov, J., Moshkovich, M., & **Pai, N.** (2021). The neonatal microbiome in utero and beyond: perinatal influences and long-term impacts. *Journal of Laboratory Medicine*, 45(6), 275–291. <https://doi.org/10.1515/labmed-2021-0131>

Hochart, A., Neve, V., Drumez, E., **Pigeyre, M.**, Mallart, A., Monaca, C., Le Rouzic, O., Gueorguieva, I., & Matran, R. (2021). Dramatic impact of morbid obesity on child lung development. *Arch Pediatr*, 28(3), 186-190. <https://doi.org/10.1016/j.arcped.2021.02.016>

Homann, C. M., Rossel, C. A. J., Dizzell, S., Bervoets, L., Simioni, J., Li, J., Gunn, E., **Surette, M. G.**, de Souza, R. J., Mommers, M., **Hutton, E. K.**, **Morrison, K. M.**, Penders, J., van Best, N., & **Stearns, J. C.** (2021). Infants' First Solid Foods: Impact on Gut Microbiota Development in Two Intercontinental Cohorts. *Nutrients*, 13(8). <https://doi.org/10.3390/nu13082639>

Hsia, J., Szarek, M., **Anand, S.**, Patel, M. R., Debus, S., Berkowitz, S. D., Muehlhofer, E., Haskell, L. P., Bauersachs, R. M., & Bonaca, M. P. (2021). Rivaroxaban in Patients With Recent Peripheral Artery Revascularization and Renal Impairment: The VOYAGER PAD Trial. *J Am Coll Cardiol*, 78(7), 757-759. <https://doi.org/10.1016/j.jacc.2021.06.021>

Huynh, A., Arnold, D. M., Smith, J. W., Moore, J. C., Zhang, A., Chagla, Z., Harvey, B. J., Stacey, H. D., Ang, J. C., Clare, R., Ivetic, N., **Chetty, V. T.**, Bowdish, D. M. E., Miller, M. S., Kelton, J. G., & Nazy, I. (2021). Characteristics of Anti-SARS-CoV-2 Antibodies in Recovered COVID-19 Subjects. *Viruses*, 13(4). <https://doi.org/10.3390/v13040697>

Inskip, H., Godfrey, K., Cooper, C., Hanson, M., Fall, C., Baird, J., Barker, M., **Sloboda, D.**, & Poston, L. (2021). Re: "Invited Commentary: The Disillusionment of Developmental Origins of Health and Disease (Dohad) Epidemiology". *Am J Epidemiol*, 190(1), 185. <https://doi.org/10.1093/aje/kwaa100>

Isayama, T., O'Reilly, D., Beyene, J., Lee, S. K., Shah, P. S., Guttman, A., & **McDonald, S. D.** (2021). Admissions and Emergency Visits by Late Preterm Singletons and Twins in the First 5 Years: A Population-Based Cohort Study. *Am J Perinatol*, 38(8), 796-803. <https://doi.org/10.1055/s-0039-3402718>

James, M. E., King-Dowling, S., Graham, J. D., Missiuna, C., **Timmons, B. W.**, & Cairney, J. (2022). Effects of Comorbid Developmental Coordination Disorder and Symptoms of Attention Deficit Hyperactivity Disorder on Physical Activity in Children Aged 4-5 Years. *Child Psychiatry Hum Dev*, 53(4), 786-796. <https://doi.org/10.1007/s10578-021-01155-0>

Jenkins, D. J. A., Jayalath, V. H., Choo, V. L., Viguiliouk, E., Kendall, C. W. C., Srichaikul, K., Mirrahimi, A., Bernstein, C. N., Chang, T. M., Gold, P., Haynes, R. B., Hollenberg, M. D., Lozano, A. M., Posner, B. I., Ronald, A. R., Vranic, M., Wang, Y. T., Chiavaroli, L., **de Souza, R. J.**, . . . Sievenpiper, J. L. (2021). Does conventional early life academic excellence predict later life scientific discovery? An assessment of the lives of great medical innovators. *QJM*, 114(6), 381-389. <https://doi.org/10.1093/qjmed/hcaa210>

Joanisse, S., McKendry, J., Lim, C., Nunes, E. A., Stokes, T., Mcleod, J. C., & **Phillips, S. M.** (2021). Understanding the effects of nutrition and post-exercise nutrition on skeletal muscle protein turnover: Insights from stable isotope studies. *Clinical Nutrition Open Science*, 36, 56-77. <https://doi.org/10.1016/j.nutos.2021.01.005>

Johnstone, J., Meade, M., Lauzier, F., Marshall, J., Duan, E., Dionne, J., Arabi, Y. M., Heels-Ansdell, D., Thabane, L., Lamarche, D., **Surette, M.**, Zytaruk, N., Mehta, S., Dodek, P., McIntyre, L., English, S., Rochweg, B., Karachi, T., Henderson, W., . . . the Canadian Critical Care Trials, G. (2021). Effect of Probiotics on Incident Ventilator-Associated Pneumonia in Critically Ill Patients: A Randomized Clinical Trial. *JAMA*, 326(11), 1024-1033. <https://doi.org/10.1001/jama.2021.13355>

Josan, C., Kakar, S., & **Raha, S.** (2021). Matrigel(R) enhances 3T3-L1 cell differentiation. *Adipocyte*, 10(1), 361-377. <https://doi.org/10.1080/21623945.2021.1951985>

Joseph, K. S., Lee, L., Arbour, L., Auger, N., Darling, E. K., Evans, J., Little, J., **McDonald, S. D.**, Moore, A., Murphy, P. A., Ray, J. G., Scott, H., Shah, P., VanDenHof, M., & Kramer, M. S. (2021). Stillbirth in Canada: anachronistic definition and registration processes impede public health surveillance and clinical care. *Can J Public Health*, 112(4), 766-772. <https://doi.org/10.17269/s41997-021-00483-x>

Juneja, G. K., Castelo, M., Yeh, C. H., Cerroni, S. E., Hansen, B. E., Chessum, J. E., Abraham, J., Cani, E., Dwivedi, D. J., Fraser, D. D., Slessarev, M., Martin, C., McGilvray, S., Gross, P. L., Liaw, P. C., Weitz, J. I., Kim, P. Y., & investigators, C.-B. (2021). Biomarkers of coagulation, endothelial function, and fibrinolysis in critically ill patients with COVID-19: A single-center prospective longitudinal study. *J Thromb Haemost*, 19(6), 1546-1557. <https://doi.org/10.1111/jth.15327>

Kandasamy, S., Nguyen, L., Desai, D., **Anand, S. S.**, **Sherifali, D.**, & **de Souza, R. J.** (2021). Barriers to, and Facilitators of, Lifestyle Changes to Prevent Gestational Diabetes: An Interpretive Description of South Asian Women and Health-Care Providers Living and Working in Southern Ontario, Canada. *Can J Diabetes*, 45(2), 144-154. <https://doi.org/10.1016/j.jcid.2020.07.001>

Kaplovitch, E., Collins, A., McClure, G., Tse, R., Bhagirath, V., Chan, N., Szalay, D., Harlock, J., & **Anand, S. S.** (2021). Medical Therapy Following Urgent/Emergent Revascularization in Peripheral Artery Disease Patients (Canadian Acute Limb Ischemia Registry [CANALISE I]). *CJC Open*, 3(11), 1325-1332. <https://doi.org/10.1016/j.cjco.2021.06.006>

Kaplovitch, E., Eikelboom, J. W., Dyal, L., Aboyans, V., Abola, M. T., Verhamme, P., Avezum, A., Fox, K. A. A., Berkowitz, S. D., Bangdiwala, S. I., Yusuf, S., & **Anand, S. S.** (2021). Rivaroxaban and Aspirin in Patients With Symptomatic Lower Extremity Peripheral Artery Disease: A Subanalysis of the COMPASS Randomized Clinical Trial. *JAMA Cardiol*, 6(1), 21-29. <https://doi.org/10.1001/jamacardio.2020.4390>

Kaur, H., & **Werstuck, G. H.** (2021). The Effect of Testosterone on Cardiovascular Disease and Cardiovascular Risk Factors in Men: A Review of Clinical and Preclinical Data. *CJC Open*, 3(10), 1238-1248. <https://doi.org/10.1016/j.cjco.2021.05.007>

Kavsak, P. A., Clark, L., Martin, J., Mark, C. T., **Pare, G.**, Mondoux, S., **Chetty, V. T.**, Ainsworth, C., & Worster, A. (2021). Acute Phase Response and Non-Reproducible Elevated Concentrations with a High-Sensitivity Cardiac Troponin I Assay. *J Clin Med*, 10(5). <https://doi.org/10.3390/jcm10051014>

Kavsak, P. A., Mondoux, S. E., de Wit, K., Rochweg, B., Main, C., Yamamura, D., **Pare, G.**, Ma, J., Perri, D., Sherbino, J., & Worster, A. (2021). Admission High-Sensitivity Cardiac Troponin vs a Biochemical Score for Predicting Mortality in Patients With COVID-19. *CJC Open*, 3(1), 130-131. <https://doi.org/10.1016/j.cjco.2020.10.008>

Kavsak, P. A., Mondoux, S. E., Martin, J., Hewitt, M. K., Clark, L., Caruso, N., Mark, C. T., **Chetty, V. T.**, Ainsworth, C., & Worster, A. (2021). Disagreement between Cardiac Troponin Tests Yielding a Higher Incidence of Myocardial Injury in the Emergency Setting. *J Cardiovasc Dev Dis*, 8(3).

<https://doi.org/10.3390/jcdd8030031>

Kavsak, P. A., Um, K., Mondoux, S., **Pare, G.**, Ainsworth, C., & Worster, A. (2021). Important Differences Between Manufacturers When Transitioning From a Contemporary Cardiac Troponin Assay to a High-Sensitivity Cardiac Troponin Assay. *CJC Open*, 3(6), 841-842. <https://doi.org/10.1016/j.cjco.2021.01.017>

Ken-Dror, G., Cotlarciuc, I., Martinelli, I., Grandone, E., Hiltunen, S., Lindgren, E., Margaglione, M., Duchez, V. L. C., Triquenot, A. B., Zedde, M., Mancuso, M., Ruigrok, Y. M., Marjot, T., Worrall, B., Majersik, J. J., Metso, T. M., Putaala, J., Haapaniemi, E., Zuurbier, S. M., **Pare, G.**, . . . Sharma, P. (2021). Genome-Wide Association Study Identifies First Locus Associated with Susceptibility to Cerebral Venous Thrombosis. *Ann Neurol*, 90(5), 777-788. <https://doi.org/10.1002/ana.26205>

Kennedy, K. M., Bellissimo, C. J., Breznik, J. A., Barrett, J., Braun, T., Bushman, F. D., De Goffau, M., Elovitz, M. A., Heimesaat, M. M., Konnikova, L., Koren, O., Parry, S., Rossi, L., Segata, N., Simmons, R. A., **Surette, M. G.**, Walter, J., & **Sloboda, D. M.** (2021). Over-celling fetal microbial exposure. *Cell*, 184(24), 5839-5841. <https://doi.org/10.1016/j.cell.2021.10.026>

Kennedy, K. M., Gerlach, M. J., Adam, T., Heimesaat, M. M., Rossi, L., **Surette, M. G.**, **Sloboda, D. M.**, & Braun, T. (2021). Fetal meconium does not have a detectable microbiota before birth. *Nat Microbiol*, 6(7), 865-873. <https://doi.org/10.1038/s41564-021-00904-0>

Kernohan, K. D., McMillan, H. J., Yeh, E., Lacaria, M., Kowalski, M., Campbell, C., Dowling, J. J., Gonorazky, H., Marcadier, J., **Tarnopolsky, M. A.**, Vajsar, J., Mackenzie, A., & Chakraborty, P. (2021). Ontario Newborn Screening for Spinal Muscular Atrophy: The First Year. *Can J Neurol Sci*, 1-3. <https://doi.org/10.1017/cjn.2021.231>

Khan, A. A., AbuAlrob, H., **Punthakee, Z.**, Shrayyef, M., Werfalli, R. E., Kassem, H. A., Braga, M., Millar, A., Hussain, S., Iqbal, S., Khan, T., Paul, T., Van Uum, S., & Young, J. E. M. (2021). Canadian national hypoparathyroidism registry: an overview of hypoparathyroidism in Canada. *Endocrine*, 72(2), 553-561. <https://doi.org/10.1007/s12020-021-02629-w>

Khlevner, J., Rosen, R., Ambartsumyan, L., Lusman, S. S., Rosen, J. M., Yacob, D., Mousa, H., Nurko, S., Di Lorenzo, C., Boruta, M., **Ratcliffe, E. M.**, Feinstein, L., Snyder, J., Wood, R. J., Graham, K., Saps, M., Gyawali, C. P., Rodriguez, L., & Belkind-Gerson, J. (2021). Development of Entrustable Professional Activities and Standards in Training in Pediatric Neurogastroenterology and Motility: North American Society for Pediatric Gastroenterology, Hepatology and Nutrition and American Neurogastroenterology and Motility Society Position Paper. *J Pediatr Gastroenterol Nutr*, 72(1), 168-180. <https://doi.org/10.1097/MPG.0000000000002965>

Gluck, G. E. G., Yoo, J. A., Sakarya, E. H., & **Trigatti, B. L.** (2021). Good Cholesterol Gone Bad? HDL and COVID-19. *Int J Mol Sci*, 22(19). <https://doi.org/10.3390/ijms221910182>

Konig, M., Riddle, M. C., Colhoun, H. M., Branch, K. R., Atisso, C. M., Lakshmanan, M. C., Mody, R., **Raha, S., & Gerstein, H. C.** (2021). Exploring potential mediators of the cardiovascular benefit of dulaglutide in type 2 diabetes patients in REWIND. *Cardiovasc Diabetol*, 20(1), 194. <https://doi.org/10.1186/s12933-021-01386-4>

Krantz, M. J., Debus, S. E., Hsia, J., Patel, M. R., **Anand, S. S.**, Nehler, M. R., Hess, C. N., Capell, W. H., Bracken, T., Szarek, M., Matyas, L., Krievins, D. K., Nault, P., Stefanov, S., Haskell, L. P., Berkowitz, S. D., Muehlhofer, E., Hiatt, W. R., Bauersachs, R. M., & Bonaca, M. P. (2021). Low-dose rivaroxaban plus aspirin in older patients with peripheral artery disease undergoing acute limb revascularization: insights from the VOYAGER PAD trial. *Eur Heart J*, 42(39), 4040-4048. <https://doi.org/10.1093/eurheartj/ehab408>

Kuganathan, A., Slifierz, M., **Anderson, L. N.**, Alvarez, E., & Apatu, E. (2021). The Design of a Master of Public Health Professional Development Course During the COVID-19 Pandemic: Application of the Salmon Model. *Pedagogy in Health Promotion*, 8(2), 104–110. <https://doi.org/10.1177/23733799211021453>

Kyle, B. D., Agbor, T. A., Sharif, S., Chauhan, U., Marshall, J., Halder, S. L. S., Ip, S., & **Khan, W. I.** (2021). Fecal Calprotectin, CRP and Leucocytes in IBD Patients: Comparison of Biomarkers With Biopsy Results. *J Can Assoc Gastroenterol*, 4(2), 84-90. <https://doi.org/10.1093/jcag/gwaa009>

Lali, R., Chong, M., Omid, A., Mohammadi-Shemirani, P., Le, A., Cui, E., & **Pare, G.** (2021). Calibrated rare variant genetic risk scores for complex disease prediction using large exome sequence repositories. *Nat Commun*, 12(1), 5852. <https://doi.org/10.1038/s41467-021-26114-0>

Lau, T. C., Fiebig-Comyn, A. A., Shaler, C. R., McPhee, J. B., Coombes, B. K., & **Schertzer, J. D.** (2021). Low dietary fiber promotes enteric expansion of a Crohn's disease-associated pathobiont independent of obesity. *Am J Physiol Endocrinol Metab*, 321(3), E338-E350. <https://doi.org/10.1152/ajpendo.00134.2021>

Lebeau, P. F., Wassef, H., Byun, J. H., Platko, K., Ason, B., Jackson, S., Dobroff, J., Shetterly, S., Richards, W. G., Al-Hashimi, A. A., Won, K. D., Mbikay, M., Prat, A., Tang, A., **Pare, G.**, Pasqualini, R., Seidah, N. G., Arap, W., Chretien, M., & **Austin, R. C.** (2021). The loss-of-function PCSK9Q152H variant increases ER chaperones GRP78 and GRP94 and protects against liver injury. *J Clin Invest*, 131(2). <https://doi.org/10.1172/JCI128650>

Lee, J., Muratov, S., Tarride, J. E., Paterson, J. M., Thavorn, K., Mbuagbaw, L., Gomes, T., Khuu, W., Seow, H., Thabane, L., & Holbrook, A. (2021). Medication use and its impact on high-cost health care users among older adults: protocol for the population-based matched cohort HiCOSTT study. *CMAJ Open*, 9(1), E44-E52. <https://doi.org/10.9778/cmajo.20190196>

Lee, M. M. Y., Kristensen, S. L., **Gerstein, H. C.**, McMurray, J. J. V., & Sattar, N. (2022). Cardiovascular and mortality outcomes with GLP-1 receptor agonists in patients with type 2 diabetes: A meta-analysis with the FREEDOM cardiovascular outcomes trial. *Diabetes Metab Syndr*, 16(1), 102382. <https://doi.org/10.1016/j.dsx.2021.102382>



Lee, Y., **Doumouras, A. G.**, Yu, J., Aditya, I., Gmora, S., Anvari, M., & Hong, D. (2021). Laparoscopic Sleeve Gastrectomy Versus Laparoscopic Roux-en-Y Gastric Bypass: A Systematic Review and Meta-analysis of Weight Loss, Comorbidities, and Biochemical Outcomes From Randomized Controlled Trials. *Ann Surg*, 273(1), 66-74. <https://doi.org/10.1097/SLA.0000000000003671>

Lemay, J. A., Yamamoto, M., Kroezen, Z., Shanmuganathan, M., Ly, R., Hart, L., **Pai, N.**, & Britz-McKibbin, P. (2021). Lyophilized fecal short-chain fatty acid and electrolyte determination by capillary electrophoresis with indirect UV detection for assessment of pediatric inflammatory bowel disease. *J Pharm Biomed Anal*, 192, 113658. <https://doi.org/10.1016/j.jpba.2020.113658>

Lemire, G., Ito, Y. A., Marshall, A. E., Chrestian, N., Stanley, V., Brady, L., **Tarnopolsky, M.**, Curry, C. J., Hartley, T., Mears, W., Derksen, A., Rioux, N., Laflamme, N., Hutchison, H. T., Pais, L. S., Zaki, M. S., Sultan, T., Dane, A. D., Care4Rare Canada, C., . . . Boycott, K. M. (2021). ABHD16A deficiency causes a complicated form of hereditary spastic paraplegia associated with intellectual disability and cerebral anomalies. *Am J Hum Genet*, 108(10), 2017-2023. <https://doi.org/10.1016/j.ajhg.2021.09.005>

Leon-Coria, A., Kumar, M., Workentine, M., Moreau, F., **Surette, M.**, & Chadee, K. (2021). Muc2 Mucin and Nonmucin Microbiota Confer Distinct Innate Host Defense in Disease Susceptibility and Colonic Injury. *Cell Mol Gastroenterol Hepatol*, 11(1), 77-98. <https://doi.org/10.1016/j.jcmgh.2020.07.003>

Leong, D. P., **Pigeyre, M.**, & **Pare, G.** (2021). Editorial Comment. *J Urol*, 206(4), 958-959. <https://doi.org/10.1097/JU.0000000000001879.02>

Lepak, A. J., Buys, A., Stevens, L., LeClair-Netzel, M., **Anderson, L.**, Osman, F., Brennan, M. B., Bartels, C. M., & Safdar, N. (2021). COVID-19 in Health Care Personnel: Significance of Health Care Role, Contact History, and Symptoms in Those Who Test Positive for SARS-CoV-2 Infection. *Mayo Clin Proc*, 96(9), 2312-2322. <https://doi.org/10.1016/j.mayocp.2021.06.019>

Li, X., Vanderloo, L. M., Maguire, J. L., Keown-Stoneman, C. D. G., Aglipay, M., **Anderson, L. N.**, Cost, K. T., Charach, A., Vanderhout, S. M., Birken, C. S., & Collaboration, T. A. K. (2021). Public health preventive measures and child health behaviours during COVID-19: a cohort study. *Can J Public Health*, 112(5), 831-842. <https://doi.org/10.17269/s41997-021-00549-w>

Liang, Y., Zhu, J., Liu, L., **Anand, S. S.**, Connolly, S. J., Bosch, J., Guzik, T. J., O'Donnell, M., Dagenais, G. R., Fox, K. A., Shestakovska, O., Berkowitz, S. D., Muehlhofer, E., Keller, L., Yusuf, S., Eikelboom, J. W., & Investigators, C. (2021). Efficacy and safety of rivaroxaban plus aspirin in women and men with chronic coronary or peripheral artery disease. *Cardiovasc Res*, 117(3), 942-949. <https://doi.org/10.1093/cvr/cvaa100>

Lim, C., Dunford, E. C., Valentino, S. E., Oikawa, S. Y., McGlory, C., Baker, S. K., Macdonald, M. J., & **Phillips, S. M.** (2021). Both Traditional and Stair Climbing-based HIIT Cardiac Rehabilitation Induce Beneficial Muscle Adaptations. *Med Sci Sports Exerc*, 53(6), 1114-1124. <https://doi.org/10.1249/MSS.0000000000002573>

- Lipworth, H., Melamed, N., Berger, H., Geary, M., **McDonald, S. D.**, Murray-Davis, B., Murphy, K. E., Redelmeier, D. A., Yoon, E. W., Barrett, J. F. R., Ram, M., Diabetes, O., & Hypertension In Pregnancy Research Network, I. (2021). Maternal weight gain and pregnancy outcomes in twin gestations. *Am J Obstet Gynecol*, 225(5), 532 e531-532 e512. <https://doi.org/10.1016/j.ajog.2021.04.260>
- Lochmuller, H., Behin, A., Tournev, I., **Tarnopolsky, M.**, Horvath, R., Pogoryelova, O., Shah, J., Koutsoukos, T., Skrinar, A., Kakkis, E., Bedrosian, C. L., & Mozaffar, T. (2021). Results from a 3-year Non-interventional, Observational Disease Monitoring Program in Adults with GNE Myopathy. *J Neuromuscul Dis*, 8(2), 225-234. <https://doi.org/10.3233/JND-200565>
- Longmuir, P. E., Wang, S., **Timmons, B. W.**, Mondal, T., Cinanni, N. L., Di Cristofaro, N. A., Dillenburg, R., Adamo, K., Tremblay, M. S., & Lee, S. (2022). Inactive Lifestyles Among Young Children With Innocent Murmurs or Congenital Heart Disease, Regardless of Disease Severity or Treatment. *Can J Cardiol*, 38(1), 59-67. <https://doi.org/10.1016/j.cjca.2021.09.014>
- Lu, C. H., Van Blyderveen, S., Yu, Z. M., Vanstone, M., Biringer, A., Sword, W., Schmidt, L., & **McDonald, S. D.** (2021). A goal set too high: factors associated with planning excess gestational weight gain in a prospective cohort study. *J Matern Fetal Neonatal Med*, 1-9. <https://doi.org/10.1080/14767058.2021.1937988>
- Lu, J. Q., & **Tarnopolsky, M. A.** (2021). Mitochondrial neuropathy and neurogenic features in mitochondrial myopathy. *Mitochondrion*, 56, 52-61. <https://doi.org/10.1016/j.mito.2020.11.005>
- Lucia, A., Martinuzzi, A., Nogales-Gadea, G., Quinlivan, R., Reason, S., & International Association for Muscle Glycogen Storage Disease study, g. (2021). Clinical practice guidelines for glycogen storage disease V & VII (McArdle disease and Tarui disease) from an international study group. *Neuromuscul Disord*, 31(12), 1296-1310. <https://doi.org/10.1016/j.nmd.2021.10.006>
- Lutski, M., Zucker, I., Bardugo, A., Bendor, C. D., Derazne, E., Tzur, D., Novick, D., Raz, I., Pinhas-Hamiel, O., Mosenzon, O., Afek, A., **Gerstein, H. C.**, Twig, G., & Cukierman-Yaffe, T. (2021). Adolescent cognitive function and incident early-onset type 2 diabetes. *EClinicalMedicine*, 41, 101138. <https://doi.org/10.1016/j.eclinm.2021.101138>
- Luu, J. M., Sergeant, A. K., **Anand, S. S.**, Desai, D., Schulze, K., Knoppers, B. M., Zawati, M. H., Smith, E. E., Moody, A. R., Black, S. E., Larose, E., Marcotte, F., Kleiderman, E., Tardif, J. C., Lee, D. S., Friedrich, M. G., & Investigators, C. S. (2021). The impact of reporting magnetic resonance imaging incidental findings in the Canadian alliance for healthy hearts and minds cohort. *BMC Med Ethics*, 22(1), 145. <https://doi.org/10.1186/s12910-021-00706-3>
- MacColl, C. E., **Pare, G.**, Salehi, A., Hodgson, N., & Williams, P. (2021). Postneoadjuvant Pure and Predominantly Pure Intralymphatic Breast Carcinoma: Case Series and Literature Review. *Am J Surg Pathol*, 45(4), 537-542. <https://doi.org/10.1097/PAS.0000000000001610>

Machipisa, T., Chong, M., Muhamed, B., Chishala, C., Shaboodien, G., Pandie, S., de Vries, J., Laing, N., Joachim, A., Daniels, R., Ntsekhe, M., Hugo-Hamman, C. T., Gitura, B., Ogendo, S., Lwabi, P., Okello, E., Damasceno, A., Novela, C., Mocumbi, A. O., . . . **Pare, G.** (2021). Association of Novel Locus With Rheumatic Heart Disease in Black African Individuals: Findings From the RHDGen Study. *JAMA Cardiol*, 6(9), 1000-1011. <https://doi.org/10.1001/jamacardio.2021.1627>

MacNeil, L. G., **Tarnopolsky, M. A.**, & Crane, J. D. (2021). Acute, Exercise-Induced Alterations in Cytokines and Chemokines in the Blood Distinguish Physically Active and Sedentary Aging. *J Gerontol A Biol Sci Med Sci*, 76(5), 811-818. <https://doi.org/10.1093/gerona/glaa310>

Magee, L. A., Singer, J., Lee, T., Rey, E., Asztalos, E., **Hutton, E.**, Helewa, M., Logan, A. G., Ganzevoort, W., Welch, R., Thornton, J. G., Woo Kinshella, M. L., Green, M., Tsigas, E., von Dadelszen, P., & Group, C. S. (2021). The impact of pre-eclampsia definitions on the identification of adverse outcome risk in hypertensive pregnancy - analyses from the CHIPS trial (Control of Hypertension in Pregnancy Study). *BJOG*, 128(8), 1373-1382. <https://doi.org/10.1111/1471-0528.16602>

Mahant, S., **Wahi, G.**, Bayliss, A., Giglia, L., Kanani, R., Pound, C. M., Sakran, M., Kozlowski, N., Breen-Reid, K., Arafah, D., Moretti, M. E., Agarwal, A., Barrowman, N., Willan, A. R., Schuh, S., Parkin, P. C., & Canadian Paediatric Inpatient Research, N. (2021). Intermittent vs Continuous Pulse Oximetry in Hospitalized Infants With Stabilized Bronchiolitis: A Randomized Clinical Trial. *JAMA Pediatr*, 175(5), 466-474. <https://doi.org/10.1001/jamapediatrics.2020.6141>

Mahmoodi, B. K., Eriksson, N., Ross, S., Claassens, D. M. F., Asselbergs, F. W., Meijer, K., Siegbahn, A., James, S., **Pare, G.**, Wallentin, L., & Ten Berg, J. M. (2021). Factor V Leiden and the Risk of Bleeding in Patients With Acute Coronary Syndromes Treated With Antiplatelet Therapy: Pooled Analysis of 3 Randomized Clinical Trials. *J Am Heart Assoc*, 10(17), e021115. <https://doi.org/10.1161/JAHA.120.021115>

Marriott, K., Chopp-Hurley, J., Loukov, D., Karampatos, S., Kuntz, A. B., Wiebenga, E. G., Stratford, P. W., **Noseworthy, M. D.**, Bowdish, D. M. E., & Maly, M. R. (2021). Muscle strength gains after strengthening exercise explained by reductions in serum inflammation in women with knee osteoarthritis. *Clin Biomech (Bristol, Avon)*, 86, 105381. <https://doi.org/10.1016/j.clinbiomech.2021.105381>

Martinez-Pena, A. A., Lee, K., Petrik, J. J., Hardy, D. B., & **Holloway, A. C.** (2021). Gestational exposure to Delta(9)-THC impacts ovarian follicular dynamics and angiogenesis in adulthood in Wistar rats. *J Dev Orig Health Dis*, 12(6), 865-869. <https://doi.org/10.1017/S2040174420001282>

Martinez-Pena, A. A., Perono, G. A., Gritis, S. A., Sharma, R., Selvakumar, S., Walker, O. S., Gurm, H., **Holloway, A. C.**, & **Raha, S.** (2021). The Impact of Early Life Exposure to Cannabis: The Role of the Endocannabinoid System. *Int J Mol Sci*, 22(16). <https://doi.org/10.3390/ijms22168576>

Marvin, C. H., Tomy, G. T., Thomas, P. J., **Holloway, A.**, Sandau, C. D., Idowu, I., & Xia, Z. (2021). Addition to "Considerations for Prioritization of Polycyclic Aromatic Compounds as Environmental Contaminants". *Environ Sci Technol*, 55(5), 3447. <https://doi.org/10.1021/acs.est.0c08478>

Mathewson, K. J., McGowan, P. O., de Vega, W. C., **Morrison, K. M.**, Saigal, S., Van Lieshout, R. J., & Schmidt, L. A. (2021). Cumulative risks predict epigenetic age in adult survivors of extremely low birth weight. *Dev Psychobiol*, 63 Suppl 1, e22222. <https://doi.org/10.1002/dev.22222>

Mayhew, A. J., **Phillips, S. M.**, Sohel, N., Thabane, L., McNicholas, P. D., **de Souza, R. J.**, Parise, G., & Raina, P. (2021). Methodological Issues and the Impact of Age Stratification on the Proportion of Participants with Low Appendicular Lean Mass When Adjusting for Height and Fat Mass Using Linear Regression: Results from the Canadian Longitudinal Study on Aging. *J Frailty Aging*, 10(2), 150-155. <https://doi.org/10.14283/jfa.2020.48>

Mbuagbaw, L., Logie, C. H., Thabane, L., Smaill, F., Smieja, M., Burchell, A. N., Rachlis, B., **Tarride, J. E.**, Kroch, A., Mazzulli, T., Alvarez, E., Lawson, D. O., Nguyen, F., Perez, R., & Seow, H. (2021). The impact of routine HIV drug resistance testing in Ontario: A controlled interrupted time series study. *PLoS One*, 16(4), e0246766. <https://doi.org/10.1371/journal.pone.0246766>

McCarthy, D. G., Bostad, W., Powley, F. J., Little, J. P., Richards, D. L., & **Gibala, M. J.** (2021). Increased cardiorespiratory stress during submaximal cycling after ketone monoester ingestion in endurance-trained adults. *Appl Physiol Nutr Metab*, 46(8), 986-993. <https://doi.org/10.1139/apnm-2020-0999>

McClure, G. R., Chan, N., Kaplovitch, E., Bhagirath, V., & **Anand, S. S.** (2021). Prevention and Management of Urgent/Emergent Limb Ischemia. *Curr Cardiol Rep*, 23(5), 41. <https://doi.org/10.1007/s11886-021-01472-9>

McClure, G. R., Kaplovitch, E., Chan, N., Bhagirath, V., Harlock, J., Szalay, D., & **Anand, S. S.** (2021). A National Canadian Survey of Antithrombotic Therapy After Urgent and Emergent Limb Revascularization. *Can J Cardiol*, 37(3), 504-507. <https://doi.org/10.1016/j.cjca.2020.06.008>

McCordle, B., Zukotynski, K., Doyle, T. E., & **Noseworthy, M. D.** (2021). A Radiology-focused Review of Predictive Uncertainty for AI Interpretability in Computer-assisted Segmentation. *Radiol Artif Intell*, 3(6), e210031. <https://doi.org/10.1148/ryai.2021210031>

**McDonald, S. D.**, Cui, Y. Y., Bacchini, F., Shah, P. S., Asztalos, E., Lacaze-Masmonteil, T., & Murphy, K. E. (2021). Two-Thirds of Preterm Parents Would Participate in a Randomized Controlled Trial Comparing Double Doses of Steroids to a Single Dose and Placebo. *J Obstet Gynaecol Can*, 43(12), 1429-1433. <https://doi.org/10.1016/j.jogc.2021.03.020>

McGillivray, J. E., Debruin, H., Kumbhare, D., & **Noseworthy, M. D.** (2021). The Effect of Exercise on Neural Activation and Cognition: A Review of Task-Based fMRI Studies. *Crit Rev Biomed Eng*, 49(2), 21-52. <https://doi.org/10.1615/CritRevBiomedEng.2021038975>

McIntyre, R. S., Subramaniapillai, M., Shekotikhina, M., Carmona, N. E., Lee, Y., Mansur, R. B., Brietzke, E., Fus, D., Coles, A. S., Iacobucci, M., Park, C., Potts, R., Amer, M., Gillard, J., James, C., Anglin, R., & **Surette, M. G.** (2021). Characterizing the gut microbiota in adults with bipolar disorder: a pilot study. *Nutr Neurosci*, 24(3), 173-180. <https://doi.org/10.1080/1028415X.2019.1612555>

McKendry, J., & **Phillips, S. M.** (2021). Unravelling protein turnover in Duchenne muscular dystrophy: one protein at a time. *J Physiol*, 599(23), 5135-5136. <https://doi.org/10.1113/JP282386>

McKendry, J., Currier, B. S., Lim, C., McLeod, J. C., Thomas, A. C. Q., & **Phillips, S. M.** (2021). Erratum: McKendry, J., et al. Nutritional Supplements to Support Resistance Exercise in Countering the Sarcopenia of Aging. *Nutrients* 2020, 12, 2057. *Nutrients*, 13(3). <https://doi.org/10.3390/nu13031041>

McKendry, J., Stokes, T., McLeod, J. C., & **Phillips, S. M.** (2021). Resistance Exercise, Aging, Disuse, and Muscle Protein Metabolism. *Compr Physiol*, 11(3), 2249-2278. <https://doi.org/10.1002/cphy.c200029>

McMillan, H. J., Kernohan, K. D., Yeh, E., Amburgey, K., Boyd, J., Campbell, C., Dowling, J. J., Gonorazky, H., Marcadier, J., **Tarnopolsky, M. A.**, Vajsar, J., MacKenzie, A., & Chakraborty, P. (2021). Newborn Screening for Spinal Muscular Atrophy: Ontario Testing and Follow-up Recommendations. *Can J Neurol Sci*, 48(4), 504-511. <https://doi.org/10.1017/cjn.2020.229>

McPhee, P. G., Zenlea, I., Hamilton, J. K., Ho, J., Ball, G. D. C., Mian, R., Buchholz, A., Laberge, A. M., Legault, L., Tremblay, M. S., Chanoine, J. P., Thabane, L., & **Morrison, K. M.** (2022). Individual and family characteristics associated with health indicators at entry into multidisciplinary pediatric weight management: findings from the CANadian Pediatric Weight management Registry (CANPWR). *Int J Obes (Lond)*, 46(1), 85-94. <https://doi.org/10.1038/s41366-021-00959-3>

Mehta, N., Li, R., Zhang, D., Soomro, A., He, J., Zhang, I., MacDonald, M., Gao, B., & **Krepinsky, J. C.** (2021). miR299a-5p promotes renal fibrosis by suppressing the antifibrotic actions of follistatin. *Sci Rep*, 11(1), 88. <https://doi.org/10.1038/s41598-020-80199-z>

Meier, M. J., Nguyen, K. C., Crosthwait, J., Kawata, A., Rigden, M., Leingartner, K., Wong, A., **Holloway, A.**, Shwed, P. S., Beaudette, L., Navarro, M., Wade, M., & Tayabali, A. F. (2021). Low dose antibiotic ingestion potentiates systemic and microbiome changes induced by silver nanoparticles. *NanoImpact*, 23, 100343. <https://doi.org/10.1016/j.impact.2021.100343>

Mesci, A., Isfahanian, N., Dayes, I., Lukka, H., & **Tsakiridis, T.** (2022). The Journey of Radiotherapy Dose Escalation in High Risk Prostate Cancer; Conventional Dose Escalation to Stereotactic Body Radiotherapy (SBRT) Boost Treatments. *Clin Genitourin Cancer*, 20(1), e25-e38. <https://doi.org/10.1016/j.clgc.2021.09.004>

Mesci, A., **Tsakiridis, T.**, & Swaminath, A. (2021). Tyrosine Kinase Inhibitor Therapy in Unresectable Locally Advanced NSCLC: Keep Holding Our Breaths or Time to Take a Breather? *J Thorac Oncol*, 16(10), 1607-1609. <https://doi.org/10.1016/j.jtho.2021.06.026>

Mesquita, P. H. C., Vann, C. G., **Phillips, S. M.**, McKendry, J., Young, K. C., Kavazis, A. N., & Roberts, M. D. (2021). Skeletal Muscle Ribosome and Mitochondrial Biogenesis in Response to Different Exercise Training Modalities. *Front Physiol*, 12, 725866. <https://doi.org/10.3389/fphys.2021.725866>

Mezil, Y., **Obeid, J.**, Ushcatz, I., Raha, S., & **Timmons, B. W.** (2021). The Effects of Exercise Serum From Prepubertal Girls and Women on In Vitro Myoblast and Osteoblast Proliferation and Differentiation. *Pediatr Exerc Sci*, 33(2), 82-89. <https://doi.org/10.1123/pes.2020-0206>



Mian, O., **Anderson, L. N.**, Belsky, D. W., Gonzalez, A., Ma, J., **Sloboda, D. M.**, Bowdish, D. M. E., & Verschoor, C. P. (2021). Associations of Adverse Childhood Experiences with Frailty in Older Adults: A Cross-Sectional Analysis of Data from the Canadian Longitudinal Study on Aging. *Gerontology*, 1-10. <https://doi.org/10.1159/000520327>

Millar, E. N., **Surette, M. G.**, & Kidd, K. A. (2022). Altered microbiomes of aquatic macroinvertebrates and riparian spiders downstream of municipal wastewater effluents. *Sci Total Environ*, 809, 151156. <https://doi.org/10.1016/j.scitotenv.2021.151156>

Mohan, D., Mente, A., Dehghan, M., Rangarajan, S., O'Donnell, M., Hu, W., Dagenais, G., Wielgosz, A., Lear, S., Wei, L., Diaz, R., Avezum, A., Lopez-Jaramillo, P., Lanan, F., Swaminathan, S., Kaur, M., Vijayakumar, K., Mohan, V., Gupta, R., **Gerstein, H.C.**, . . . investigators, O. (2021). Associations of Fish Consumption With Risk of Cardiovascular Disease and Mortality Among Individuals With or Without Vascular Disease From 58 Countries. *JAMA Intern Med*, 181(5), 631-649. <https://doi.org/10.1001/jamainternmed.2021.0036>

Mohassel, P., Donkervoort, S., Lone, M. A., Nalls, M., Gable, K., Gupta, S. D., Foley, A. R., Hu, Y., Saute, J. A. M., Moreira, A. L., Kok, F., Intron, A., Logroscino, G., Grunseich, C., Nickolls, A. R., Pourshafie, N., Neuhaus, S. B., Saade, D., Gangfuss, A., **Tarnopolsky, M.A.**, . . . Bonnemann, C. G. (2021). Childhood amyotrophic lateral sclerosis caused by excess sphingolipid synthesis. *Nat Med*, 27(7), 1197-1204. <https://doi.org/10.1038/s41591-021-01346-1>

Mojdami, D., Mitchell, B. D., Spaepen, E., Syring, K., Rabasa-Lhoret, R., **Punthakee, Z.**, Snoek, F., & Peyrot, M. (2021). Conversations and Reactions Around Severe Hypoglycemia Study: Results of Hypoglycemia Experiences in Canadian Adults With Insulin-Treated Diabetes and Their Caregivers. *Can J Diabetes*, 45(3), 236-242. <https://doi.org/10.1016/j.jcid.2020.08.104>

Molina, M., **Anderson, L. N.**, Guindon, G. E., & **Tarride, J. E.** (2022). A review of implementation and evaluation of Pan American Health Organization's policies to prevent childhood obesity in Latin America. *Obes Sci Pract*, 8(3), 352-362. <https://doi.org/10.1002/osp4.572>

Monaco, C. M. F., **Tarnopolsky, M. A.**, Dial, A. G., Nederveen, J. P., Rebalka, I. A., Nguyen, M., Turner, L. V., Perry, C. G. R., **Ljubicic, V.**, & **Hawke, T. J.** (2021). Normal to enhanced intrinsic mitochondrial respiration in skeletal muscle of middle- to older-aged women and men with uncomplicated type 1 diabetes. *Diabetologia*, 64(11), 2517-2533. <https://doi.org/10.1007/s00125-021-05540-1>

Moossavi, S., Fontes, M. E., Rossi, L., Fusch, G., **Surette, M. G.**, & Azad, M. B. (2021). Capturing the diversity of the human milk microbiota through culture-enriched molecular profiling: a feasibility study. *FEMS Microbiol Lett*, 368(3). <https://doi.org/10.1093/femsle/fnab001>

Morfaw, F., Gao, A., Moore, G., Bacchini, F., Santaguida, P., Mukerji, A., & **McDonald, S. D.** (2021). Experiences, Knowledge, and Preferences of Canadian Parents Regarding Preterm Mode of Birth. *J Obstet Gynaecol Can*, 43(7), 839-849. <https://doi.org/10.1016/j.jogc.2020.10.020>

Morfaw, F., Miregwa, B., Bi, A., Mbuagbaw, L., **Anderson, L. N.**, & Thabane, L. (2021). Comparing and combining evidence of treatment effects in randomized and nonrandomized studies on the use of misoprostol to prevent postpartum hemorrhage. *J Evid Based Med*, 14(3), 198-207.

<https://doi.org/10.1111/jebm.12440>

Morgenstern, J. D., Rosella, L. C., Costa, A. P., **de Souza, R. J.**, & **Anderson, L. N.** (2021). Perspective: Big Data and Machine Learning Could Help Advance Nutritional Epidemiology. *Adv Nutr*, 12(3), 621-631.

<https://doi.org/10.1093/advances/nmaa183>

Morgenstern, J. D., Rosella, L. C., Costa, A. P., **de Souza, R. J.**, & **Anderson, L. N.** (2021). Perspective: Big Data and Machine Learning Could Help Advance Nutritional Epidemiology. *Adv Nutr*, 12(3), 621-631.

<https://doi.org/10.1093/advances/nmaa183>

Muir, A. M., Gardner, J. F., van Jaarsveld, R. H., de Lange, I. M., van der Smagt, J. J., Wilson, G. N., Dubbs, H., Goldberg, E. M., Zitano, L., Bupp, C., Martinez, J., Srour, M., Accogli, A., Alhakeem, A., Meltzer, M., Gropman, A., Brewer, C., Caswell, R. C., Montgomery, T., **Tarnopolsky, M.A.**, . . . Mefford, H. C. (2021). Variants in GNAI1 cause a syndrome associated with variable features including developmental delay, seizures, and hypotonia. *Genet Med*, 23(5), 881-887. <https://doi.org/10.1038/s41436-020-01076-8>

Murray-Davis, B., Darling, E. K., Berger, H., Melamed, N., Li, J., Guarna, G., Syed, M., Barrett, J., Geary, M., Mawjee, K., **McDonald, S. D.**, & for, D.-N. (2022). Midwives perceptions of managing pregnancies complicated by obesity: A mixed methods study. *Midwifery*, 105, 103225.

<https://doi.org/10.1016/j.midw.2021.103225>

Nagpal, M. S., Barbaric, A., **Sherifali, D.**, Morita, P. P., & Cafazzo, J. A. (2021). Patient-Generated Data Analytics of Health Behaviors of People Living With Type 2 Diabetes: Scoping Review. *JMIR Diabetes*, 6(4), e29027. <https://doi.org/10.2196/29027>

Nair, P., **Surette, M. G.**, & Virchow, J. C. (2021). Neutrophilic asthma: misconception or misnomer? *Lancet Respir Med.*, 9(5), 441-443. [https://doi.org/10.1016/S2213-2600\(21\)00023-0](https://doi.org/10.1016/S2213-2600(21)00023-0)

Nederveen, J. P., Manta, K., Bujak, A. L., Simone, A. C., Fuda, M. R., Nilsson, M. I., Hettinga, B. P., Hughes, M. C., Perry, C. G. R., & **Tarnopolsky, M. A.** (2021). A Novel Multi-Ingredient Supplement Activates a Browning Program in White Adipose Tissue and Mitigates Weight Gain in High-Fat Diet-Fed Mice. *Nutrients*, 13(11). <https://doi.org/10.3390/nu13113726>

Nederveen, J. P., Warnier, G., Di Carlo, A., Nilsson, M. I., & **Tarnopolsky, M. A.** (2020). Extracellular Vesicles and Exosomes: Insights From Exercise Science. *Front Physiol*, 11, 604274.

<https://doi.org/10.3389/fphys.2020.604274>

Ni, M., Afroze, B., Xing, C., Pan, C., Shao, Y., Cai, L., Cantarel, B. L., Pei, J., Grishin, N. V., Hewson, S., Knight, D., Mahida, S., Michel, D., **Tarnopolsky, M.**, Poduri, A., Rotenberg, A., Sondheimer, N., & DeBerardinis, R. J. (2021). A pathogenic UFSP2 variant in an autosomal recessive form of pediatric neurodevelopmental anomalies and epilepsy. *Genet Med*, 23(5), 900-908.

<https://doi.org/10.1038/s41436-020-01071-z>

Nicolini, C., Fahnestock, M., **Gibala, M. J.**, & Nelson, A. J. (2021). Understanding the Neurophysiological and Molecular Mechanisms of Exercise-Induced Neuroplasticity in Cortical and Descending Motor Pathways: Where Do We Stand? *Neuroscience*, 457, 259-282.

<https://doi.org/10.1016/j.neuroscience.2020.12.013>

Ninan, K., Morfaw, F., Murphy, K. E., Beyene, J., & **McDonald, S. D.** (2021). Neonatal and Maternal Outcomes of Lower Versus Standard Doses of Antenatal Corticosteroids for Women at Risk of Preterm Delivery: A Systematic Review of Randomized Controlled Trials. *J Obstet Gynaecol Can*, 43(1), 74-81.

<https://doi.org/10.1016/j.jogc.2020.02.127>

Northwood, M., Ploeg, J., Markle-Reid, M., & **Sherifali, D.** (2021). The Complexity of Living with Diabetes and Urinary Incontinence for Older Adults with Multiple Chronic Conditions Receiving Home Care Services: An Interpretive Description Study. *Glob Qual Nurs Res*, 8, 2333393621993452.

<https://doi.org/10.1177/2333393621993452>

Noten, S., van den Berg-Emons, R. J. G., Thorpe, D. E., Heyn, P. C., Marciniak, C. M., McPhee, P. G., Lamberts, R. P., Langerak, N. G., Verschuren, O., Salokivi, T., **Morrison, K. M.**, Peterson, M. D., Limsakul, C., Stam, H. J., Papageorgiou, G., Versmissen, J., & Van Der Slot, W. M. A. (2021). Blood pressure in adults with cerebral palsy: a systematic review and meta-analysis of individual participant data. *J Hypertens*, 39(10), 1942-1955. <https://doi.org/10.1097/HJH.0000000000002912>

Nowikow, C. E., Polak, P., Konyer, N. B., Nikolova, N. K., & **Noseworthy, M. D.** (2021). Network and Field Analysis of Koch Snowflake Fractal Geometry Radiofrequency Coils for Sodium MRI. *Frontiers in Physics*, 9. <https://doi.org/10.3389/fphy.2021.697104>

Nunes, E. A., Currier, B. S., Lim, C., & **Phillips, S. M.** (2021). Nutrient-dense protein as a primary dietary strategy in healthy ageing: please sir, may we have more? *Proc Nutr Soc*, 80(2), 264-277.

<https://doi.org/10.1017/S0029665120007892>

Olahova, M., Peter, B., Szilagyi, Z., Diaz-Maldonado, H., Singh, M., Sommerville, E. W., Blakely, E. L., Collier, J. J., Hoberg, E., Stranecky, V., Hartmannova, H., Bleyer, A. J., McBride, K. L., Bowden, S. A., Korandova, Z., Pecinova, A., Ropers, H. H., Kahrizi, K., Najmabadi, H., **Tarnopolsky, M.A.**, . . . Taylor, R. W. (2021). POLRMT mutations impair mitochondrial transcription causing neurological disease. *Nat Commun*, 12(1), 1135. <https://doi.org/10.1038/s41467-021-21279-0>

Ollers, L. S., Yousuf, E. I., Hamatschek, C., **Morrison, K. M.**, Hermanussen, M., Fusch, C., & Rochow, N. (2022). Metabolic-endocrine disruption due to preterm birth impacts growth, body composition, and neonatal outcome. *Pediatr Res*, 91(6), 1350-1360. <https://doi.org/10.1038/s41390-021-01566-8>

**Pai, N.**, Popov, J., Hill, L., Hartung, E., Grzywacz, K., Moayyedi, P., & McMaster Pediatric Fecal Microbiota Transplant Research, C. (2021). Results of the First Pilot Randomized Controlled Trial of Fecal Microbiota Transplant In Pediatric Ulcerative Colitis: Lessons, Limitations, and Future Prospects. *Gastroenterology*, 161(2), 388-393 e383. <https://doi.org/10.1053/j.gastro.2021.04.067>

anday, J., Taneja, S., Popoola, A., Pack, R., Greyson, D., **McDonald, S. D.**, Black, M., Murray-Davis, B., Darling, E., & Vanstone, M. (2022). Clinician responses to cannabis use during pregnancy and lactation: a systematic review and integrative mixed-methods research synthesis. *Fam Pract*, 39(3), 504-514. <https://doi.org/10.1093/fampra/cmab146>

Pandey, A. K., Okaj, I., Kaur, H., Belley-Cote, E. P., Wang, J., Oraii, A., Benz, A. P., Johnson, L. S. B., Young, J., Wong, J. A., Verma, S., Conen, D., **Gerstein, H.**, Healey, J. S., & McIntyre, W. F. (2021). Sodium-Glucose Co-Transporter Inhibitors and Atrial Fibrillation: A Systematic Review and Meta-Analysis of Randomized Controlled Trials. *J Am Heart Assoc*, 10(17), e022222. <https://doi.org/10.1161/JAHA.121.022222>

Pankov, K. V., **McArthur, A. G.**, Gold, D. A., Nelson, D. R., Goldstone, J. V., & Wilson, J. Y. (2021). The cytochrome P450 (CYP) superfamily in cnidarians. *Sci Rep*, 11(1), 9834. <https://doi.org/10.1038/s41598-021-88700-y>

Parackal, A., Ramamoorthi, K., & **Tarride, J. E.** (2022). Economic Evaluation of Palliative Care Interventions: A Review of the Evolution of Methods From 2011 to 2019. *Am J Hosp Palliat Care*, 39(1), 108-122. <https://doi.org/10.1177/10499091211011138>

Parks, J., McLean, K. E., McCandless, L., **de Souza, R. J.**, Brook, J. R., Scott, J., Turvey, S. E., Mandhane, P. J., Becker, A. B., Azad, M. B., Moraes, T. J., Lefebvre, D. L., Sears, M. R., Subbarao, P., & Takaro, T. K. (2022). Assessing secondhand and thirdhand tobacco smoke exposure in Canadian infants using questionnaires, biomarkers, and machine learning. *J Expo Sci Environ Epidemiol*, 32(1), 112-123. <https://doi.org/10.1038/s41370-021-00350-4>

Patel, S., & **Werstuck, G.** (2021). Characterizing the Role of Glycogen Synthase Kinase-3alpha/beta in Macrophage Polarization and the Regulation of Pro-Atherogenic Pathways in Cultured Ldlr(-/-) Macrophages. *Front Immunol*, 12, 676752. <https://doi.org/10.3389/fimmu.2021.676752>

Patel, S., & **Werstuck, G. H.** (2021). Macrophage Function and the Role of GSK3. *Int J Mol Sci*, 22(4). <https://doi.org/10.3390/ijms22042206>

Pedrana, G., Larranaga, C., Diaz, A., Viotti, H., Lombide, P., Cavestany, D., Vickers, M. H., Martin, G. B., & **Sloboda, D. M.** (2021). Maternal undernutrition during pregnancy and lactation increases transcription factors, ETV5 and GDNF, and alters regulation of apoptosis and heat shock proteins in the testis of adult offspring in the rat. *Reprod Fertil Dev*, 33(7), 484-496. <https://doi.org/10.1071/RD20260>

Piccinini-Vallis, H., Brown, J. B., Ryan, B. L., **McDonald, S. D.**, & Stewart, M. (2021). Women's Views on Advice About Weight Gain in Pregnancy: A Grounded Theory Study. *Matern Child Health J*, 25(11), 1717-1724. <https://doi.org/10.1007/s10995-021-03222-3>

Polak, P., Schulte, R. F., & **Noseworthy, M. D.** (2022). An approach to evaluation of the point-spread function for (23) Na magnetic resonance imaging. *NMR Biomed*, 35(2), e4627. <https://doi.org/10.1002/nbm.4627>

Popov, J., Caputi, V., Nandeesh, N., Rodriguez, D. A., & **Pai, N.** (2021). Microbiota-Immune Interactions in Ulcerative Colitis and Colitis Associated Cancer and Emerging Microbiota-Based Therapies. *Int J Mol Sci*, 22(21). <https://doi.org/10.3390/ijms222111365>

Power, N., Turpin, W., Espin-Garcia, O., Smith, M. I., Consortium, C. G. P. R., & Croitoru, K. (2021). Serum Zonulin Measured by Commercial Kit Fails to Correlate With Physiologic Measures of Altered Gut Permeability in First Degree Relatives of Crohn's Disease Patients. *Front Physiol*, 12, 645303. <https://doi.org/10.3389/fphys.2021.645303>

Poznanski, S. M., Singh, K., Ritchie, T. M., Aguiar, J. A., Fan, I. Y., Portillo, A. L., Rojas, E. A., Vahedi, F., El-Sayes, A., Xing, S., Butcher, M., Lu, Y., Doxey, A. C., **Schertzer, J. D.**, Hirte, H. W., & Ashkar, A. A. (2021). Metabolic flexibility determines human NK cell functional fate in the tumor microenvironment. *Cell Metab*, 33(6), 1205-1220 e1205. <https://doi.org/10.1016/j.cmet.2021.03.023>

Prasad, C., Sanger, S., **Chanchlani, R.**, Kirpalani, A., & Noone, D. (2022). Engaging medical students and residents in nephrology education: an updated scoping review. *J Nephrol*, 35(1), 3-32. <https://doi.org/10.1007/s40620-021-01135-6>

Proudfoot, N. A., King-Dowling, S., Cairney, J., Bray, S. R., MacDonald, M. J., & **Timmons, B. W.** (2021). Physical Activity and Trajectories of Cardiovascular Health Indicators During Early Childhood. *Pediatric Collections: Sports Medicine Playbook*, 277–287. [https://doi.org/10.1542/9781610026109-risks\\_and\\_benefits\\_ch07](https://doi.org/10.1542/9781610026109-risks_and_benefits_ch07)

Racey, M., Markle-Reid, M., Fitzpatrick-Lewis, D., Ali, M. U., Gagne, H., Hunter, S., Ploeg, J., Sztramko, R., Harrison, L., Lewis, R., Jovkovic, M., & **Sherifali, D.** (2021). Applying the RE-AIM implementation framework to evaluate fall prevention interventions in community dwelling adults with cognitive impairment: a review and secondary analysis. *BMC Geriatr*, 21(1), 441. <https://doi.org/10.1186/s12877-021-02376-7>

Raez-Villanueva, S., Debnath, A., Hardy, D. B., & **Holloway, A. C.** (2022). Prenatal nicotine exposure leads to decreased histone H3 lysine 9 (H3K9) methylation and increased p66shc expression in the neonatal pancreas. *J Dev Orig Health Dis*, 13(2), 156-160. <https://doi.org/10.1017/S2040174421000283>

Rafiq, T., Azab, S. M., Teo, K. K., Thabane, L., **Anand, S. S.**, **Morrison, K. M.**, **de Souza, R. J.**, & Britz-McKibbin, P. (2021). Nutritional Metabolomics and the Classification of Dietary Biomarker Candidates: A Critical Review. *Adv Nutr*, 12(6), 2333-2357. <https://doi.org/10.1093/advances/nmab054>

Rathmann, S. M., Genady, A. R., Janzen, N., Anipindi, V., Czorny, S., Rullo, A. F., **Sadeghi, S.**, & Valliant, J. F. (2021). A Versatile Platform for the Development of Radiolabeled Antibody-Recruiting Small Molecules. *Mol Pharm*, 18(7), 2647-2656. <https://doi.org/10.1021/acs.molpharmaceut.1c00187>

Rebinsky, R., **Anderson, L. N.**, & Morgenstern, J. D. (2021). Identifying non-traditional electronic datasets for population-level surveillance and prevention of cardiometabolic diseases: a scoping review protocol. *BMJ Open*, 11(8), e053485. <https://doi.org/10.1136/bmjopen-2021-053485>



Restivo, V. E., Kidd, K. A., **Surette, M. G.**, Bucking, C., & Wilson, J. Y. (2021). The gut content microbiome of wild-caught rainbow darter is altered during laboratory acclimation. *Comp Biochem Physiol Part D Genomics Proteomics*, 39, 100835. <https://doi.org/10.1016/j.cbd.2021.100835>

Restivo, V. E., Kidd, K. A., **Surette, M. G.**, Servos, M. R., & Wilson, J. Y. (2021). Rainbow darter (*Etheostoma caeruleum*) from a river impacted by municipal wastewater effluents have altered gut content microbiomes. *Sci Total Environ*, 751, 141724. <https://doi.org/10.1016/j.scitotenv.2020.141724>

Retnakaran, R., Emery, A., Ye, C., Harris, S. B., Reichert, S. M., **McInnes, N.**, **Gerstein, H. C.**, Thorpe, K. E., Kramer, C. K., & Zinman, B. (2021). Short-term intensive insulin as induction and maintenance therapy for the preservation of beta-cell function in early type 2 diabetes (RESET-IT Main): A 2-year randomized controlled trial. *Diabetes Obes Metab*, 23(8), 1926-1935. <https://doi.org/10.1111/dom.14421>

Rhein, P., Desjardins, E. M., Rong, P., Ahwazi, D., Bonhoure, N., Stolte, J., Santos, M. D., Ovens, A. J., Ehrlich, A. M., Sanchez Garcia, J. L., Ouyang, Q., Yabut, J. M., Kjolby, M., Membrez, M., Jessen, N., Oakhill, J. S., Treebak, J. T., Maire, P., Scott, J. W., . . . **Steinberg, G.R.**, Sakamoto, K. (2021). Compound- and fiber type-selective requirement of AMPKgamma3 for insulin-independent glucose uptake in skeletal muscle. *Mol Metab*, 51, 101228. <https://doi.org/10.1016/j.molmet.2021.101228>

Riddle, M. C., Cefalu, W. T., Evans, P. H., **Gerstein, H. C.**, Nauck, M. A., Oh, W. K., Rothberg, A. E., le Roux, C. W., Rubino, F., Schauer, P., Taylor, R., & Twenefour, D. (2022). Consensus report: Definition and interpretation of remission in type 2 diabetes. *Diabet Med*, 39(3), e14669. <https://doi.org/10.1111/dme.14669>

Riddle, M. C., Cefalu, W. T., Evans, P. H., **Gerstein, H. C.**, Nauck, M. A., Oh, W. K., Rothberg, A. E., le Roux, C. W., Rubino, F., Schauer, P., Taylor, R., & Twenefour, D. (2021). Consensus report: definition and interpretation of remission in type 2 diabetes. *Diabetologia*, 64(11), 2359-2366. <https://doi.org/10.1007/s00125-021-05542-z>

Riddle, M. C., Cefalu, W. T., Evans, P. H., **Gerstein, H. C.**, Nauck, M. A., Oh, W. K., Rothberg, A. E., le Roux, C. W., Rubino, F., Schauer, P., Taylor, R., & Twenefour, D. (2021). Consensus Report: Definition and Interpretation of Remission in Type 2 Diabetes. *Diabetes Care*. <https://doi.org/10.2337/dci21-0034>

Riddle, M. C., **Gerstein, H. C.**, & Home, P. D. (2021). Lingering Effects of Hyperglycemia in Recently Diagnosed Diabetes During Long-term Follow-up of the DCCT/EDIC and UKPDS Cohorts: More Evidence That Early Control Matters. *Diabetes Care*. <https://doi.org/10.2337/dci21-0030>

Riddle, M. C., **Gerstein, H. C.**, Xavier, D., Cushman, W. C., Leiter, L. A., Raubenheimer, P. J., Atisso, C. M., Raha, S., Varnado, O. J., Konig, M., Lakshmanan, M., & Franek, E. (2021). Efficacy and Safety of Dulaglutide in Older Patients: A post hoc Analysis of the REWIND trial. *J Clin Endocrinol Metab*, 106(5), 1345-1351. <https://doi.org/10.1210/clinem/dgab065>

Rios, J. D., Shah, P. S., Beltempo, M., Louis, D., Mukerji, A., Premji, S., Shah, V., Lee, S. K., Pechlivanoglou, P., Canadian Preterm Birth Network, I., & Canadian Neonatal Network, I. (2021). Costs of Neonatal Intensive Care for Canadian Infants with Preterm Birth. *J Pediatr*, 229, 161-167 e112. <https://doi.org/10.1016/j.jpeds.2020.09.045>

Rizzolo, A., Shah, P. S., Bertelle, V., Makary, H., Ye, X. Y., Abenhaim, H. A., Piedboeuf, B., Beltempo, M., Canadian Neonatal, N., & Canadian Preterm Birth Network, I. (2021). Association of timing of birth with mortality among preterm infants born in Canada. *J Perinatol*, 41(11), 2597-2606.

<https://doi.org/10.1038/s41372-021-01092-9>

Roberts, J. D., Vittinghoff, E., Lu, A. T., Alonso, A., Wang, B., Sitlani, C. M., Mohammadi-Shemirani, P., Fornage, M., Kornej, J., Brody, J. A., Arking, D. E., Lin, H., Heckbert, S. R., Prokic, I., Ghanbari, M., Skanes, A. C., Bartz, T. M., Perez, M. V., Taylor, K. D., **Pare, G.** . . Marcus, G. M. (2021). Epigenetic Age and the Risk of Incident Atrial Fibrillation. *Circulation*, 144(24), 1899-1911.

<https://doi.org/10.1161/CIRCULATIONAHA.121.056456>

Robinson, C. H., Jeyakumar, N., Luo, B., Wald, R., Garg, A. X., Nash, D. M., McArthur, E., Greenberg, J. H., Askenazi, D., Mammen, C., Thabane, L., Goldstein, S., Parekh, R. S., Zappitelli, M., & **Chanchlani, R.** (2021). Long-Term Kidney Outcomes Following Dialysis-Treated Childhood Acute Kidney Injury: A Population-Based Cohort Study. *J Am Soc Nephrol*, 32(8), 2005-2019.

<https://doi.org/10.1681/ASN.2020111665>

Robinson, C. H., Jeyakumar, N., Wald, R., Zappitelli, M., & **Chanchlani, R.** (2021). Authors' Reply. *J Am Soc Nephrol*, 32(10), 2681-2682. <https://doi.org/10.1681/ASN.2021060879>

Robinson, C., Benisty, K., Cockovski, V., Joffe, A. R., Garros, D., Riglea, T., Pizzi, M., Palijan, A., **Chanchlani, R.**, Morgan, C., & Zappitelli, M. (2021). Serum Creatinine Monitoring After Acute Kidney Injury in the PICU. *Pediatr Crit Care Med*, 22(4), 412-425.

<https://doi.org/10.1097/PCC.0000000000002662>

Robinson, C., **Chanchlani, R.**, Gayowsky, A., Brar, S., Darling, E., Demers, C., Klowak, J., Knight, B., Kuenzig, E., Mondal, T., Parekh, R., Seow, H., Jimenez-Rivera, C., Webster, R., Fung, S., Benchimol, E. I., & Batthish, M. (2021). Incidence and short-term outcomes of Kawasaki disease. *Pediatr Res*, 90(3), 670-677. <https://doi.org/10.1038/s41390-021-01496-5>

Robinson, C., Hessey, E., Nunes, S., Dorais, M., **Chanchlani, R.**, Lacroix, J., Jouvett, P., Phan, V., & Zappitelli, M. (2022). Acute kidney injury in the pediatric intensive care unit: outpatient follow-up. *Pediatr Res*, 91(1), 209-217. <https://doi.org/10.1038/s41390-021-01414-9>

Robinson, C., Lao, F., **Chanchlani, R.**, Gayowsky, A., Darling, E., & Batthish, M. (2021). Long-term hearing and neurodevelopmental outcomes following Kawasaki disease: A population-based cohort study. *Brain Dev*, 43(7), 735-744. <https://doi.org/10.1016/j.braindev.2021.03.001>

Rodgers, N., **McDonald, S.**, & Wootton, B. M. (2021). Cognitive behavioral therapy for hoarding disorder: An updated meta-analysis. *J Affect Disord*, 290, 128-135. <https://doi.org/10.1016/j.jad.2021.04.067>

Rodriguez-Lopez, S., **Chanchlani, R.**, Dart, A. B., Morgan, C. J., Lapeyraque, A. L., Tee, J. B., Brobbey, A., Perinpanayagam, M. A., Samuel, S., & Nettel-Aguirre, A. (2021). Characteristics Associated with Variation in Corticosteroid Exposure in Children with Steroid-Sensitive Nephrotic Syndrome: Results from a Canadian Longitudinal Study. *Kidney360*, 2(12), 1960-1967. <https://doi.org/10.34067/KID.0002692021>

Roschel, H., Hayashi, A. P., Fernandes, A. L., Jambassi-Filho, J. C., Hevia-Larrain, V., de Capitani, M., Santana, D. A., Goncalves, L. S., de Sa-Pinto, A. L., Lima, F. R., Sapienza, M. T., Duarte, A. J. S., Pereira, R. M. R., **Phillips, S. M.**, & Gualano, B. (2021). Supplement-based nutritional strategies to tackle frailty: A multifactorial, double-blind, randomized placebo-controlled trial. *Clin Nutr*, 40(8), 4849-4858.

<https://doi.org/10.1016/j.clnu.2021.06.024>

Safdar, A., Khrapko, K., Flynn, J. M., Saleem, A., De Lisio, M., Johnston, A. P. W., Kratysberg, Y., Samjoo, I. A., Kitaoka, Y., Ogborn, D. I., Little, J. P., **Raha, S.**, Parise, G., Akhtar, M., Hettinga, B. P., Rowe, G. C., Arany, Z., Prolla, T. A., & **Tarnopolsky, M. A.** (2021). Retraction Note to: Exercise-induced mitochondrial p53 repairs mtDNA mutations in mutator mice. *Skelet Muscle*, 11(1), 8. <https://doi.org/10.1186/s13395-021-00264-7>

Saner, N. J., Lee, M. J., Kuang, J., Pitchford, N. W., Roach, G. D., Garnham, A., Genders, A. J., Stokes, T., Schroder, E. A., Huo, Z., Esser, K. A., **Phillips, S. M.**, Bishop, D. J., & Bartlett, J. D. (2021). Exercise mitigates sleep-loss-induced changes in glucose tolerance, mitochondrial function, sarcoplasmic protein synthesis, and diurnal rhythms. *Mol Metab*, 43, 101110. <https://doi.org/10.1016/j.molmet.2020.101110>

Sanger, N., D'Elia, A., Sanger, S., Rosic, T., **Samaan, M. C.**, Kapczynski, F., **de Souza, R. J.**, Thabane, L., & Samaan, Z. (2021). Association between vaping and health outcomes in patients with opioid use disorder: a systematic review protocol. *BMJ Open*, 11(1), e040349. <https://doi.org/10.1136/bmjopen-2020-040349>

Sanger, N., Panesar, B., Rosic, T., Dennis, B., D'Elia, A., Hillmer, A., Chawar, C., Naji, L., Hudson, J., **Samaan, M. C.**, de Souza, R. J., Marsh, D. C., Thabane, L., & Samaan, Z. (2021). The future of precision medicine in opioid use disorder: inclusion of patient-important outcomes in clinical trials. *Braz J Psychiatry*, 43(2), 138-146. <https://doi.org/10.1590/1516-4446-2019-0734>

Sariya, S., Felsky, D., Reyes-Dumeyer, D., Lali, R., Lantigua, R. A., Vardarajan, B., Jimenez-Velazquez, I. Z., Haines, J. L., Shellenberg, G. D., Pericak-Vance, M. A., **Pare, G.**, Mayeux, R., & Tosto, G. (2021). Polygenic Risk Score for Alzheimer's Disease in Caribbean Hispanics. *Ann Neurol*, 90(3), 366-376. <https://doi.org/10.1002/ana.26131>

Sattar, N., Lee, M. M. Y., Kristensen, S. L., Branch, K. R. H., del Prato, S., Khurmi, N. S., Lam, C. S. P., Lopes, R. D., McMurray, J. J. V., Pratley, R. E., Rosenstock, J., & **Gerstein, H. C.** (2021). Cardiovascular, mortality, and kidney outcomes with GLP-1 receptor agonists in patients with type 2 diabetes: a systematic review and meta-analysis of randomised trials. *The Lancet Diabetes & Endocrinology*, 9(10), 653-662. [https://doi.org/10.1016/s2213-8587\(21\)00203-5](https://doi.org/10.1016/s2213-8587(21)00203-5)

Savija, N., Leong, D. P., Pinthus, J., Karampatos, S., Shayegan, B., Mian, R., Rangarajan, S., Fradet, V., **de Souza, R. J.**, Mente, A., & Dehghan, M. (2021). Development and Comparability of a Short Food-Frequency Questionnaire to Assess Diet in Prostate Cancer Patients: The Role of Androgen Deprivation Therapy in Cardiovascular Disease - A Longitudinal Prostate Cancer Study (RADICAL PC) Substudy. *Curr Dev Nutr*, 5(11), nzab106. <https://doi.org/10.1093/cdn/nzab106>

Schemitsch, E., Adachi, J. D., Brown, J. P., **Tarride, J. E.**, Burke, N., Oliveira, T., & Slatkovska, L. (2022). Hip fracture predicts subsequent hip fracture: a retrospective observational study to support a call to early hip fracture prevention efforts in post-fracture patients. *Osteoporos Int*, 33(1), 113-122.

<https://doi.org/10.1007/s00198-021-06080-5>

**Schertzer, J. D.**, & Lam, T. K. T. (2021). Peripheral and central regulation of insulin by the intestine and microbiome. *Am J Physiol Endocrinol Metab*, 320(2), E234-E239.

<https://doi.org/10.1152/ajpendo.00547.2020>

Schoenfeld, B., Fisher, J., Grgic, J., Haun, C., Helms, E., **Phillips, S.**, Steele, J., & Vigotsky, A. (2021). Resistance Training Recommendations to Maximize Muscle Hypertrophy in an Athletic Population: Position Stand of the IUSCA. *International Journal of Strength and Conditioning*, 1(1).

<https://doi.org/10.47206/ijsc.v1i1.81>

Schooser, B., Roberts, M., Byrne, B. J., Sitaraman, S., Jiang, H., Laforêt, P., Toscano, A., Castelli, J., Díaz-Manera, J., Goldman, M., van der Ploeg, A. T., Bratkovic, D., Kuchipudi, S., Mozaffar, T., Kishnani, P. S., Sebok, A., Pestronk, A., Dominovic-Kovacevic, A., Khan, A., . . . Chien, Y. H. (2021). Safety and efficacy of ciproglucosidase alfa plus miglustat versus alglucosidase alfa plus placebo in late-onset Pompe disease (PROPEL): an international, randomised, double-blind, parallel-group, phase 3 trial. *The Lancet Neurology*, 20(12), 1027–1037. [https://doi.org/10.1016/s1474-4422\(21\)00331-8](https://doi.org/10.1016/s1474-4422(21)00331-8)

Sen, J., Tonkin, A., Varigos, J., Fonguh, S., Berkowitz, S. D., Yusuf, S., Verhamme, P., Vanassche, T., **Anand, S. S.**, Fox, K. A. A., Eikelboom, J. W., Amerena, J., & Investigators, C. T. (2021). Risk stratification of cardiovascular complications using CHA2DS2-VASc and CHADS2 scores in chronic atherosclerotic cardiovascular disease. *Int J Cardiol*, 337, 9-15. <https://doi.org/10.1016/j.ijcard.2021.04.067>

Shanmuganathan, M., Kroezen, Z., Gill, B., Azab, S., **de Souza, R. J.**, Teo, K. K., Atkinson, S., Subbarao, P., Desai, D., **Anand, S. S.**, & Britz-McKibbin, P. (2021). The maternal serum metabolome by multisegment injection-capillary electrophoresis-mass spectrometry: a high-throughput platform and standardized data workflow for large-scale epidemiological studies. *Nat Protoc*, 16(4), 1966-1994.

<https://doi.org/10.1038/s41596-020-00475-0>

Shapiro, J., Ray, J. G., McArthur, E., Jeyakumar, N., **Chanchlani, R.**, Harel, Z., Arora, R., Meraz-Munoz, A., Garg, A. X., Hladunewich, M., & Wald, R. (2022). Risk of Acute Kidney Injury After Hypertensive Disorders of Pregnancy: A Population-Based Cohort Study. *Am J Kidney Dis*, 79(4), 561-569.

<https://doi.org/10.1053/j.ajkd.2021.07.017>

Shapiro, M., Arbel, C., Zucker, I., Balmor, G. R., Lutski, M., Derazne, E., Beer, Z., Pinhas-Hamiel, O., Mosenzon, O., Tzur, D., Afek, A., Tirosh, A., Cukierman-Yaffe, T., **Gerstein, H. C.**, Rosenberg, V., Chodick, G., Raz, I., & Twig, G. (2021). Asthma in Youth and Early-onset Type 2 Diabetes: A Nationwide Study of 1.72 Million Israeli Adolescents. *J Clin Endocrinol Metab*, 106(12), e5043-e5053.

<https://doi.org/10.1210/clinem/dgab542>

Sharma, A., Singh, S., Ahmad, S., Gulzar, F., **Schertzer, J. D.**, & Tamrakar, A. K. (2021). NOD1 activation induces oxidative stress via NOX1/4 in adipocytes. *Free Radic Biol Med*, 162, 118-128.

<https://doi.org/10.1016/j.freeradbiomed.2020.11.036>

Sharma, B., Allison, D., Tucker, P., Mabbott, D., & **Timmons, B. W.** (2021). Exercise Trials in Pediatric Brain Tumor: A Systematic Review of Randomized Studies. *J Pediatr Hematol Oncol*, 43(2), 59-67. <https://doi.org/10.1097/MPH.0000000000001844>

Sharpe, I., Kirkpatrick, S. I., Smith, B. T., Keown-Stoneman, C. D. G., Omand, J., Vanderhout, S., Maguire, J. L., Birken, C. S., **Anderson, L. N.**, & collaboration, T. A. K. (2021). Automated Self-Administered 24-H Dietary Assessment Tool (ASA24) recalls for parent proxy-reporting of children's intake (> 4 years of age): a feasibility study. *Pilot Feasibility Stud*, 7(1), 123. <https://doi.org/10.1186/s40814-021-00864-6>

Sharpe, I., Kirkpatrick, S. I., Smith, B. T., Keown-Stoneman, C. D. G., Omand, J., Vanderhout, S., Maguire, J. L., Birken, C. S., & **Anderson, L. N.** (2021). Automated Self-Administered 24-H Dietary Assessment Tool (ASA24) recalls for parent proxy-reporting of children's intake (> 4 years of age): a feasibility study. *Pilot and Feasibility Studies*, 7(1). <https://doi.org/10.1186/s40814-021-00864-6>

Siegal, D. M., & **Anand, S. S.** (2021). Considerations for use of direct oral anticoagulants in arterial disease. *Res Pract Thromb Haemost*, 5(4). <https://doi.org/10.1002/rth2.12502>

Singh, J., Pandit, P., **McArthur, A. G.**, Banerjee, A., & Mossman, K. (2021). Evolutionary trajectory of SARS-CoV-2 and emerging variants. *Virology*, 18(1), 166. <https://doi.org/10.1186/s12985-021-01633-w>

Sinha, R., Agrawal, N., Xue, Y., **Chanchlani, R.**, Pradhan, S., Raina, R., & Marks, S. D. (2021). Use of rituximab in paediatric nephrology. *Arch Dis Child*, 106(11), 1058-1065. <https://doi.org/10.1136/archdischild-2020-321211>

Sjaarda, C. P., Guthrie, J. L., Mubareka, S., Simpson, J. T., Hamelin, B., Wong, H., Mortimer, L., Slinger, R., **McArthur, A. G.**, Desjardins, M., McGeer, A., Mazzulli, T., Douchant, K., Brabant-Kirwan, D., Fattouh, R., Campigotto, A., Patel, S. N., Fittipaldi, N., Colautti, R. I., & Sheth, P. M. (2021). Temporal Dynamics and Evolution of SARS-CoV-2 Demonstrate the Necessity of Ongoing Viral Genome Sequencing in Ontario, Canada. *mSphere*, 6(3). <https://doi.org/10.1128/mSphere.00011-21>

Skelly, L. E., Gillen, J. B., Frankish, B. P., MacInnis, M. J., Godkin, F. E., **Tarnopolsky, M. A.**, Murphy, R. M., & **Gibala, M. J.** (2021). Human skeletal muscle fiber type-specific responses to sprint interval and moderate-intensity continuous exercise: acute and training-induced changes. *J Appl Physiol* (1985), 130(4), 1001-1014. <https://doi.org/10.1152/jappphysiol.00862.2020>

Skinner, H., Hu, C., **Tsakiridis, T.**, Santana-Davila, R., Lu, B., Erasmus, J. J., Doemer, A. J., Videtic, G. M. M., Coster, J., Yang, A. X., Lee, R. Y., Werner-Wasik, M., Schaner, P. E., McCormack, S. E., Esparaz, B. T., McGarry, R. C., Bazan, J., Struve, T., Paulus, R., & Bradley, J. D. (2021). Addition of Metformin to Concurrent Chemoradiation in Patients With Locally Advanced Non-Small Cell Lung Cancer: The NRG-LU001 Phase 2 Randomized Clinical Trial. *JAMA Oncol*, 7(9), 1324-1332. <https://doi.org/10.1001/jamaoncol.2021.2318>



Smith, B. T., Hack, S., Jessri, M., Arcand, J., McLaren, L., L'Abbe, M. R., **Anderson, L. N.**, Hobin, E., Hammond, D., Manson, H., Rosella, L. C., & Manuel, D. G. (2021). The Equity and Effectiveness of Achieving Canada's Voluntary Sodium Reduction Guidance Targets: A Modelling Study Using the 2015 Canadian Community Health Survey-Nutrition. *Nutrients*, 13(3). <https://doi.org/10.3390/nu13030779>

Smyth, A., Judge, C., Wang, X., **Pare, G.**, Rangarajan, S., Canavan, M., Chin, S. L., Al-Hussain, F., Yusufali, A. M., Elsayed, A., Damasceno, A., Avezum, A., Czlonkowska, A., Rosengren, A., Dans, A. L., Oguz, A., Mondo, C., Weimar, C., Ryglewicz, D., . . . investigators, I. (2021). Renal Impairment and Risk of Acute Stroke: The INTERSTROKE Study. *Neuroepidemiology*, 55(3), 206-215. <https://doi.org/10.1159/000515239>

Sockalingam, L., Desai, D., Wong, A., Azim, G., Doobay, B., Khalid, Z., & **Anand, S. S.** (2021). The Rise in Cardiovascular Risk Factors and Chronic Diseases in Guyana: A Narrative Review. *Ann Glob Health*, 87(1), 46. <https://doi.org/10.5334/aogh.3060>

Steele, J., Androulakis-Korakakis, P., Carlson, L., Williams, D., **Phillips, S.**, Smith, D., Schoenfeld, B. J., Loenneke, J. P., Winett, R., Abe, T., Dufour, S., Franchi, M. V., Sarto, F., Lundberg, T. R., Gentil, P., Kvorning, T., Giessing, J., Sedliak, M., Paoli, A., . . . Fisher, J. P. (2021). The Impact of Coronavirus (COVID-19) Related Public-Health Measures on Training Behaviours of Individuals Previously Participating in Resistance Training: A Cross-Sectional Survey Study. *Sports Med*, 51(7), 1561-1580. <https://doi.org/10.1007/s40279-021-01438-5>

Stillo, D., Danielli, E., Ho, R. A., DeMatteo, C., Hall, G. B., Bock, N. A., Connolly, J. F., & **Noseworthy, M. D.** (2021). Localization and Identification of Brain Microstructural Abnormalities in Paediatric Concussion. *Front Hum Neurosci*, 15, 657374. <https://doi.org/10.3389/fnhum.2021.657374>

Stokes, K., Nunes, M., Trombley, C., Flores, D., Wu, G., Taleb, Z., Alkhateeb, A., Banskota, S., Harris, C., Love, O. P., **Khan, W. I.**, Rueda, L., Hogenesch, J. B., & Karpowicz, P. (2021). The Circadian Clock Gene, Bmal1, Regulates Intestinal Stem Cell Signaling and Represses Tumor Initiation. *Cell Mol Gastroenterol Hepatol*, 12(5), 1847-1872 e1840. <https://doi.org/10.1016/j.jcmgh.2021.08.001>

Stokes, T., Tripp, T. R., Murphy, K., Morton, R. W., Oikawa, S. Y., Lam Choi, H., McGrath, J., McGlory, C., MacDonald, M. J., & **Phillips, S. M.** (2021). Methodological considerations for and validation of the ultrasonographic determination of human skeletal muscle hypertrophy and atrophy. *Physiol Rep*, 9(1), e14683. <https://doi.org/10.14814/phy2.14683>

Surendran, P., Feofanova, E. V., Lahrouchi, N., Ntalla, I., Karthikeyan, S., Cook, J., Chen, L., Mifsud, B., Yao, C., Kraja, A. T., Cartwright, J. H., Hellwege, J. N., Giri, A., Tragante, V., Thorleifsson, G., Liu, D. J., Prins, B. P., Stewart, I. D., Cabrera, C. P., . . . Howson, J. M. M. (2021). Publisher Correction: Discovery of rare variants associated with blood pressure regulation through meta-analysis of 1.3 million individuals. *Nat Genet*, 53(5), 762. <https://doi.org/10.1038/s41588-021-00832-z>

Susan-Resiga, D., Girard, E., Essalmani, R., Roubtsova, A., Marcinkiewicz, J., Derbali, R. M., Evagelidis, A., Byun, J. H., Lebeau, P. F., **Austin, R. C.**, & Seidah, N. G. (2021). Asialoglycoprotein receptor 1 is a novel PCSK9-independent ligand of liver LDLR cleaved by furin. *J Biol Chem*, 297(4), 101177. <https://doi.org/10.1016/j.jbc.2021.101177>

Sushko, K., Wang, Q. R., Tschirhart Menezes, H., Fitzpatrick-Lewis, D., & Sherifali, D. (2021). Patient-Reported Benefits and Limitations of Mobile Health Technologies for Diabetes in Pregnancy: Protocol for a Scoping Review. *JMIR Res Protoc*, 10(10), e29727. <https://doi.org/10.2196/29727>

Svenningsen, S., McIntosh, M., Ouriadov, A., Matheson, A. M., Konyer, N. B., Eddy, R. L., McCormack, D. G., **Noseworthy, M. D.**, Nair, P., & Parraga, G. (2021). Reproducibility of Hyperpolarized (129)Xe MRI Ventilation Defect Percent in Severe Asthma to Evaluate Clinical Trial Feasibility. *Acad Radiol*, 28(6), 817-826. <https://doi.org/10.1016/j.acra.2020.04.025>

Szpunar, M., Driediger, M., Johnson, A. M., Vanderloo, L. M., Burke, S. M., Irwin, J. D., Shelley, J., **Timmons, B. W.**, & Tucker, P. (2021). Impact of the Childcare Physical Activity (PLAY) Policy on Young Children's Physical Activity and Sedentary Time: A Pilot Clustered Randomized Controlled Trial. *Int J Environ Res Public Health*, 18(14). <https://doi.org/10.3390/ijerph18147468>

Szpunar, M., Johnson, A. M., Driediger, M., Burke, S. M., Irwin, J. D., Shelley, J., **Timmons, B. W.**, Vanderloo, L. M., & Tucker, P. (2022). Implementation Adherence and Perspectives of the Childcare Physical Activity (PLAY) Policy: A Process Evaluation. *Health Educ Behav*, 49(1), 66-77. <https://doi.org/10.1177/1090198121996285>

Tang, Y., Shah, H., Bueno Junior, C. R., Sun, X., Mitri, J., Sambataro, M., Sambado, L., **Gerstein, H. C.**, Fonseca, V., Doria, A., & Pop-Busui, R. (2021). Intensive Risk Factor Management and Cardiovascular Autonomic Neuropathy in Type 2 Diabetes: The ACCORD Trial. *Diabetes Care*, 44(1), 164-173. <https://doi.org/10.2337/dc20-1842>

**Tarride, J. E.**, Adachi, J. D., Brown, J. P., Schemitsch, E., Slatkovska, L., & Burke, N. (2021). Incremental costs of fragility fractures: a population-based matched-cohort study from Ontario, Canada. *Osteoporos Int*, 32(9), 1753-1761. <https://doi.org/10.1007/s00198-021-05877-8>

**Tarride, J. E.**, Blackhouse, G., Guindon, G. E., Chaiton, M. O., Planinac, L., & Schwartz, R. (2021). Return on investment of Canadian tobacco control policies implemented between 2001 and 2016. *Tob Control*. <https://doi.org/10.1136/tobaccocontrol-2021-056473>

**Tarride, J. E.**, Doumouras, A. G., Hong, D., Paterson, J. M., Tibebu, S., Nguyen, F., Perez, R., Taylor, V. H., Xie, F., Boudreau, V., Pullenayegum, E., Urbach, D. R., & Anvari, M. (2021). Comparison of 4-Year Health Care Expenditures Associated With Roux-en-Y Gastric Bypass vs Sleeve Gastrectomy. *JAMA Netw Open*, 4(9), e2122079. <https://doi.org/10.1001/jamanetworkopen.2021.22079>

**Tarride, J. E.**, Husain, M., Andersen, A., Gundgaard, J., Luckevich, M., Mark, T., Wagner, L., & Pieber, T. R. (2021). Hospitalization costs with degludec versus glargine U100 for patients with type 2 diabetes at high cardiovascular risk: Canadian costs applied to SAEs from a randomized outcomes trial. *J Med Econ*, 24(1), 1318-1326. <https://doi.org/10.1080/13696998.2021.2003804>

**Tarride, J. E.**, Lauck, S., Natarajan, M. K., Asgar, A. W., Luong, T., & Blackhouse, G. (2021). One-Year Costs Associated with Hospitalizations Due to Aortic Stenosis in Canada. *CJC Open*, 3(1), 82-90. <https://doi.org/10.1016/j.cjco.2020.09.015>

**Tarride, J. E.**, Paterson, J. M., & Anvari, M. (2021). The Need for an Improved Evidence Base to Inform the Health Care Decision-making Process-Reply. *JAMA Surg*, 156(4), 399-400.

<https://doi.org/10.1001/jamasurg.2020.6384>

Teixeira, F. J., Tavares, N., Matias, C. N., & **Phillips, S. M.** (2022). The effects of phosphatidic acid on performance and body composition - a scoping review. *J Sports Sci*, 40(3), 364-369.

<https://doi.org/10.1080/02640414.2021.1994769>

Thomas, P. J., Newell, E. E., Eccles, K., **Holloway, A. C.**, Idowu, I., Xia, Z., Hassan, E., Tomy, G., & Quenneville, C. (2021). Co-exposures to trace elements and polycyclic aromatic compounds (PACs) impacts North American river otter (*Lontra canadensis*) baculum. *Chemosphere*, 265, 128920.

<https://doi.org/10.1016/j.chemosphere.2020.128920>

Thornton, C. S., & **Surette, M. G.** (2021). Potential Contributions of Anaerobes in Cystic Fibrosis Airways. *J Clin Microbiol*, 59(3). <https://doi.org/10.1128/JCM.01813-19>

Townsend, L. K., Weber, A. J., Day, E. A., Shamsoum, H., Shaw, S. J., Perry, C. G. R., Kemp, B. E., **Steinberg, G. R.**, & Wright, D. C. (2021). AMPK mediates energetic stress-induced liver GDF15. *FASEB J*, 35(1), e21218. <https://doi.org/10.1096/fj.202000954R>

Tran, C. L., Selewski, D. T., Oh, G. J., Troost, J. P., Massengill, S. F., Al-Akash, S. I., Mahesh, S., Amin, R., Ashoor, I. F., **Chanchlani, R.**, Kallash, M., Woroniecki, R. P., & Gipson, D. S. (2020). Pediatric Immunization Practices in Nephrotic Syndrome: An Assessment of Provider and Parental Knowledge. *Front Pediatr*, 8, 619548. <https://doi.org/10.3389/fped.2020.619548>

Traylor, D. A., Kamal, M., Nunes, E. A., Prior, T., Gorissen, S. H. M., Lees, M., Gesel, F., Lim, C., & **Phillips, S. M.** (2021). Consumption of High-Leucine-Containing Protein Bar Following Breakfast Impacts Aminoacidemia and Subjective Appetite in Older Persons. *Curr Dev Nutr*, 5(6), nzab080.

<https://doi.org/10.1093/cdn/nzab080>

**Trigatti, B. L.** (2021). Pcp2: A New Partner for the Scavenger Receptor Class B Type I in High-Density Lipoprotein Selective Lipid Uptake. *Arterioscler Thromb Vasc Biol*, 41(11), 2726-2729.

<https://doi.org/10.1161/ATVBAHA.121.316971>

Tsakiridis, E. E., Broadfield, L., Marcinko, K., Biziotis, O. D., Ali, A., Mekhaeil, B., Ahmadi, E., Singh, K., Mesci, A., Zacharidis, P. G., Anagnostopoulos, A. E., Berg, T., Muti, P., **Steinberg, G. R.**, & **Tsakiridis, T.** (2021). Combined metformin-salicylate treatment provides improved anti-tumor activity and enhanced radiotherapy response in prostate cancer; drug synergy at clinically relevant doses. *Transl Oncol*, 14(11), 101209. <https://doi.org/10.1016/j.tranon.2021.101209>

**Tsakiridis, T.**, Pond, G. R., & Wright, J. (2022). Metformin-A Thought-provoking Addition to Anticancer Therapies-Reply. *JAMA Oncol*, 8(2), 303-304. <https://doi.org/10.1001/jamaoncol.2021.6729>

**Tsakiridis, T.**, Pond, G. R., Wright, J., Ellis, P. M., Ahmed, N., Abdulkarim, B., Roa, W., Robinson, A., Swaminath, A., Okawara, G., Wierzbicki, M., Valdes, M., & Levine, M. (2021). Metformin in Combination With Chemoradiotherapy in Locally Advanced Non-Small Cell Lung Cancer: The OCOG-ALMERA Randomized Clinical Trial. *JAMA Oncol*, 7(9), 1333-1341. <https://doi.org/10.1001/jamaoncol.2021.2328>

Tsang, K. K., Maguire, F., Zubyk, H. L., Chou, S., Edalatmand, A., Wright, G. D., Beiko, R. G., & **McArthur, A. G.** (2021). Identifying novel beta-lactamase substrate activity through in silico prediction of antimicrobial resistance. *Microb Genom*, 7(1). <https://doi.org/10.1099/mgen.0.000500>

Tsur, A. M., Hershkovich, S., Zucker, I., Lutski, M., Pinhas-Hamiel, O., Vivante, A., Fischman, M., Amir, O., Rotchild, J., **Gerstein, H. C.**, Cukierman-Yaffe, T., Friedensohn, L., Mosenzon, O., Derazne, E., Tzur, D., Tirosh, A., Afek, A., Raz, I., & Twig, G. (2021). Stuttering and Incident Type 2 Diabetes: A Population-Based Study of 2.2 Million Adolescents. *J Clin Endocrinol Metab*, 106(4), 978-987.

<https://doi.org/10.1210/clinem/dgaa988>

Ulrich, E. H., So, G., Zappitelli, M., & **Chanchlani, R.** (2021). A Review on the Application and Limitations of Administrative Health Care Data for the Study of Acute Kidney Injury Epidemiology and Outcomes in Children. *Front Pediatr*, 9, 742888. <https://doi.org/10.3389/fped.2021.742888>

Van Lieshout, R. J., McGowan, P. O., de Vega, W. C., Savoy, C. D., **Morrison, K. M.**, Saigal, S., Mathewson, K. J., & Schmidt, L. A. (2021). Extremely Low Birth Weight and Accelerated Biological Aging. *Pediatrics*, 147(6). <https://doi.org/10.1542/peds.2020-001230>

Vanderloo, L. M., Maguire, J. L., Keown-Stoneman, C. D. G., Parkin, P. C., Borkhoff, C. M., Tremblay, M. S., **Anderson, L. N.**, Birken, C. S., & Collaboration, T. A. K. (2021). Associations Between Meeting the 24-Hour Movement Guidelines and Cardiometabolic Risk in Young Children. *Pediatr Exerc Sci*, 33(3), 112-119. <https://doi.org/10.1123/pes.2020-0249>

Vann, C. G., Morton, R. W., Mobley, C. B., Vechetti, I. J., Ferguson, B. K., Haun, C. T., Osburn, S. C., Sexton, C. L., Fox, C. D., Romero, M. A., Roberson, P. A., Oikawa, S. Y., McGlory, C., Young, K. C., McCarthy, J. J., **Phillips, S. M.**, & Roberts, M. D. (2021). An intron variant of the GLI family zinc finger 3 (GLI3) gene differentiates resistance training-induced muscle fiber hypertrophy in younger men. *FASEB J*, 35(5), e21587. <https://doi.org/10.1096/fj.202100113RR>

Vanstone, M., Taneja, S., Popoola, A., Panday, J., Greyson, D., Lennox, R., & **McDonald, S. D.** (2021). Reasons for cannabis use during pregnancy and lactation: a qualitative study. *CMAJ*, 193(50), E1906-E1914. <https://doi.org/10.1503/cmaj.211236>

Verschoor, C. P., Lin, D. T. S., Kobor, M. S., Mian, O., Ma, J., **Pare, G.**, & Ybazeta, G. (2021). Epigenetic age is associated with baseline and 3-year change in frailty in the Canadian Longitudinal Study on Aging. *Clin Epigenetics*, 13(1), 163. <https://doi.org/10.1186/s13148-021-01150-1>

Volodarsky, M., Kerkhof, J., Stuart, A., Levy, M., Brady, L. I., **Tarnopolsky, M.**, Lin, H., Ainsworth, P., & Sadikovic, B. (2021). Comprehensive genetic sequence and copy number analysis for Charcot-Marie-Tooth disease in a Canadian cohort of 2517 patients. *J Med Genet*, 58(4), 284-288. <https://doi.org/10.1136/jmedgenet-2019-106641>

Wageh, M., Fortino, S. A., McGlory, C., Kumbhare, D., **Phillips, S. M.**, & Parise, G. (2021). The Effect of a Multi-ingredient Supplement on Resistance Training-induced Adaptations. *Med Sci Sports Exerc*, 53(8), 1699-1707. <https://doi.org/10.1249/MSS.0000000000002641>

**Wahi, G., de Souza, R. J.**, Hartmann, K., Giglia, L., Jack, S. M., & **Anand, S. S.** (2021). Effectiveness of programs aimed at obesity prevention among Indigenous children: A systematic review. *Prev Med Rep*, 22, 101347. <https://doi.org/10.1016/j.pmedr.2021.101347>

Walker, O. S., Gurm, H., Sharma, R., Verma, N., May, L. L., & **Raha, S.** (2021). Delta-9-tetrahydrocannabinol inhibits invasion of HTR8/SVneo human extravillous trophoblast cells and negatively impacts mitochondrial function. *Sci Rep*, 11(1), 4029. <https://doi.org/10.1038/s41598-021-83563-9>

Wang, A., **Gerstein, H. C.**, Lee, S. F., Hess, S., **Pare, G.**, Ryden, L., & Mellbin, L. G. (2021). Testosterone and sex hormone-binding globulin in dysglycemic women at high cardiovascular risk: A report from the Outcome Reduction with an Initial Glargine Intervention trial. *Diab Vasc Dis Res*, 18(2), 14791641211002475. <https://doi.org/10.1177/14791641211002475>

Wang, B., Tsakiridis, E. E., Zhang, S., Llanos, A., Desjardins, E. M., Yabut, J. M., Green, A. E., Day, E. A., Smith, B. K., Lally, J. S. V., Wu, J., Raphenya, A. R., Srinivasan, K. A., **McArthur, A. G.**, Kajimura, S., Patel, J. S., Wade, M. G., **Morrison, K. M.**, **Holloway, A. C.**, & **Steinberg, G. R.** (2021). The pesticide chlorpyrifos promotes obesity by inhibiting diet-induced thermogenesis in brown adipose tissue. *Nat Commun*, 12(1), 5163. <https://doi.org/10.1038/s41467-021-25384-y>

Wang, D., Day, E. A., Townsend, L. K., Djordjevic, D., Jorgensen, S. B., & **Steinberg, G. R.** (2021). GDF15: emerging biology and therapeutic applications for obesity and cardiometabolic disease. *Nat Rev Endocrinol*, 17(10), 592-607. <https://doi.org/10.1038/s41574-021-00529-7>

Wang, L., Aschenbrenner, D., Zeng, Z., Cao, X., Mayr, D., Mehta, M., Capitani, M., Warner, N., Pan, J., Wang, L., Li, Q., Zuo, T., Cohen-Kedar, S., Lu, J., Ardy, R. C., Mulder, D. J., Dissanayake, D., Peng, K., Huang, Z., **Surette, M.G.**, . . . Muise, A. M. (2021). Gain-of-function variants in SYK cause immune dysregulation and systemic inflammation in humans and mice. *Nat Genet*, 53(4), 500-510. <https://doi.org/10.1038/s41588-021-00803-4>

Weiman, D. I., Mahmud, F. H., Clarke, A. B. M., Assor, E., McDonald, C., Saibil, F., Lochnan, H. A., **Punthakee, Z.**, Marcon, M. A., & Group, C.-D. S. (2021). Impact of a Gluten-Free Diet on Quality of Life and Health Perception in Patients With Type 1 Diabetes and Asymptomatic Celiac Disease. *J Clin Endocrinol Metab*, 106(5), e1984-e1992. <https://doi.org/10.1210/clinem/dgaa977>

White, J., Rowan-Legg, A., Writer, H., **Chanchlani, R.**, & Gupta, R. (2020). Procedural skill needs for Canadian paediatricians: A national profile. *Paediatrics & Child Health*, 26(6), e265–e271. <https://doi.org/10.1093/pch/pxaa103>



Wijkman, M. O., Claggett, B. L., Pfeffer, M. A., **Pare, G.**, McQueen, M., Hess, S., Lee, S. F., & **Gerstein, H. C.** (2021). NT-proBNP versus routine clinical risk factors as a predictor of cardiovascular events or death in people with dysglycemia - A brief report from the ORIGIN trial. *J Diabetes Complications*, 35(7), 107928. <https://doi.org/10.1016/j.jdiacomp.2021.107928>

Willis, C. R. G., Gallagher, I. J., Wilkinson, D. J., Brook, M. S., Bass, J. J., Phillips, B. E., Smith, K., Etheridge, T., Stokes, T., McGlory, C., Gorissen, S. H. M., Szewczyk, N. J., **Phillips, S. M.**, & Atherton, P. J. (2021). Transcriptomic links to muscle mass loss and declines in cumulative muscle protein synthesis during short-term disuse in healthy younger humans. *FASEB J*, 35(9), e21830. <https://doi.org/10.1096/fj.202100276RR>

Wonkam, A., Lebeko, K., Mowla, S., Noubiap, J. J., Chong, M., & **Pare, G.** (2021). Whole exome sequencing reveals a biallelic frameshift mutation in GRXCR2 in hearing impairment in Cameroon. *Mol Genet Genomic Med*, 9(3), e1609. <https://doi.org/10.1002/mgg3.1609>

Wu, H., Forgetta, V., Zhou, S., Bhatnagar, S. R., **Pare, G.**, & Richards, J. B. (2021). Polygenic Risk Score for Low-Density Lipoprotein Cholesterol Is Associated With Risk of Ischemic Heart Disease and Enriches for Individuals With Familial Hypercholesterolemia. *Circ Genom Precis Med*, 14(1), e003106. <https://doi.org/10.1161/CIRCGEN.120.003106>

Xiong, J. S., Reedman, S. E., Kho, M. E., **Timmons, B. W.**, Verschuren, O., & Gorter, J. W. (2021). Operationalization, measurement, and health indicators of sedentary behavior in individuals with cerebral palsy: a scoping review. *Disabil Rehabil*, 1-12. <https://doi.org/10.1080/09638288.2021.1949050>

Xiong, T., Qian, A. S., & **Trigatti, B.L.** (2021). The local effects of proprotein convertase subtilisin/kexin type 9 (PCSK9) on the inflammatory atheroma: beyond LDL cholesterol lowering. *Vessel Plus*, (5)5. <https://doi.org/10.20517/2574-1209.2020.60>

Xu, Y., Siegal, D. M., & **Anand, S. S.** (2021). Ethnoracial variations in venous thrombosis: Implications for management, and a call to action. *J Thromb Haemost*, 19(1), 30-40. <https://doi.org/10.1111/jth.15140>

Yamamoto, M., Shanmuganathan, M., Hart, L., **Pai, N.**, & Britz-McKibbin, P. (2021). Urinary Metabolites Enable Differential Diagnosis and Therapeutic Monitoring of Pediatric Inflammatory Bowel Disease. *Metabolites*, 11(4). <https://doi.org/10.3390/metabo11040245>

Yap, Z. Y., Strucinska, K., Matsuzaki, S., Lee, S., Si, Y., Humphries, K., **Tarnopolsky, M. A.**, & Yoon, W. H. (2021). A biallelic pathogenic variant in the OGDH gene results in a neurological disorder with features of a mitochondrial disease. *J Inherit Metab Dis*, 44(2), 388-400. <https://doi.org/10.1002/jimd.12248>

Yeung, R. O., Al Jundi, M., Gubbi, S., Bompou, M. E., Sirrs, S., **Tarnopolsky, M.**, & Hannah-Shmouni, F. (2021). Management of mitochondrial diabetes in the era of novel therapies. *J Diabetes Complications*, 35(1), 107584. <https://doi.org/10.1016/j.jdiacomp.2020.107584>

Yeung, S., Rosenberg, M., Banach, D., Mayotte, L., **Anand, S. S.**, La Ronge Indian Band, L., McKay First Nation, F., & Castleden, H. (2021). Bonding social capital and health within four First Nations communities in Canada: A cross-sectional study. *SSM Popul Health*, 16, 100962.

<https://doi.org/10.1016/j.ssmph.2021.100962>

Yoneda, N., Isayama, T., Saito, S., Shah, P. S., Santaguida, P., Nakamura, T., & **McDonald, S. D.** (2021). Learning From Strengths: Improving Care by Comparing Perinatal Approaches Between Japan and Canada and Identifying Future Research Priorities. *J Obstet Gynaecol Can*, 43(12), 1388-1394 e1381.

<https://doi.org/10.1016/j.jogc.2021.04.018>

Yoo, S. M., Lau, V. W. C., Aarts, C., Bojovic, B., **Steinberg, G.**, Hammill, J. A., Dvorkin-Gheva, A., Ghosh, R., & Bramson, J. L. (2021). Manufacturing T cells in hollow fiber membrane bioreactors changes their programming and enhances their potency. *Oncoimmunology*, 10(1), 1995168.

<https://doi.org/10.1080/2162402X.2021.1995168>

Yoshida-Montezuma, Y., Keown-Stoneman, C. D. G., Wanigaratne, S., Li, X., Vanderhout, S. M., Borkhoff, C. M., Birken, C. S., Maguire, J. L., & **Anderson, L. N.** (2021). The social determinants of health as predictors of adherence to public health preventive measures among parents and young children during the COVID-19 pandemic: a longitudinal cohort study. *Can J Public Health*, 112(4), 552-565.

<https://doi.org/10.17269/s41997-021-00540-5>

Yoshida-Montezuma, Y., Stone, E., Iftikhar, S., De Rubeis, V., Andreacchi, A. T., Keown-Stoneman, C., Mbuagbaw, L., Brown, H. K., de Souza, R. J., & **Anderson, L. N.** (2022). The association between late preterm birth and cardiometabolic conditions across the life course: A systematic review and meta-analysis. *Paediatr Perinat Epidemiol*, 36(2), 264-275. <https://doi.org/10.1111/ppe.12831>

Young, L. V., Morrison, W., Campbell, C., Moore, E. C., Arsenault, M. G., Dial, A. G., Ng, S., Bellissimo, C. A., Perry, C. G. R., **Ljubicic, V.**, & Johnston, A. P. (2021). Loss of dystrophin expression in skeletal muscle is associated with senescence of macrophages and endothelial cells. *Am J Physiol Cell Physiol*, 321(1), C94-C103. <https://doi.org/10.1152/ajpcell.00397.2020>

Yu, Z. M., Van Blyderveen, S., Schmidt, L., Lu, C., Vanstone, M., Biringer, A., Sword, W., Beyene, J., & **McDonald, S. D.** (2021). Predictors of Gestational Weight Gain Examined As a Continuous Outcome: A Prospective Analysis. *J Womens Health (Larchmt)*, 30(7), 1006-1015.

<https://doi.org/10.1089/jwh.2020.8799>

Zafarmand, M. H., Goossens, S., Tajik, P., Bossuyt, P. M. M., Asztalos, E. V., Gardener, G. J., Willan, A. R., Roumen, F., Mol, B. W., Barrett, Y. J., & Twin Birth Study Collaborative, G. (2021). Planned Cesarean or planned vaginal delivery for twins: secondary analysis of randomized controlled trial. *Ultrasound Obstet Gynecol*, 57(4), 582-591. <https://doi.org/10.1002/uog.21907u>

Zahn, K., Ibrahim, Q., Ball, G. D. C., Buchholz, A., Hamilton, J., Ho, J., Laberge, A. M., Legault, L., Tremblay, M. S., Zenlea, I., Thabane, L., Chanoine, J. P., & **Morrison, K. M.** (2021). Variability in How Canadian Pediatric Weight Management Clinics Deliver Care: Evidence from the CANadian Pediatric Weight Management Registry. *Child Obes*, 17(6), 420-426. <https://doi.org/10.1089/chi.2021.0011>

Zen, M., Marschner, S., Szczeklik, W., Roshanov, P. S., Alahakoon, T. I., Chow, C., Devereaux, P. J., **McDonald, S. D.**, & Lee, V. W. (2021). Association of Preeclampsia With Myocardial Injury Among Patients Undergoing Noncardiac Surgery: The PREECLAMPSIA-VISION Study. *Can J Cardiol*, 37(12), 1934-1941. <https://doi.org/10.1016/j.cjca.2021.06.012>

Zeraatkar, D., Bhasin, A., Morassut, R. E., Churchill, I., Gupta, A., Lawson, D. O., Miroshnychenko, A., Sirotych, E., Aryal, K., Mikhail, D., Khan, T. A., Ha, V., Sievenpiper, J. L., Hanna, S. E., Beyene, J., & de **Souza, R. J.** (2021). Characteristics and quality of systematic reviews and meta-analyses of observational nutritional epidemiology: a cross-sectional study. *Am J Clin Nutr*, 113(6), 1578-1592. <https://doi.org/10.1093/ajcn/nqab002>